

APP CRS	Rwy Idg	11500
011°	TDZE	312
	Apt Elev	312

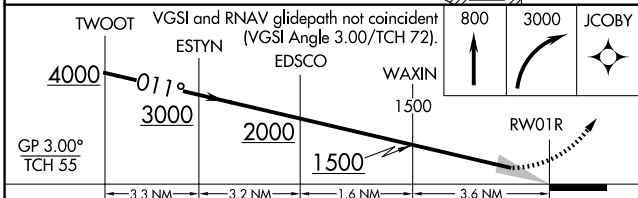
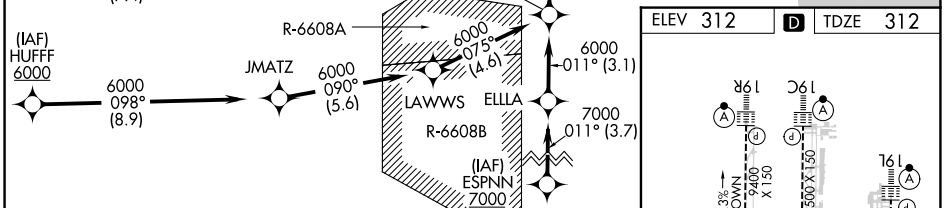
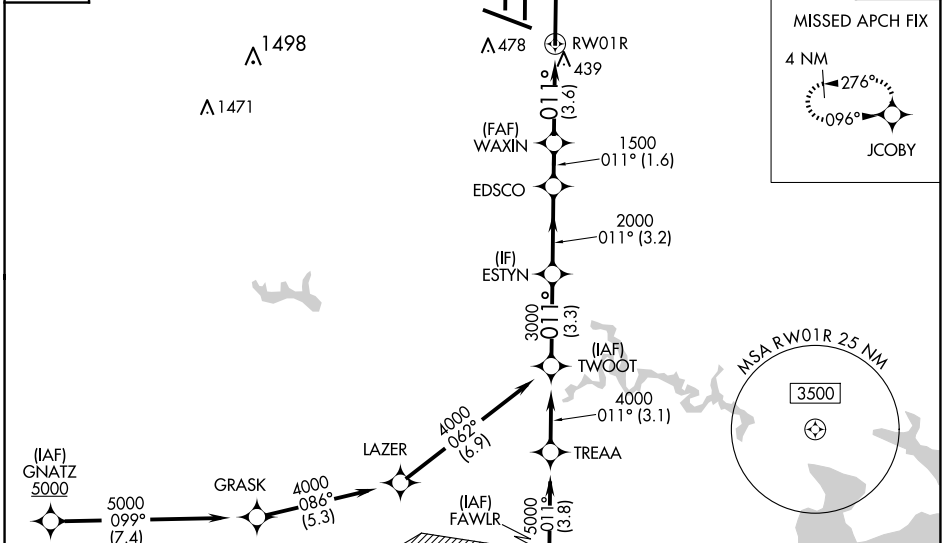
RNAV (RNP) Z RWY 1R

WASHINGTON DULLES INTL (IAD)

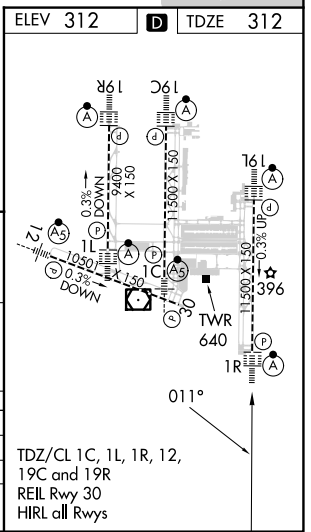
RNP AR APCH - GPS.	ALSF-2	MISSED APPROACH: Climb to 800 then climbing right turn to 3000 direct JCOBY and hold.
<p>▼ For uncompensated Baro-VNAV systems, procedure NA below -13°C or above 54°C.</p> <p>For inop ALS, increase RNP 0.11 all Cats visibility to RVR 4500.</p> <p>Simultaneous approach authorized.</p>		

POTOMAC APP CON	DULLES TOWER	GND CON	CLNC DEL
120.45 306.925 (241°-330°)	120.1 317.8 (Rwy 1R/19L)	121.9 317.8 (EAST)	135.7 317.8
128.525 306.925 (091°-240°)	120.25 348.6 (Rwy 1C/19C)	121.625 348.6 (WEST)	
126.1 338.25 (331°-090°)	134.425 348.6 (Rwys 1L/19R and 12/30)		

D-ATIS	CPDLC
134.85	



CATEGORY	A	B	C	D
RNP 0.11 DA		625/24	313 (400-½)	
RNP 0.30 DA		770/45	458 (500-¾)	



AUTHORIZATION REQUIRED

TDZ/CL 1C, 1L, 1R, 12, 19C and 19R
REIL Rwy 30
HIRL all Rwys