

WAAS CH 86709 W19D	APP CRS 191°	Rwy Idg TDZE 278 Apt Elev 312	9400
--	------------------------	---	-------------

RNAV (GPS) Y RWY 19R

WASHINGTON DULLES INTL (IAD)

RNP APCH - GPS.

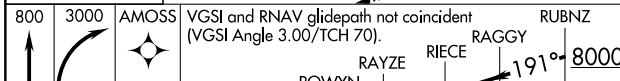
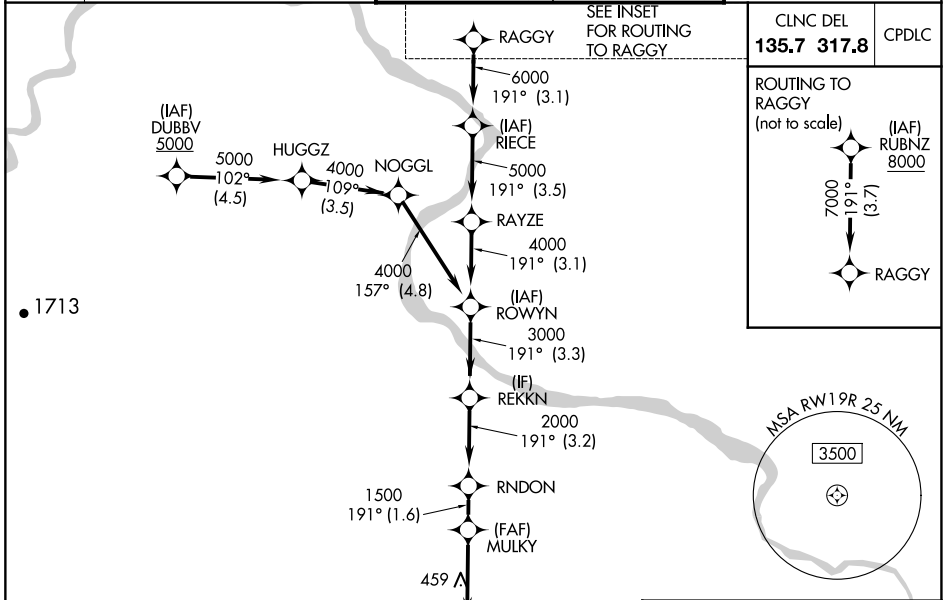
For uncompensated Baro-VNAV systems, LNAV/VNAV NA below -13°C or above 54°C. Simultaneous approach authorized. LNAV procedure NA during simultaneous operations. Use of FD or AP required during simultaneous operations.

ALSf-2



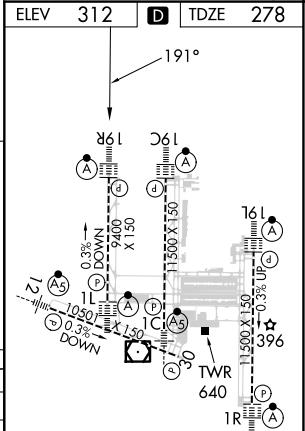
MISSED APPROACH: Climb to 800 then climbing right turn to 3000 direct AMOSS and hold.

D-ATIS 134.85	POTOMAC APP CON 120.45 306.925 (241°-330°) 128.525 306.925 (091°-240°) 126.1 338.25 (331°-090°)	DULLES TOWER 120.1 317.8 (Rwy 1R/19L) 120.25 348.6 (Rwy 1C/19C) 134.425 348.6 (Rwy 1L/19R and 12/30)	GND CON 121.9 317.8 (EAST) 121.625 348.6 (WEST)
-------------------------	---	--	---



800	3000	AMOSS	VGSi and RNAV glidepath not coincident (VGSi Angle 3.00/TCH 70).				RUBNZ	8000
MULKY	MULKY	MULKY	RNDON	RAYZE	RIECE	RAGGY		
1.2	2.5	1.500	2000	4000	5000	6000	7000	
1.2	2.5	1.6	3.2	3.1	3.5	3.1	3.7	

CATEGORY	A	B	C	D
LPV DA		478/18	200 (200-1/2)	
LNAV/VNAV DA		708/40	430 (400-3/4)	
LNAV MDA	720/24	442 (500-1/2)	720/45	442 (500-3/4)
CIRCLING	940-1	628 (700-1)	940-1 3/4 628 (700-1 3/4)	1180-2 3/4 868 (900-2 3/4)



TDZ/CL Rwy 1C, 1L, 1R, 12, 19C and 19R
REIL Rwy 30
HIRL all Rwy

NE-3, 20 MAR 2025 to 17 APR 2025