

WAAS CH <b>97509</b> <b>W01B</b>	APP CRS <b>011°</b>	Rwy ldg <b>11500</b> TDZE <b>286</b> Apt Elev <b>312</b>
--	------------------------	--

# RNAV (GPS) Y RWY 1C

WASHINGTON DULLES INTL (IAD)

RNP APCH - GPS.

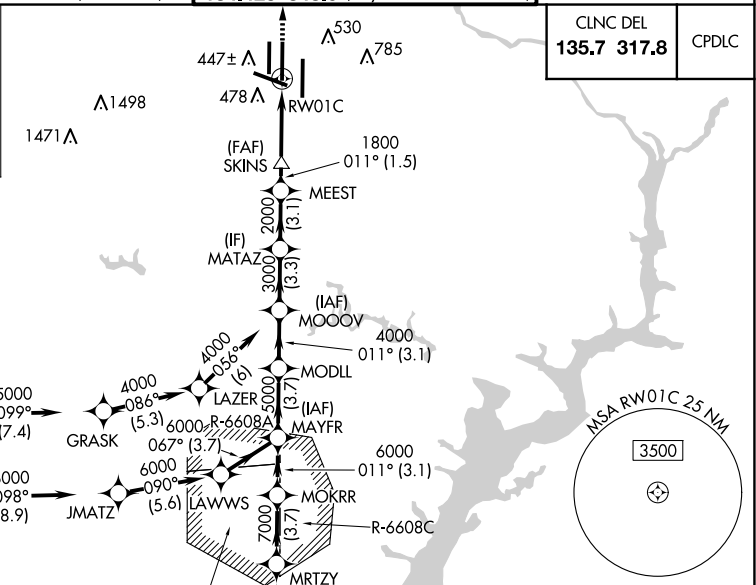
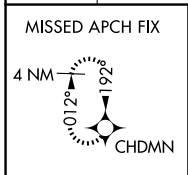
**⚠** For uncompensated Baro-VNAV systems, LNAV/VNAV NA below -13°C or above 54°C.  
**⚠** Use of FD or AP required during simultaneous operations. LNAV procedure NA during simultaneous operations. Simultaneous approach authorized. For inop ALS, increase LNAV/VNAV all Cats visibility to 1½ SM. Increase LNAV Cat C/D visibility to 1¼ SM.

MALSR

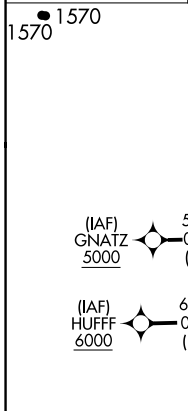


**MISSED APPROACH:**  
Climb to 4000 direct CHDMN and hold, continue climb-in-hold to 4000.

D-ATIS <b>134.85</b>	POTOMAC APP CON <b>120.45 306.925</b> (241°-330°) <b>128.525 306.925</b> (091°-240°) <b>126.1 338.25</b> (331°-090°)	DULLES TOWER <b>120.1 317.8</b> (Rwy 1R/19L) <b>120.25 348.6</b> (Rwy 1C/19C) <b>134.425 348.6</b> (Rwys 1L/19R and 12/30)	GND CON <b>121.9 317.8</b> (EAST) <b>121.625 348.6</b> (WEST)
-------------------------	---	---	---



CLNC DEL <b>135.7 317.8</b>	CPDLC
--------------------------------	-------

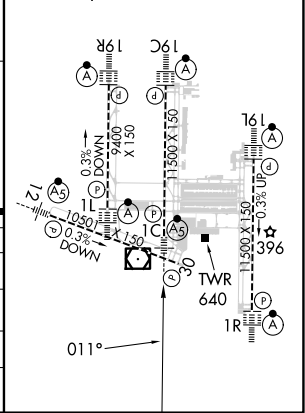


ELEV 312	<b>D</b>	TDZE 286
----------	----------	----------

TDZ/CL Rwys 1C, 1L, 1R, 12, 19C, and 19R  
 REIL Rwy 30  
 HIRL all Rwys

VGSI and RNAV glidepath not coincident (VGSI Angle 3.00/TCH 70).

MUDDO	MRTZY	MOKRR	MAYFR	MODLL	MOOOV	MATAZ	MEEST	SKINS	RWY 1C
9000	8000	7000	6000	5000	4000	3000	2000	1800	1800
GP 3.00°									
TCH 54									
	4.9 NM	3.7 NM	3.1 NM	3.7 NM	3.1 NM	3.3 NM	3.1 NM	1.5 NM	2.9 NM
CATEGORY	A			B			C		D
LPV DA	486/18			200 (200-½)					
LNAV/VNAV DA	801/55			515 (500-1¼)					
LNAV MDA	900/24		614 (600-½)		900-1¾		614 (600-1¾)		
CIRCLING	940-1		628 (700-1)		940-1¾		1180-2¾		
					628 (700-1¾)		868 (900-2¾)		



NE-3, 20 MAR 2025 to 17 APR 2025

NE-3, 20 MAR 2025 to 17 APR 2025