

WAAS CH 99309 W01D	APP CRS 011°	Rwy ldg 9400 TDZE 296 Apt Elev 312
--	------------------------	---

RNAV (GPS) Y RWY 1L

WASHINGTON DULLES INTL (IAD)

RNP APCH - GPS.

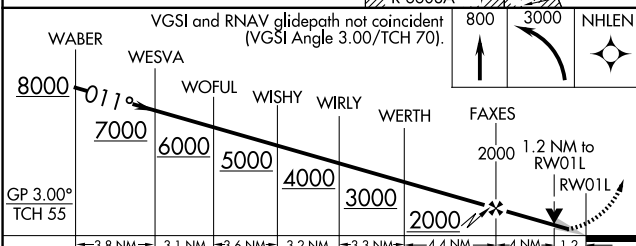
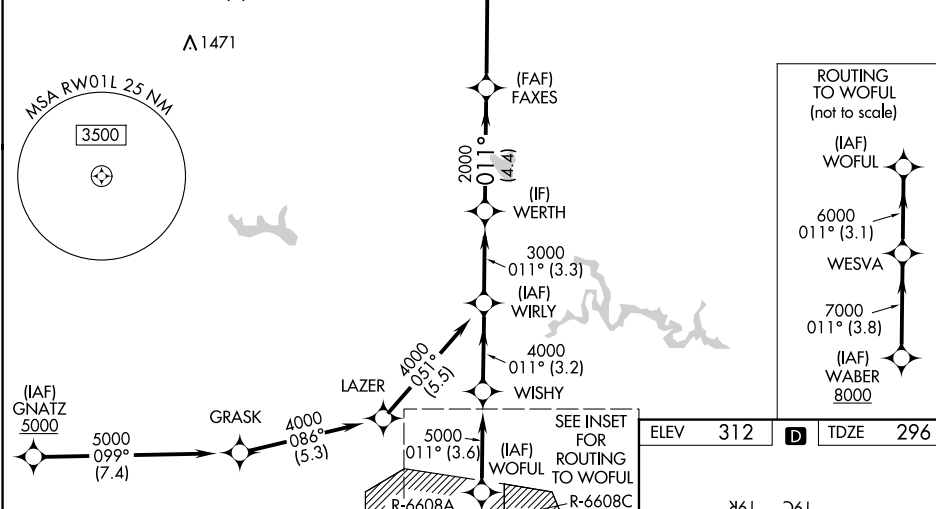
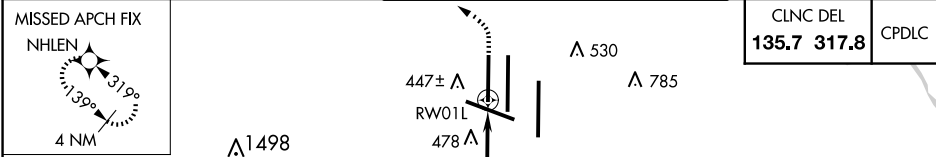
▼ For uncompensated Baro-VNAV systems, LNAV/VNAV NA below -13°C or above 54°C. Use of FD or AP required during simultaneous operations. LNAV procedure NA during simultaneous operations. Simultaneous approach authorized. For inop ALS, increase LNAV/VNAV all Cats visibility to RVR 5500. Increase LNAV Cat C/D visibility to 1 3/8 SM.

ALSF-2



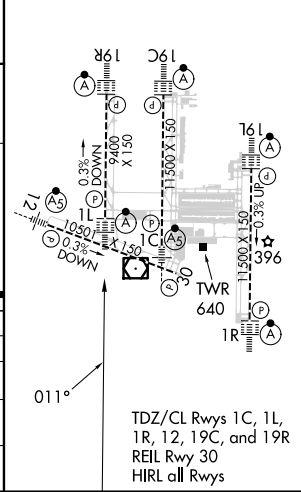
MISSED APPROACH: Climb to 800 then climbing left turn to 3000 direct NHLEN and hold.

D-ATIS 134.85	POTOMAC APP CON 120.45 306.925 (241°-330°) 128.525 306.925 (091°-240°) 126.1 338.25 (331°-090°)	DULLES TOWER 120.1 317.8 (Rwy 1R/19L) 120.25 348.6 (Rwy 1C/19C) 134.425 348.6 (Rwys 1L/19R and 12/30)	GND CON 121.9 317.8 (EAST) 121.625 348.6 (WEST)
-------------------------	---	---	---



WABER	8000	011°	WESVA	7000	WOFUL	6000	WISHY	5000	WIRLY	4000	WERTH	3000	FAXES	2000	1.2 NM to RWY 1L	NHLEN	800	3000	
GP 3.00° TCH 55																			
		-3.8 NM		-3.1 NM		-3.6 NM		-3.2 NM		-3.3 NM		-4.4 NM		-4 NM		1.2			
CATEGORY	A		B				C				D								
LPV DA			496/18				200 (200-1/2)												
LNAV/VNAV DA			658/35				362 (400-3/8)												
LNAV MDA	760/24		464 (500-1/2)				760/50				464 (500-1)								
CIRCLING	940-1		628 (700-1)				940-1 3/4				1180-2 3/4		628 (700-1 3/4)		868 (900-2 3/4)				

ELEV	312	TDZE	296
------	-----	------	-----



NE-3, 20 MAR 2025 to 17 APR 2025

NE-3, 20 MAR 2025 to 17 APR 2025