

APP CRS	Rwy Idg	<b>10501</b>
<b>301°</b>	TDZE	<b>288</b>
	Apt Elev	<b>312</b>

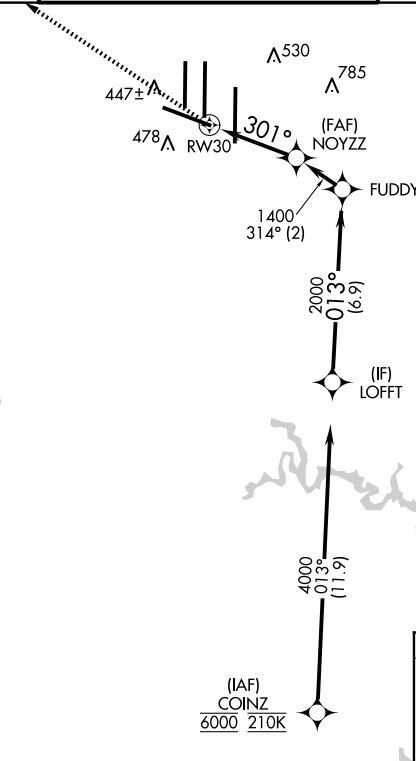
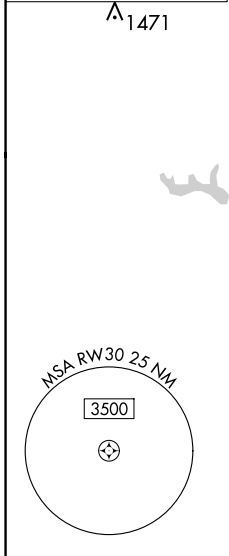
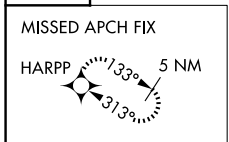
# RNAV (GPS) Y RWY 30

WASHINGTON DULLES INTL (IAD)

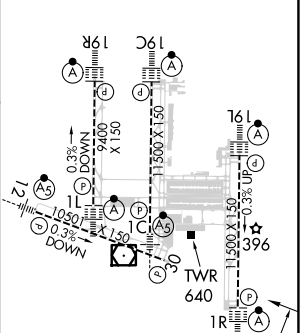
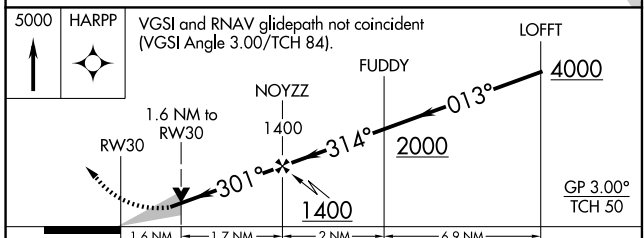
RNP APCH - GPS.	MISSED APPROACH: Climb to 5000 direct HARPP and hold.		
<p>▼ For uncompensated Baro-VNAV systems, LNAV/VNAV NA below -1.3°C or above 54°C.</p> <p>▲ POTOMAC APP CON</p> <p><b>120.45 306.925</b> (241°-330°)</p> <p><b>128.525 306.925</b> (091°-240°)</p> <p><b>126.1 338.25</b> (331°-090°)</p>	<p>DULLES TOWER</p> <p><b>120.1 317.8</b> (Rwy 1R/19L)</p> <p><b>120.25 348.6</b> (Rwy 1C/19C)</p> <p><b>134.425 348.6</b> (Rwys 1L/19R and 12/30)</p>	<p>GND CON</p> <p><b>121.9 317.8</b> (EAST)</p> <p><b>121.625 348.6</b> (WEST)</p>	<p>CLNC DEL</p> <p><b>135.7 317.8</b></p>

D-ATIS  
**134.85**

CPDLC



ELEV 312	<b>D</b>	TDZE 288
----------	----------	----------



CATEGORY	A	B	C	D
LNAV/VNAV DA	801-1 $\frac{3}{8}$		513 (500-1 $\frac{3}{8}$ )	
LNAV MDA	900/55	612 (600-1)	900-1 $\frac{3}{4}$	612 (600-1 $\frac{3}{4}$ )
CIRCLING	940-1	628 (700-1)	940-1 $\frac{3}{4}$ 628 (700-1 $\frac{3}{4}$ )	1180-2 $\frac{3}{4}$ 868 (900-2 $\frac{3}{4}$ )

TDZ/CL 1C, 1L, 1R, 12, 19C and 19R  
REIL Rwy 30  
HIRL all Rwys

NE-3, 20 MAR 2025 to 17 APR 2025

NE-3, 20 MAR 2025 to 17 APR 2025