

SCRAM SIX DEPARTURE (RNAV)

TOP ALTITUDE:
3000

P-56B



P-56A



DEPARTURE ROUTE DESCRIPTION

TAKEOFF RWY 1L/C/R, 19L/C/R, 30: Climb on heading assigned by ATC, expect RADAR vectors to POOCH, then on track 240° to SCRAM, thence. . .

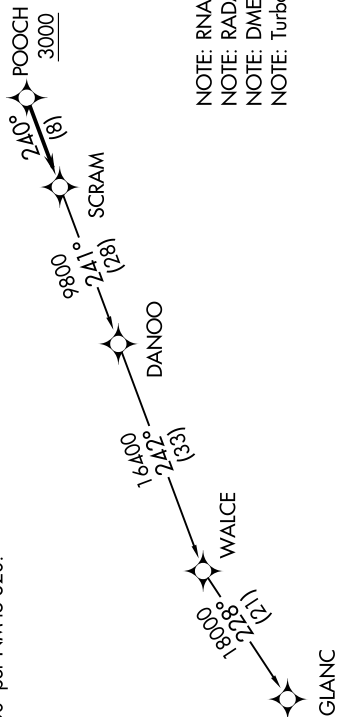
. . . .as depicted. Maintain 3000. Expect clearance to filed altitude within ten (10) minutes after departure.

GLANC TRANSITION (SCRAM6.GLANC):

- D-ATIS 134.85
- CLNC DEL 135.7 317.8
- CPDLC
- GND CON 121.9 317.8 (EAST)
- 121.625 348.6 (WEST)
- DULLES TOWER 120.1 317.8 (Rwy 1R/19L)
- 120.25 348.6 (Rwy 1C/19C)
- 134.425 348.6 (Rwys 1L/19R, 12/30)
- POTOMAC DEP CON 126.65 350.2

TAKEOFF MINIMUMS:

Rwys 1L/C/R, 19L/C/R, 30:
Standard with a minimum climb of 500' per NM to 820.



- NOTE: RNAV 1.
- NOTE: RADAR required.
- NOTE: DME/DME/IRU or GPS required.
- NOTE: Turbo-jets only.

NOTE: Chart not to scale.