

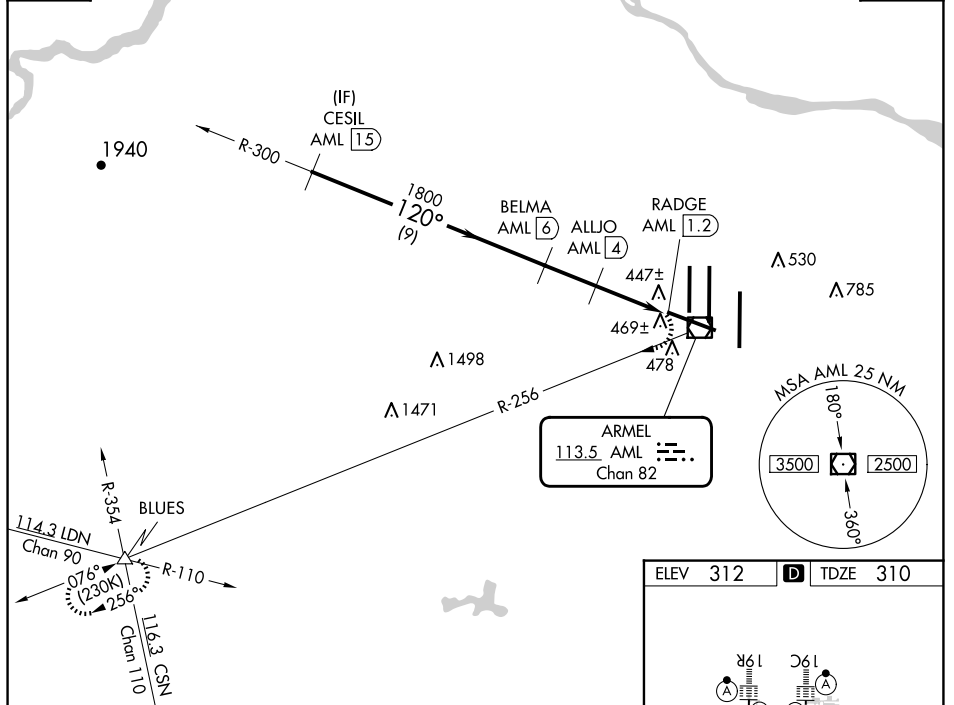
VOR/DME AML 113.5 Chan 82	APP CRS 120°	Rwy Idg TDZE Apt Elev	10501 310 312
---	------------------------	-----------------------------	--

VOR/DME RWY 12

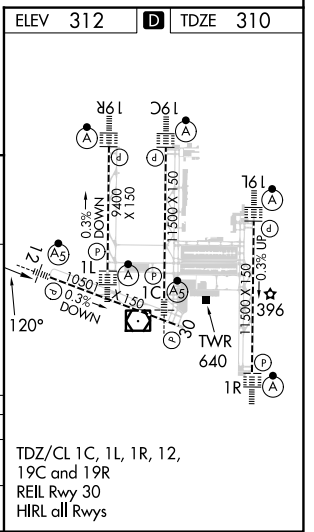
WASHINGTON DULLES INTL (IAD)

▼ ▲	MALSR	MISSED APPROACH: Climbing right turn to 4000 on AML VOR/DME R-256 to BLUES INT and hold.
	POTOMAC APP CON 120.45 306.925 (241°-330°) 128.525 306.925 (091°-240°) 126.1 338.25 (331°-090°)	DULLES TOWER 120.1 317.8 (Rwy 1R/19L) 120.25 348.6 (Rwy 1C/19C) 134.425 348.6 (Rwys 1L/19R and 12/30)
CLNC DEL 135.7 317.8		

D-ATIS 134.85	RADAR REQUIRED	CPDLC
-------------------------	-----------------------	-------



	CESIL AML 15	BELMA AML 6	ALLJO AML 4	RADGE AML 1.2	4000	AML R-256	BLUES ▲
	1800	1200	2.82° TCH 66	2.4	120°		
	9 NM	2 NM	1.7 NM	1.2			
CATEGORY	A	B	C	D			
S-12	740/24	430 (500-½)	740/40	430 (500-¾)			
CIRCLING	940-1	628 (700-1)	940-1¾ 628 (700-1¾)	1180-2¾ 868 (900-2¾)			



NE-3, 20 MAR 2025 to 17 APR 2025

NE-3, 20 MAR 2025 to 17 APR 2025