

WAAS CH 49232 W02A	APP CRS 017°	Rwy Idg TDZE Apt Elev	6000 444 444
--	------------------------	-----------------------------	---

RNAV (GPS) RWY 2

BREMERTON NTL (PWT)

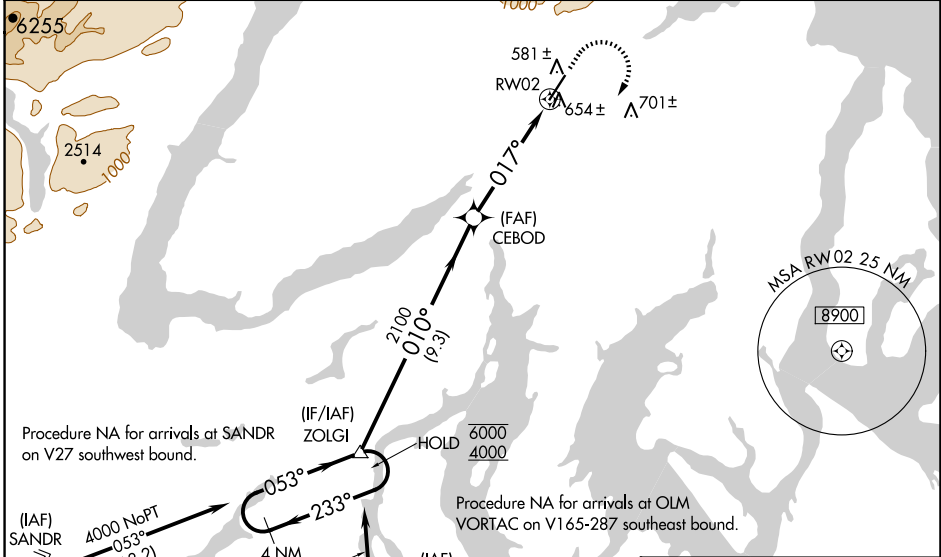
RNP APCH - GPS.



Circling NA for Cats C and D west of Rwy 2-20.
Rwy 2 helicopter visibility reduction below 3/4 SM NA.
For uncompensated BARO-VNAV systems, LNAV/VNAV NA below -15°C above 54°C.

MISSED APPROACH: Climb to 1200 then climbing right turn to 4000 direct ZOLGI and hold, continue climb-in-hold to 4000.

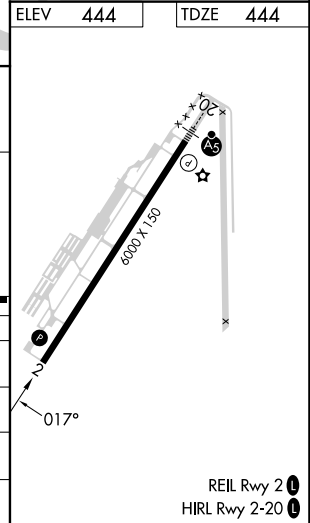
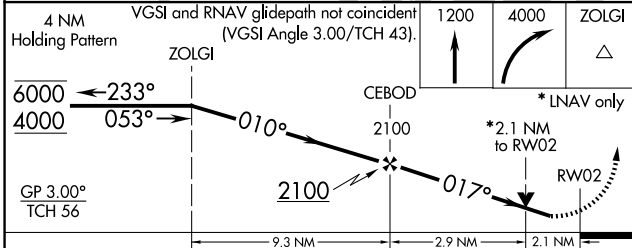
AWOS-3PT 121.2	SEATTLE APP CON 120.1 254.4 269.125	CLNC DEL 127.1	UNICOM 123.05 (CTAF) 0
--------------------------	---	--------------------------	----------------------------------



NW-1, 20 MAR 2025 to 17 APR 2025

NW-1, 20 MAR 2025 to 17 APR 2025

ELEV 444	TDZE 444
-----------------	-----------------



CATEGORY	A	B	C	D
LPV DA	772-1 328 (400-1)			
LNAV/VNAV DA	913-1½ 469 (500-1½)			
LNAV MDA	1160-1	716 (800-1)	1160-2	716 (800-2)
C CIRCLING	1160-1	716 (800-1)	1160-2 716 (800-2)	1240-2½ 796 (800-2½)