

WAAS CH <b>61106</b> <b>W20A</b>	APP CRS <b>197°</b>	Rwy Idg TDZE <b>442</b> Apt Elev <b>444</b>
--	------------------------	---

# RNAV (GPS) RWY 20

BREMERTON NTL (PWT)

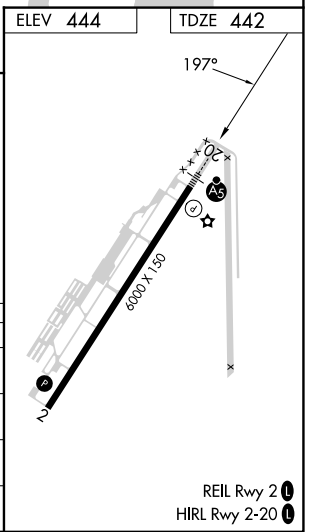
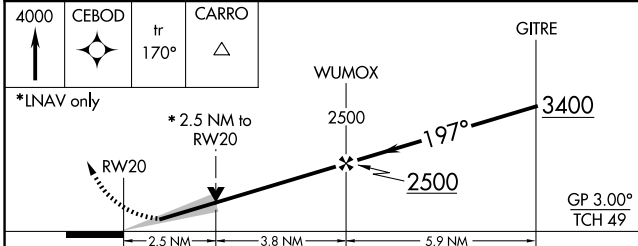
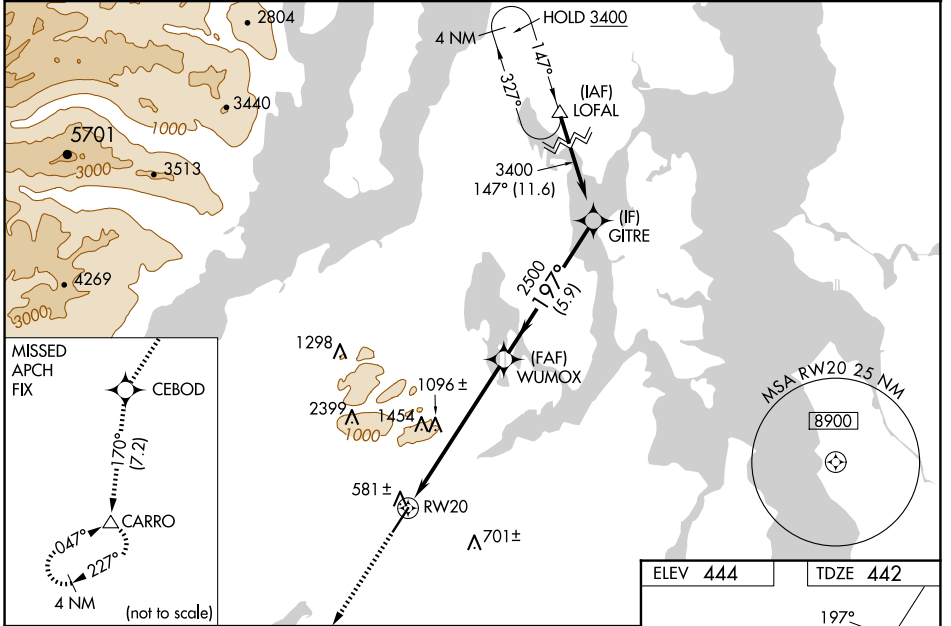
**RNP APCH.**

**⚠** Circling NA for Cats C and D west of Rwy 2-20. For uncompensated Baro-VNAV systems, LNAV/VNAV NA below -15°C or above 54°C. Baro-VNAV and VDP NA when using Seattle-Tacoma Intl altimeter setting. When local altimeter setting not received, use Seattle-Tacoma Intl altimeter setting and increase all DA 45 feet and all MDA 60 feet; increase LNAV Cat A and increase Circling Cats C/D visibility ½ SM. Inop table does not apply to LNAV/VNAV all Cats.

**MALSR**

**MISSED APPROACH:**  
Climb to 4000 direct CEBOD and on track 170° to CARRO and hold, continue climb-in-hold to 4000.

AWOS-3PT <b>121.2</b>	SEATTLE APP CON <b>120.1 254.4 269.125</b>	CLNC DEL <b>127.1</b>	UNICOM <b>123.05 (CTAF) 0</b>
--------------------------	---	--------------------------	----------------------------------



CATEGORY	A	B	C	D
LPV DA	642-½ 200 (200-½)			
LNAV/VNAV DA	1396-4 954 (1000-4)			
LNAV MDA	1300-½ 858 (900-½)	1300-¾ 858 (900-¾)	1300-2	858 (900-2)
<b>C</b> CIRCLING	1300-1¼	856 (900-1¼)	1300-2½ 856 (900-2½)	1300-2¾ 856 (900-2¾)

NW-1, 20 MAR 2025 to 17 APR 2025

NW-1, 20 MAR 2025 to 17 APR 2025