

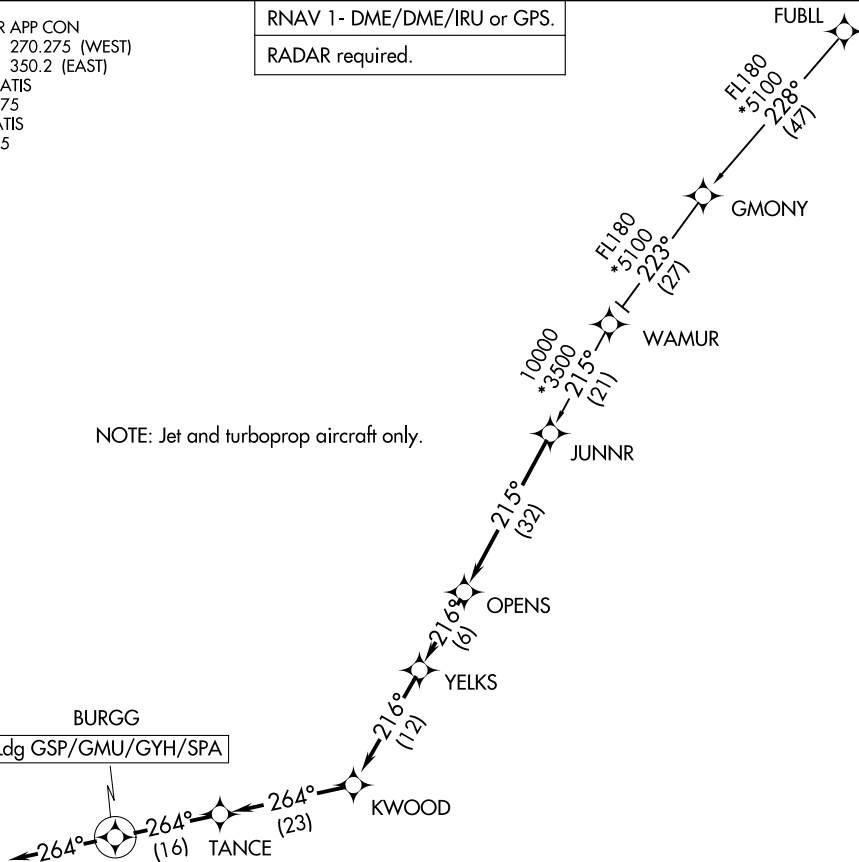
JUNNR FOUR ARRIVAL (RNAV)

GREER, SOUTH CAROLINA

GREER APP CON
 118.8 270.275 (WEST)
 119.4 350.2 (EAST)
 GMU ATIS
 127.075
 GSP ATIS
 134.25

RNAV 1 - DME/DME/IRU or GPS.
RADAR required.

NOTE: Jet and turboprop aircraft only.



SPARTANBURG DOWNTOWN
MEML/SIMPSON FLD

GREENVILLE SPARTANBURG INTL

GREENVILLE DOWNTOWN

DONALDSON FLD

NOTE: Chart not to scale.

ARRIVAL ROUTE DESCRIPTION

FUBLL TRANSITION (FUBLL.JUNNR4)

LANDING ALL AIRPORTS: From JUNNR on track 215° to OPENS, then on track 216° to YELKS, then on track 216° to KWOOD, then on track 264° to TANCE, then on track 264° to BURGG, then on heading 264°. Expect RADAR vectors to final approach course.