

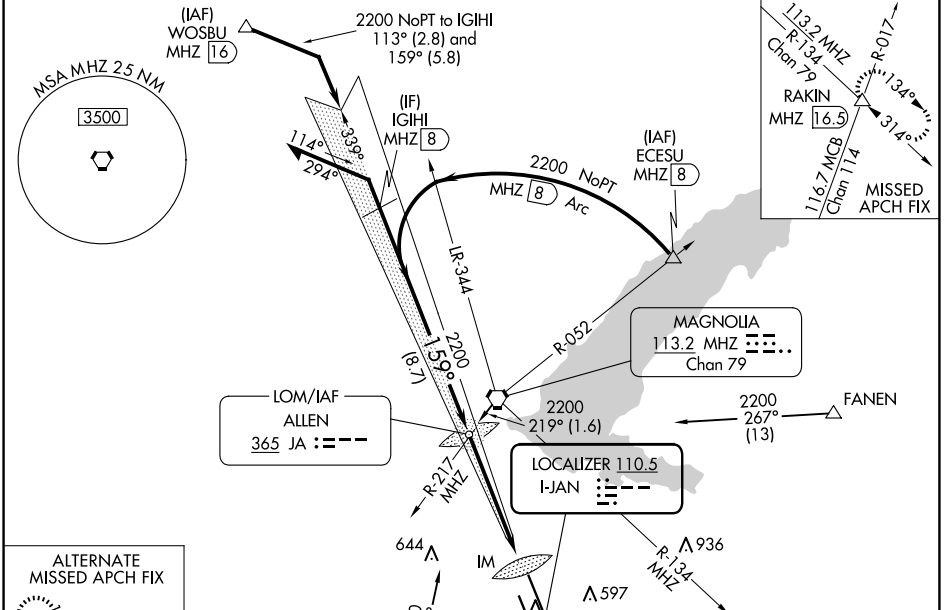
LOC I-JAN <b>110.5</b>	APP CRS <b>159°</b>	Rwy Idg <b>8500</b>
		TDZE <b>312</b>
		Apt Elev <b>346</b>

# ILS RWY 16L (SA CAT I)

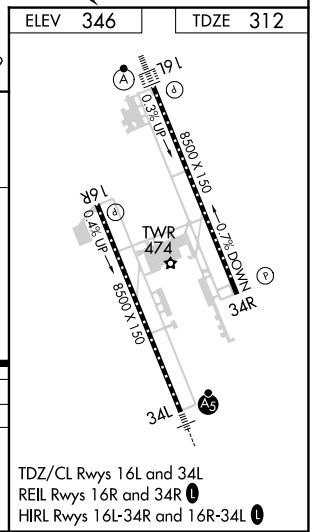
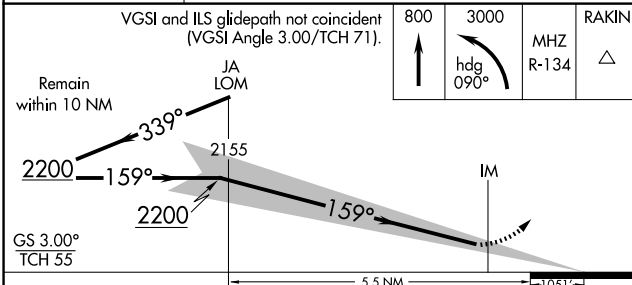
JACKSON-MEDGAR WILEY EVERS INTL (JAN)

Requires specific OPSPEC, MSPEC, or LOA approval and use of HUD to DA. When control tower closed, procedure NA. When local altimeter setting not received, procedure NA.	ALSIF-2	MISSED APPROACH: Climb to 800 then climbing left turn to 3000 on heading 090° and MHZ VORTAC R-134 to RAKIN INT/MHZ 16.5 DME and hold.
--	---------	--

ATIS <b>121.05</b>	JACKSON APP CON* <b>123.9 317.7</b>	JACKSON TOWER* <b>120.9 (CTAF) 352.0</b>	GND CON <b>121.7 348.6</b>	UNICOM <b>122.95</b>
-----------------------	--	---	-------------------------------	-------------------------



ELEV <b>346</b>	TDZE <b>312</b>
-----------------	-----------------



CATEGORY	A	B	C	D
S-ILS 16L	RA 169/14 150 DA 462			

**SA CATEGORY I ILS - SPECIAL AIRCREW & AIRCRAFT CERTIFICATION REQUIRED**

TDZ/CL Rwsys 16L and 34L  
REIL Rwsys 16R and 34R  
HIRL Rwsys 16L-34R and 16R-34L

SC-4, 20 MAR 2025 to 17 APR 2025

SC-4, 20 MAR 2025 to 17 APR 2025