


LOC I-FRL <b>109.3</b>	APP CRS <b>339°</b>	Rwy Idg TDZE Apt Elev	<b>8500</b> <b>329</b> <b>346</b>
---------------------------	------------------------	-----------------------------	---

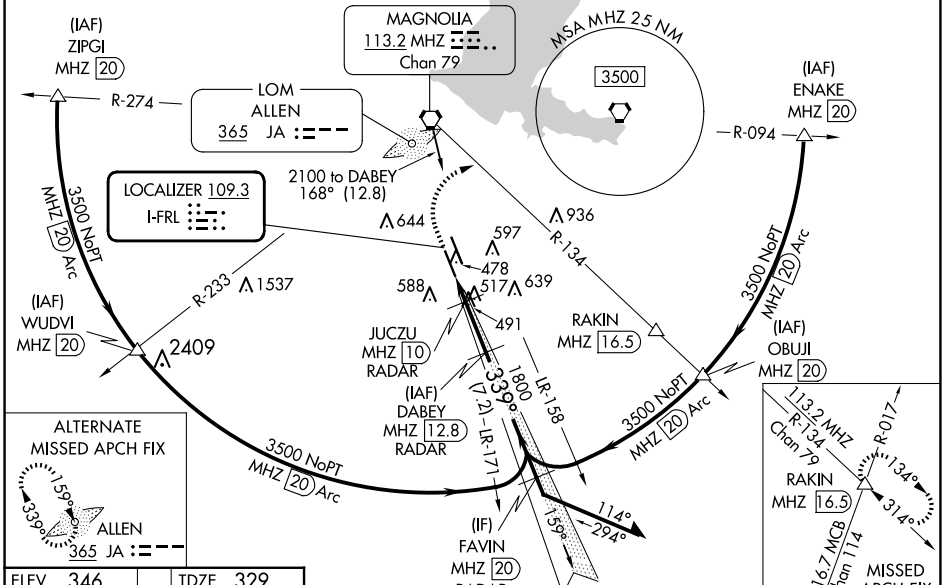
# ILS or LOC RWY 34L

JACKSON-MEDGAR WILEY EVERS INTL (JAN)

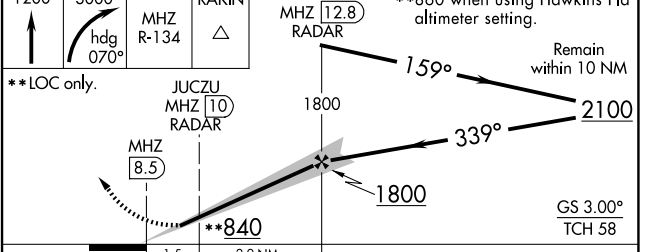
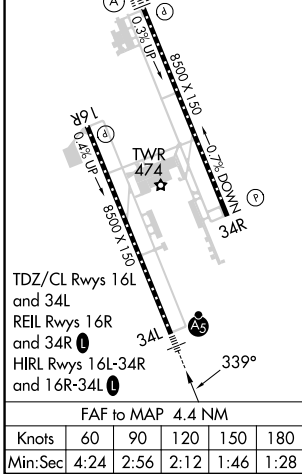
**⚠** Circling NA for Cat E southwest of Rwy 16R-34L. DME or RADAR required. When local altimeter setting not received, use Hawkins Fld altimeter setting and increase all DA 19 feet and all MDA 20 feet; increase S-ILS 34L visibility to RVR 4000. For inop ALS, increase S-ILS 34L Cat E visibility to RVR 4000 and S-LOC 34L all Cats visibility to 1½ SM. For inop ALS when using Hawkins Fld altimeter setting, increase S-LOC 34L Cat E visibility to 1½ SM. Inop table does not apply to S-ILS 34L when using Hawkins Fld altimeter setting. Rwy 34L helicopter visibility reduction below RVR 4000 NA. Procedure turn NA for Cat E. #DME from MHZ VORTAC.

**MALS**  
 MISSED APPROACH: Climb to 1200 then climbing right turn to 3000 on heading 070° and MHZ VORTAC R-134 to RAKIN INT/MHZ 16.5 DME and hold.

ATIS <b>121.05</b>	JACKSON APP CON* <b>123.9 317.7</b>	JACKSON TOWER* <b>120.9 (CTAF) 0 352.0</b>	GND CON <b>121.7 348.6</b>	UNICOM <b>122.95</b>
-----------------------	--	---	-------------------------------	-------------------------



ELEV 346	TDZE 329
----------	----------



CATEGORY	A	B	C	D	E
S-ILS 34L	529/18 200 (200-½)				
S-LOC 34L	840/40	511 (500-¾)	840/55	511 (500-1)	
CIRCLING	880-1	900-1	900-1½	960-2	1040-2½
	534 (600-1)	554 (600-1)	554 (600-1½)	614 (700-2)	694 (700-2½)
JUCZU DME MINIMUMS #					
S-LOC 34L	760/40 431 (500-¾)				
CIRCLING	880-1	900-1	900-1½	960-2	1040-2½
	534 (600-1)	554 (600-1)	554 (600-1½)	614 (700-2)	694 (700-2½)

SC-4, 20 MAR 2025 to 17 APR 2025

SC-4, 20 MAR 2025 to 17 APR 2025