

WAAS CH <b>49211</b> <b>W16B</b>	APP CRS <b>159°</b>	Rwy Idg <b>8500</b> TDZE <b>320</b> Apt Elev <b>346</b>
--	------------------------	---

# RNAV (GPS) RWY 16R

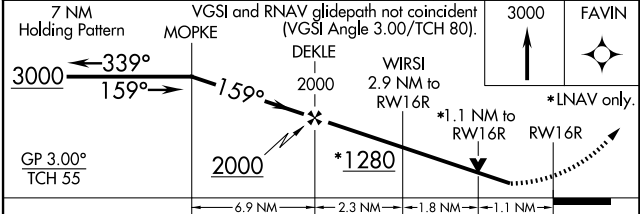
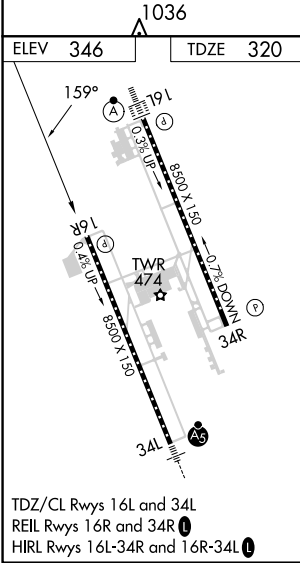
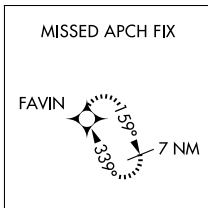
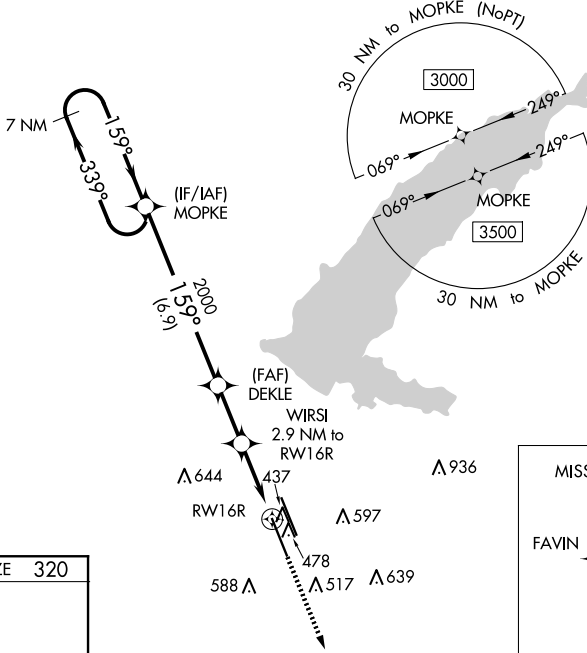
JACKSON-MEDGAR WILEY EVERS INTL (JAN)

RNP APCH.

**▽** For uncompensated Baro-VNAV systems, LNAV/VNAV NA below -7°C or above 54°C. Circling NA for Cat E southwest of Rwy 16R-34L. When local altimeter setting not received, use Hawkins Fld altimeter setting and increase all DA 19 feet and all MDA 20 feet, increase LNAV/VNAV all Cats and LNAV Cat C/D/E visibility 1/8 SM. Rwy 16R helicopter visibility reduction below 3/4 SM NA. VDP and Baro-VNAV NA when using Hawkins Fld altimeter setting.

**MISSED APPROACH:**  
Climb to 3000 direct FAVIN and hold.

ATIS <b>121.05</b>	JACKSON APP CON* <b>123.9 317.7</b>	JACKSON TOWER* <b>120.9 (CTAF) 352.0</b>	GND CON <b>121.7 348.6</b>	UNICOM <b>122.95</b>
-----------------------	--	---	-------------------------------	-------------------------



CATEGORY	A	B	C	D	E
LPV DA		621-1	301 (300-1)		
LNAV/VNAV DA		638-1	318 (300-1)		
LNAV MDA	720-1	400 (400-1)	720-1 1/8	400 (400-1 1/8)	
<b>C</b> CIRCLING	880-1 534 (600-1)	900-1 554 (600-1)	900-1 1/2 554 (600-1 1/2)	960-2 614 (700-2)	1040-2 1/2 694 (700-2 1/2)

SC-4, 20 MAR 2025 to 17 APR 2025

SC-4, 20 MAR 2025 to 17 APR 2025