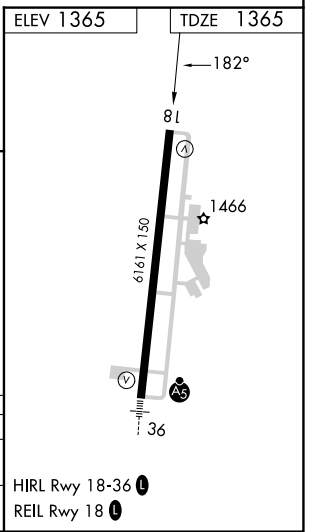
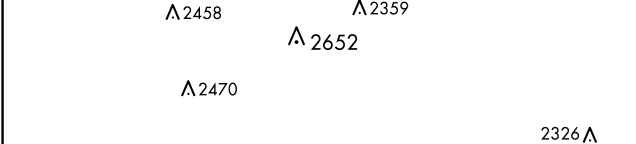
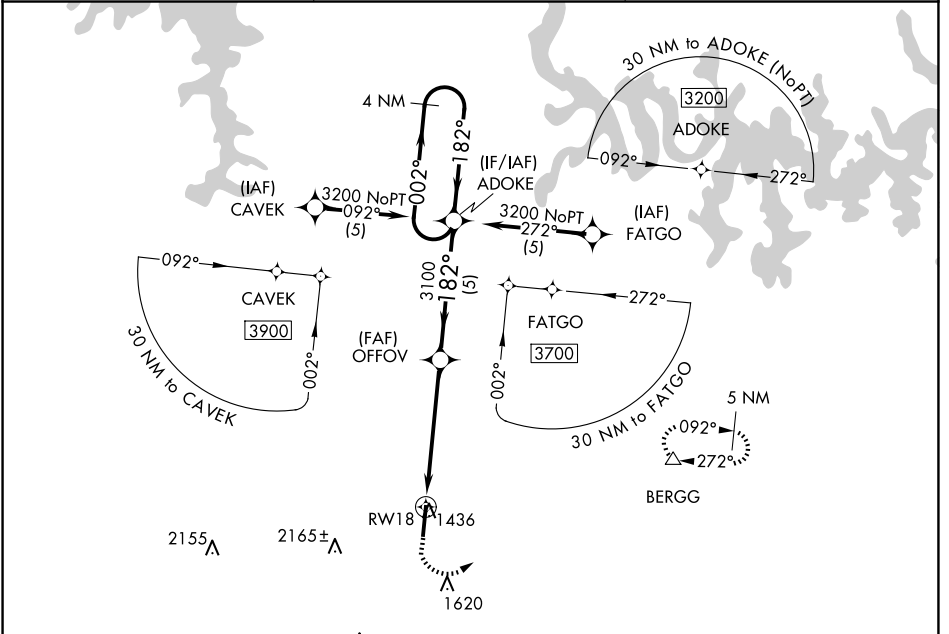


APP CRS	Rwy ldg	<b>6161</b>
<b>182°</b>	TDZE	<b>1365</b>
	Apt Elev	<b>1365</b>

# RNAV (GPS) RWY 18

BOONE COUNTY (HRO)

RNP APCH.	MISSED APPROACH: Climb to 1800 then climbing left turn to 3200 direct BERGG and hold.	
<p><b>▼</b> Rwy 18 helicopter visibility reduction below <math>\frac{3}{4}</math> SM NA.</p> <p><b>▲</b></p>		
ASOS <b>121.125</b>	MEMPHIS CENTER <b>126.85 281.55</b>	UNICOM <b>123.0 (CTAF) 0</b>



1800	3200	BERGG	VGSI and descent angles not coincident (VGSI Angle 3.00/TCH 50).			
OFFOV		ADOKE		4 NM Holding Pattern		
1 NM to RWY 18	3100	182°	002°	182°	3200	
1 NM	4.3 NM	5 NM				
CATEGORY	A	B	C	D		
LNAV MDA	1720-1 355 (400-1)					
CIRCLING	1840-1 475 (500-1)	1860-1 495 (500-1)	2340-3 975 (1000-3)	2560-3 1195 (1200-3)		

SC-1, 20 MAR 2025 to 17 APR 2025

SC-1, 20 MAR 2025 to 17 APR 2025