

WAAS CH <b>93711</b> <b>W36A</b>	APP CRS <b>002°</b>	Rwy ldg <b>6161</b> TDZE <b>1351</b> Apt Elev <b>1365</b>
--	------------------------	---

# RNAV (GPS) RWY 36

BOONE COUNTY (HRO)

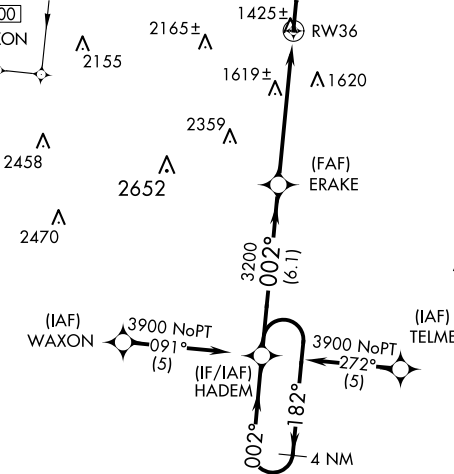
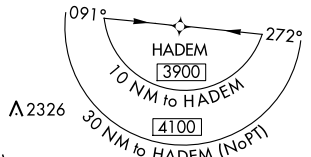
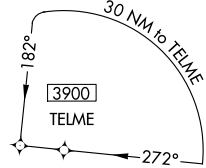
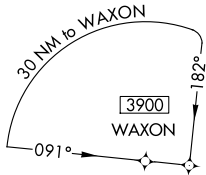
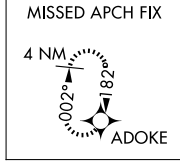
▼ For uncompensated Baro-VNAV systems, LNAV/VNAV NA below -17°C (2°F) or above 46°C (114°F). DME/DME RNP-0.3 NA. VDP and Baro-VNAV NA when using Mountain Home altimeter setting. When local altimeter setting not received, use Mountain Home altimeter setting and increase all DA 139 feet and all MDA 140 feet, increase LPV all Cats and LNAV and Circling Cat C and D visibility ¼ mile, increase LNAV/VNAV all Cats visibility ½ mile. For inoperative MALSR when using Mountain Home altimeter setting, increase LPV all Cats visibility to 1¼.

MALSRL  
AS  
MISSED APPROACH:  
Climb to 3200 direct ADOKE and hold.

ASOS  
**121.125**

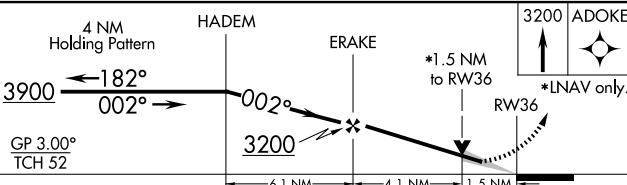
MEMPHIS CENTER  
**126.85 281.55**

UNICOM  
**123.0 (CTAF)**

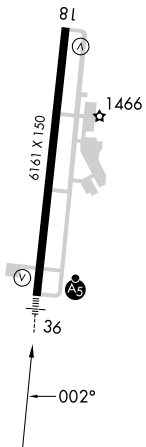


ELEV <b>1365</b>	TDZE <b>1351</b>
------------------	------------------

HIRL Rwy 18-36  
REIL Rwy 18



CATEGORY	A	B	C	D
LPV DA		1601-½	250 (300-½)	
LNAV/VNAV DA		1815-1	464 (500-1)	
LNAV MDA	1880-½	529 (600-½)	1880-1	1880-1¼
			529 (600-1)	529 (600-1¼)
CIRCLING	1880-1	515 (600-1)	2340-3	2560-3
			975 (1000-3)	1195 (1200-3)



SC-1, 20 MAR 2025 to 17 APR 2025

SC-1, 20 MAR 2025 to 17 APR 2025