

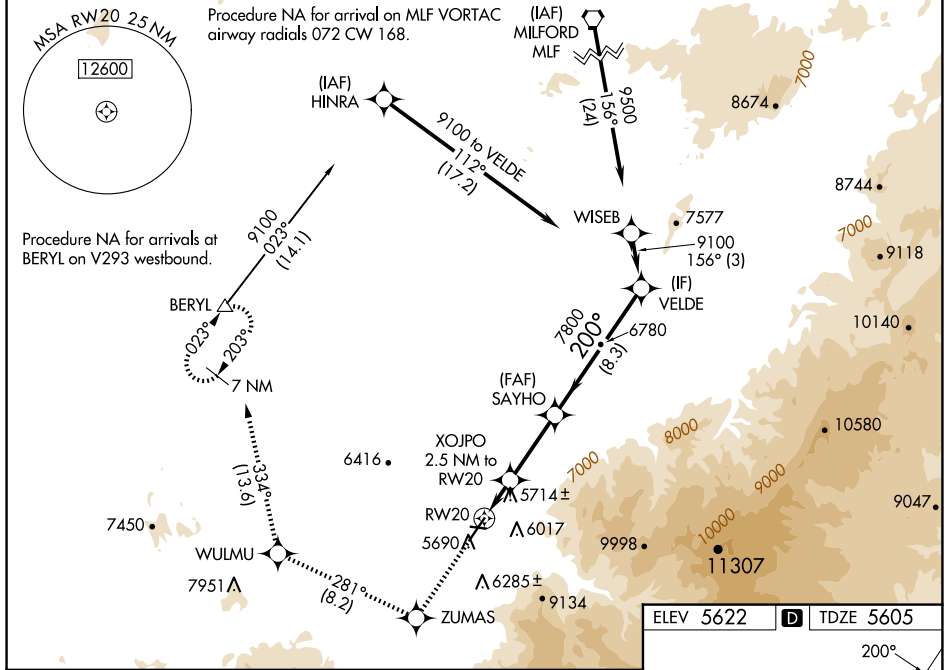
WAAS CH 72640 W20A	APP CRS 200°	Rwy Idg TDZE 5605 Apt Elev 5622
--	------------------------	---

RNAV (GPS) RWY 20

CEDAR CITY RGNL (CDC)

RNP APCH.	MALSR 	MISSED APPROACH: Climb to 9800 direct ZUMAS and on track 281° to WULMU and on track 334° to BERYL and hold.
 Circling NA east of Rwy 2-20. Baro-VNAV NA. For inop ALS, increase LNAV/VNAV all Cats visibility to 1½ SM and LNAV Cats C/D visibility to 1½ SM.		

ASOS 119.025	SALT LAKE CITY CENTER 125.575 379.275	UNICOM 123.0 (CTAF)
------------------------	---	-------------------------------



SW-4, 20 MAR 2025 to 17 APR 2025

SW-4, 20 MAR 2025 to 17 APR 2025

ELEV 5622	TDZE 5605
-----------	-----------

9800	ZUMAS	ir 281°	WULMU	ir 334°	BERYL	SAYHO	VELE
*LNAV only			XOJPO 2.5 NM to RW20			7800	9100
	RW20	*1.6 NM to RW20				7800	9100
	-1.6 NM	0.9 NM				6440*	GP 3.00° TCH 47
CATEGORY	A	B	C	D			
LPV DA	5825-½		220 (300-½)				
LNAV/VNAV DA	6015-¾		410 (400-¾)				
LNAV MDA	6180-½ 575 (600-½)		6180-¼ 575 (600-¼)				
CIRCLING	6180-1 558 (600-1)		6180-1 558 (600-1)				

