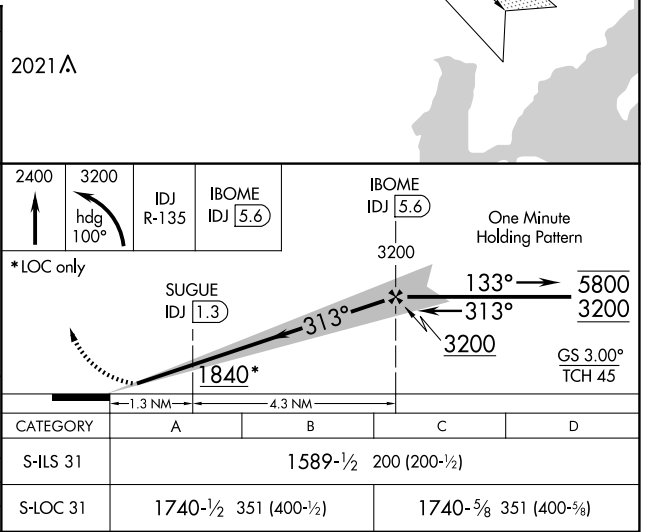
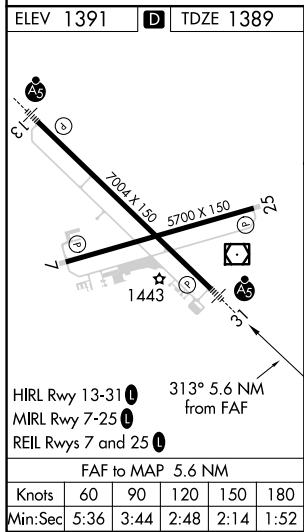
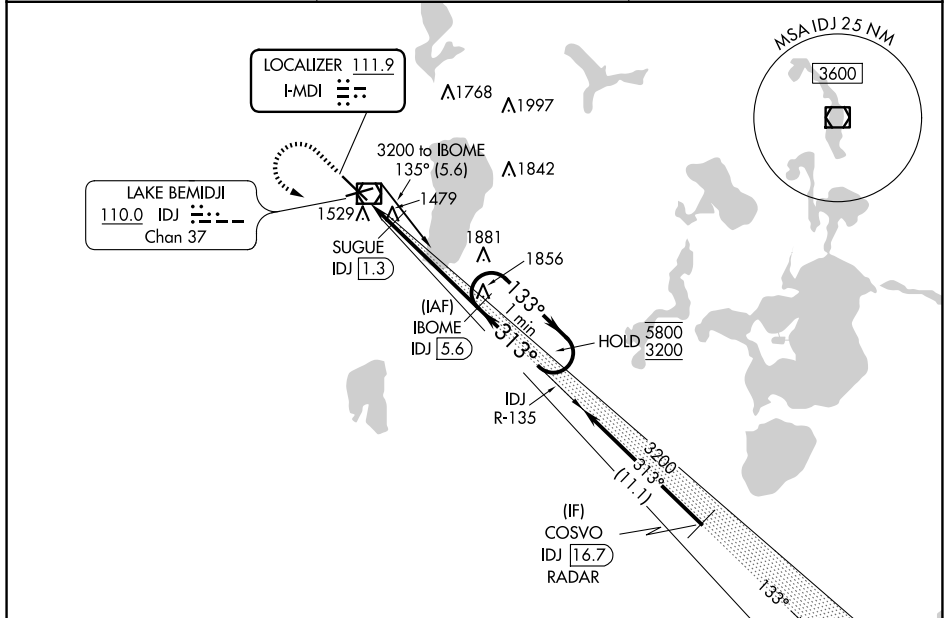


LOC I-MDI 111.9	APP CRS 313°	Rwy ldg 7002
		TDZE 1389
		Apt Elev 1391

ILS or LOC RWY 31

BEMIDJI RGNL (BJI)

DME required. RADAR required for procedure entry.		MALSR 	MISSED APPROACH: Climb to 2400 then climbing left turn to 3200 on heading 100° and IDJ VOR/DME R-135 to IBOME/IDJ 5.6 DME and hold.
Autopilot coupled approach NA below 2126. DME from IDJ VOR/DME. Simultaneous reception of I-MDI and IDJ DME required. For inop ALS, increase S-LOC 31 Cat C/D visibility to 1 SM.			
AWOS-3 119.275	MINNEAPOLIS CENTER 134.75 251.1	UNICOM 122.8 (CTAF) 0	



NC-1, 20 MAR 2025 to 17 APR 2025

NC-1, 20 MAR 2025 to 17 APR 2025