

| | | | |
|---|------------------------|---|-------------|
| VOR/DME IDJ 110.0 Chan 37 | APP CRS 126° | Rwy Idg TDZE 1391 Apt Elev 1391 | 7002 |
|---|------------------------|---|-------------|

VOR/DME RWY 13

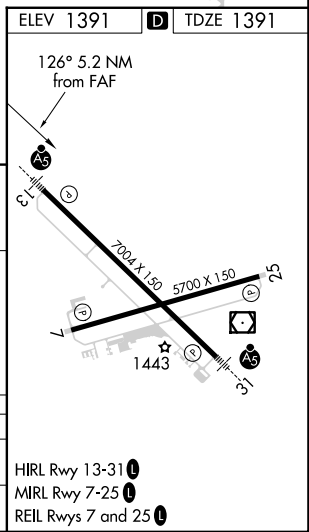
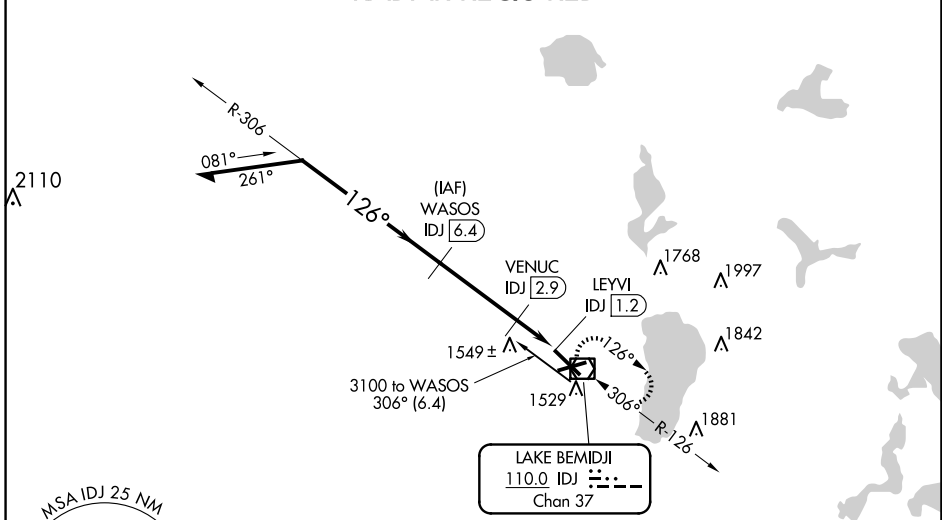
BEMIDJI RGNL (BJI)

NA When local altimeter setting not received, use Park Rapids altimeter setting and increase all MDA 100 feet, increase S-13 Cat C and D visibility 1/4 mile. VDP NA with Park Rapids altimeter setting. For inoperative MALSRL, increase S-13 Cat A and B visibility to 1 mile and Cat C and D visibility to 1 1/2 mile. For inoperative MALSRL when using Park Rapids altimeter setting, increase S-13 Cat A and B visibility to 1 mile and Cat C and D visibility to 1 3/8 mile. Helicopter visibility reduction below 3/4 SM not authorized.

MALSRL
MISSED APPROACH: Climb to 3100 direct IDJ VOR/DME and hold, continue climb-in-hold to 3100.

| | | |
|--------------------------|---|-------------------------------|
| AWOS-3 119.275 | MINNEAPOLIS CENTER 134.75 251.1 | UNICOM 122.8 (CTAF) |
|--------------------------|---|-------------------------------|

RADAR REQUIRED



| | | |
|---------------------|---------------|---------------|
| Remain within 10 NM | WASOS IDJ 6.4 | 3100 IDJ |
| 3100 | 306° | 3100 |
| 3100 | 126° | 3100 |
| 2000 | 126° | 2000 |
| VENUC IDJ 2.3 | 1549± | LEYVI IDJ 1.2 |
| 3.4 NM | 0.6 | 1.1 NM |

| CATEGORY | A | B | C | D |
|-----------------|------------------------|-----------------------|-------------------------------|-----------------------|
| S-13 | 1800-3/4 409 (500-3/4) | | | |
| CIRCLING | 1840-1 449 (500-1) | 1860-1 469 (500-1) | 1860-1 1/2 469 (500-1 1/2) | 1960-2 569 (600-2) |

HIRL Rwy 13-31
MRL Rwy 7-25
REIL Rws 7 and 25

NC-1, 20 MAR 2025 to 17 APR 2025

NC-1, 20 MAR 2025 to 17 APR 2025