

VORTAC LAX <b>113.6</b> Chan <b>83</b>	APP CRS <b>135°</b>	Rwy Idg TDZE <b>96</b> Apt Elev <b>103</b>
--	------------------------	--

# VOR RWY 11L

ZAMPERINI FLD (TOA)

**⚠** Circling NA southwest of Rwy 11R-29L. When local altimeter setting not received, except for operators with approved weather reporting service, use Los Angeles Intl altimeter setting and increase all MDA 40 feet and increase S-11L Cat A visibility and Circling Cat C visibility 1/2 SM. Rwy 11L helicopter visibility reduction below 3/4 SM NA.

**MISSED APPROACH:** Climbing left turn to 3000 on heading 075° and on LAX VORTAC R-123 to WILMA INT/LAX 13 DME and hold, continue climb-in-hold to 3000.

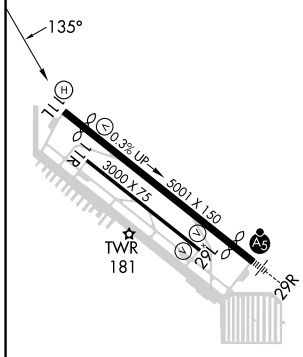
ATIS <b>125.6</b>	SOCAL APP CON <b>124.3 363.2</b> (Rwys 11L, 11R) <b>127.2 269.6</b> (Rwys 29L, 29R)	TORRANCE TOWER* <b>133.075 257.8</b> (NORTH) <b>124.0</b> (CTAF) <b>257.8</b> (SOUTH)	GND CON <b>120.9</b>	UNICOM <b>122.95</b>
----------------------	---	---	-------------------------	-------------------------

⚠ 2908



Procedure NA for arrivals at SMO VORTAC on T245-247-249 northwest bound.

ELEV <b>103</b>	TDZE <b>96</b>
-----------------	----------------



REIL Rwy 11L  
MIRL Rwys 11L-29R and 11R-29L  
FAF to MAP 2.2 NM

Knots	60	90	120	150	180
Min:Sec	2:12	1:28	1:06	0:53	0:44

VGSI and descent angles not coincident (VGSI Angle 3.50/TCH 10).

3000	hdg 075°	LAX R-123	WILMA
------	----------	-----------	-------

2900	135°	BHOOV INT LAX 6	MARRP LAX 8.2
6 NM		2.2 NM	
		0.5 NM	

CATEGORY	A	B	C	D
S-11L	980-1 884 (900-1)	980-1 1/4 884 (900-1 1/4)	980-2 1/2 884 (900-2 1/2)	NA
<b>☑</b> CIRCLING	980-1 1/4	877 (900-1 1/4)	980-2 1/2 877 (900-2 1/2)	NA

SW-3, 20 MAR 2025 to 17 APR 2025

SW-3, 20 MAR 2025 to 17 APR 2025