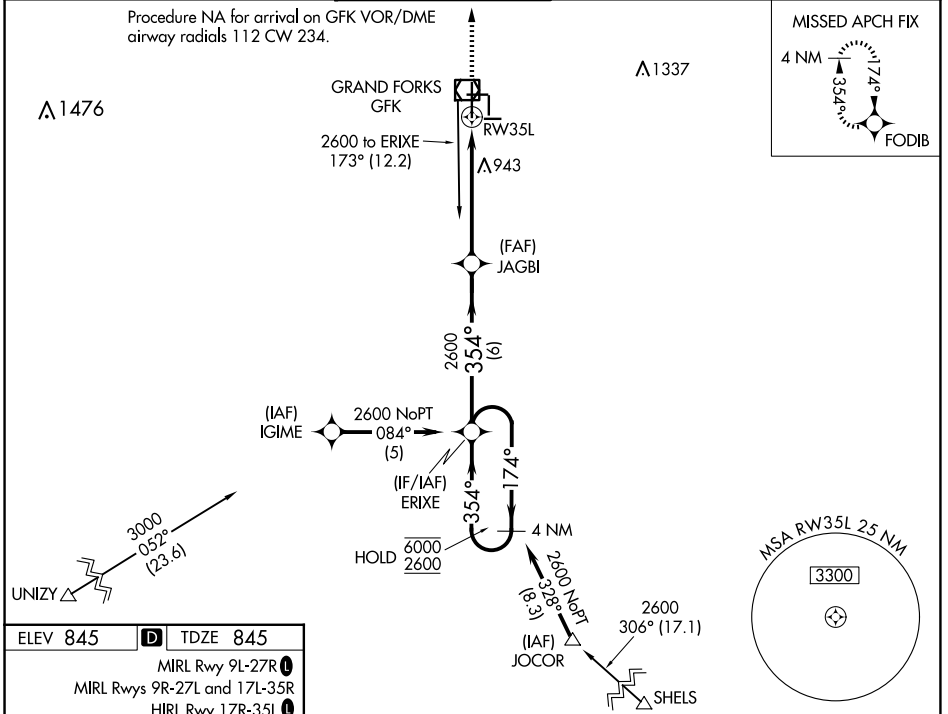


WAAS CH 70313 W35A	APP CRS 354°	Rwy Idg TDZE Apt Elev	7351 845 845
--	------------------------	-----------------------------	---

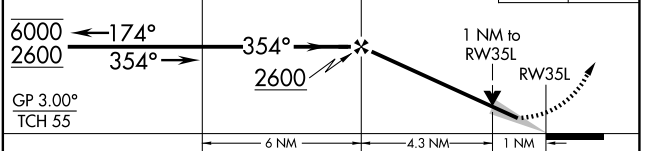
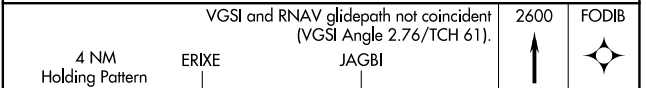
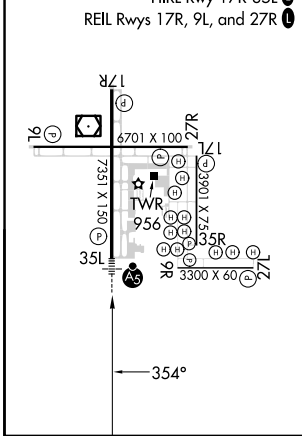
RNAV (GPS) RWY 35L

GRAND FORKS INTL (GFK)

RNP APCH. ▼ For uncompensated Baro-VNAV systems, LNAV/VNAV NA below -1.6°C or above 54°C. For Inop ALS, increase LNAV/VNAV Cat D visibility to RVR 5000 and LNAV Cat C/D visibility to RVR 5500.		MALSR 	MISSED APPROACH: Climb to 2600 direct FODIB and hold.		
ATIS 119.4	GRAND FORKS APP CON ★ 118.1 318.1	GRAND FORKS TOWER★ 118.4(CTAF) 350.35	GND CON 124.575	CLNC DEL 135.725	UNICOM 122.95



ELEV 845	D	TDZE 845
MIRL Rwy 9L-27R		
MIRL Rwy 9R-27L and 17L-35R		
HIRL Rwy 17R-35L		
REIL Rwy 17R, 9L, and 27R		



CATEGORY	A	B	C	D
LPV DA	1095/24 250 (300-½)			
LNAV/VNAV DA	1174/26 329 (400-½)			1174/40 329 (400-¾)
LNAV MDA	1200/24	355 (400-½)	1200/30 355 (400-¾)	1200/50 355 (400-1)
C CIRCLING	1280-1 435 (500-1)	1300-1 455 (500-1)	1400-1½ 555 (600-1½)	1420-2 575 (600-2)

NC-1, 20 MAR 2025 to 17 APR 2025

NC-1, 20 MAR 2025 to 17 APR 2025