

**TOP ALTITUDE:  
ASSIGNED BY ATC**

LONE STAR DEP CON  
135.975 379.9  
CLNC DEL  
121.875  
CLNC DEL (when twr closed)  
118.85  
GND CON  
121.875  
ARLINGTON TOWER ★  
128.625 (CTAF)

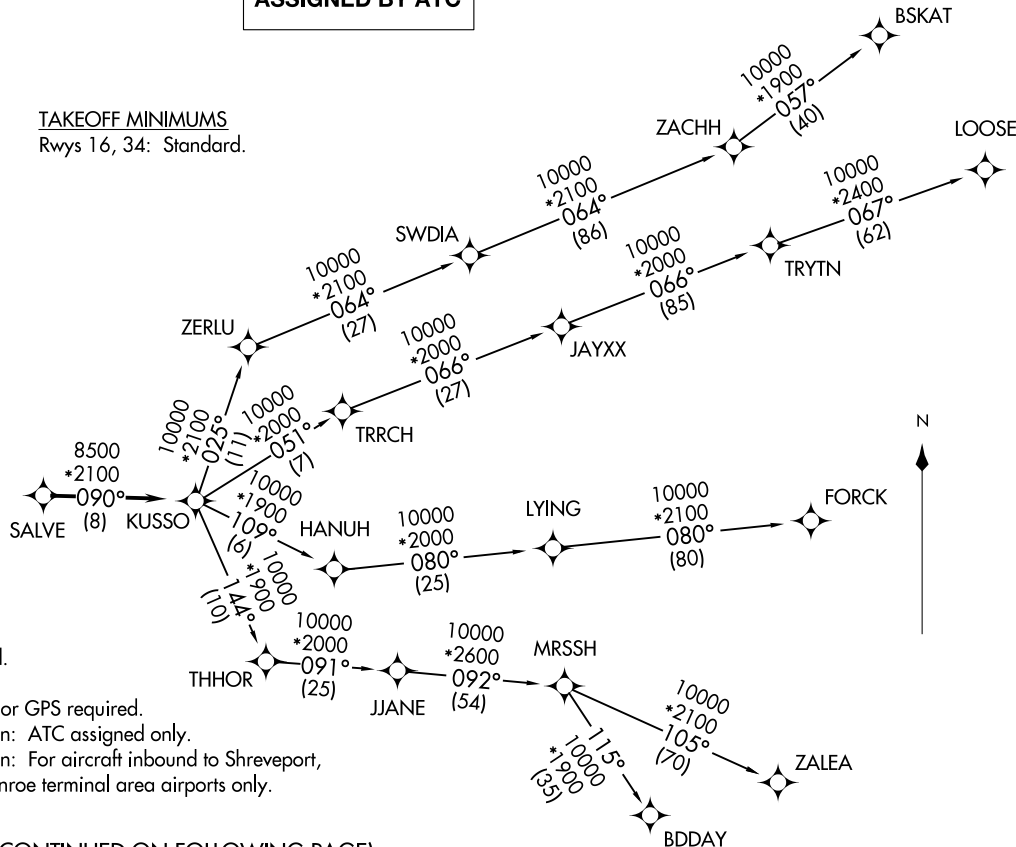
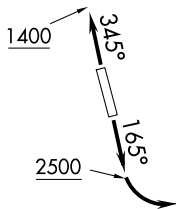
**TAKEOFF MINIMUMS**  
Rwys 16, 34: Standard.

**KUSSO ONE DEPARTURE (RNAV)**  
(KUSSO1 .KUSSO) 24MAR22

**(KUSSO1 .KUSSO) 24305**  
**KUSSO ONE DEPARTURE (RNAV)**

AL-5189 (FAA)

**ARLINGTON MUNI (GKY)**  
ARLINGTON, TEXAS



- NOTE: RADAR required.
- NOTE: RNAV 1.
- NOTE: DME/DME/IRU or GPS required.
- NOTE: BDDAY Transition: ATC assigned only.
- NOTE: MRSSH Transition: For aircraft inbound to Shreveport, Jackson and Monroe terminal area airports only.

(CONTINUED ON FOLLOWING PAGE)

NOTE: Chart not to scale.

**ARLINGTON, TEXAS**  
**ARLINGTON MUNI (GKY)**

# KUSSO ONE DEPARTURE (RNAV)



## DEPARTURE ROUTE DESCRIPTION

TAKEOFF RUNWAY 16: Climb on heading 165° to 2500 before turning left.

TAKEOFF RUNWAY 34: Climb on heading 345° to 1400 before turning southeast bound.

When entering controlled airspace, fly heading assigned by ATC, expect vector to SALVE, then on track 090° to KUSSO, then on assigned transition. Maintain ATC assigned altitude, expect filed altitude 10 minutes after departure.

BDDAY TRANSITION (KUSSO1.BDDAY)

BSKAT TRANSITION (KUSSO1.BSKAT)

FORCK TRANSITION (KUSSO1.FORCK)

LOOSE TRANSITION (KUSSO1.LOOSE)

MRSSH TRANSITION (KUSSO1.MRSSH)

ZALEA TRANSITION (KUSSO1.ZALEA)

SC-2, 20 MAR 2025 to 17 APR 2025

SC-2, 20 MAR 2025 to 17 APR 2025