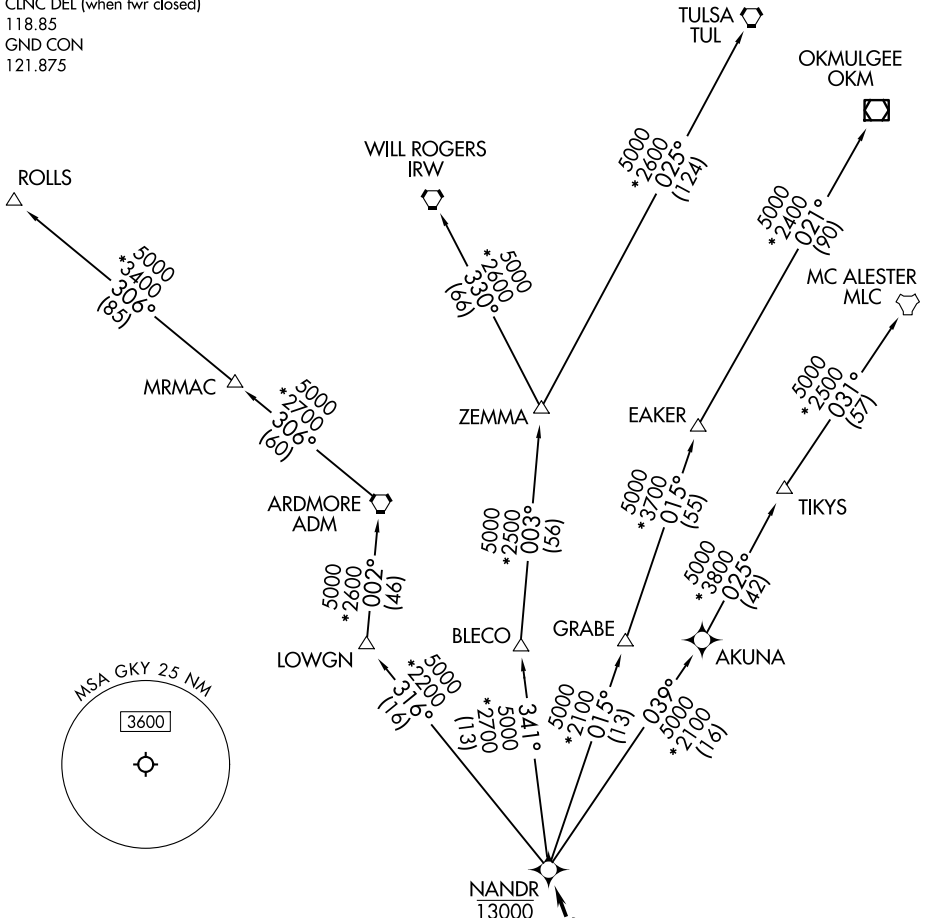


NANDR TWO DEPARTURE (RNAV)

LONE STAR DEP CON
 135.975 379.9
 CLNC DEL
 121.875
 CLNC DEL (when twr closed)
 118.85
 GND CON
 121.875

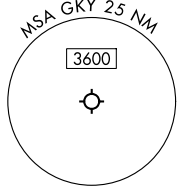
RNAV 1 - DME/DME/IRU or GPS.
 RADAR required.

**TOP ALTITUDE:
 ASSIGNED BY ATC**



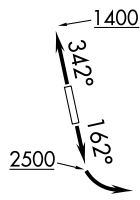
SC-2, 20 MAR 2025 to 17 APR 2025

SC-2, 20 MAR 2025 to 17 APR 2025



TAKEOFF MINIMUMS
 Rwy's 16, 34: Standard.

NOTE: EAKER Transition: For TUL terminal arrivals only.
 NOTE: TULSA Transition: For all aircraft overflying TUL VORTAC.
 NOTE: Aircraft arriving to the Oklahoma City terminal area, file and expect the ZEMMA enroute transition.



(CONTINUED ON FOLLOWING PAGE)

NOTE: Chart not to scale

NANDR TWO DEPARTURE (RNAV)



DEPARTURE ROUTE DESCRIPTION

TAKEOFF RUNWAY 16: Climb on heading 162° to 2500 before turning left or as assigned by ATC, thence

TAKEOFF RUNWAY 34: Climb on heading 342° to 1400 before turning southeast bound or as assigned by ATC, thence

. . . . expect RADAR vectors to cross CUZNO at or above 3000, then on track 357° to cross NANDR at or below 13000, then on assigned transition.

EAKER TRANSITION (NANDR2.EAKER)

MC ALESTER TRANSITION (NANDR2.MLC)

OKMULGEE TRANSITION (NANDR2.OKM)

ROLLS TRANSITION (NANDR2.ROLLS)

TULSA TRANSITION (NANDR2.TUL)

WILL ROGERS TRANSITION (NANDR2.IRW)

ZEMMA TRANSITION (NANDR2.ZEMMA)

SC-2, 20 MAR 2025 to 17 APR 2025

SC-2, 20 MAR 2025 to 17 APR 2025