

LOC I-POC <b>110.5</b>	APP CRS <b>259°</b>	Rwy Idg TDZE Apt Elev <b>4151</b> <b>1005</b> <b>1014</b>
---------------------------	------------------------	--

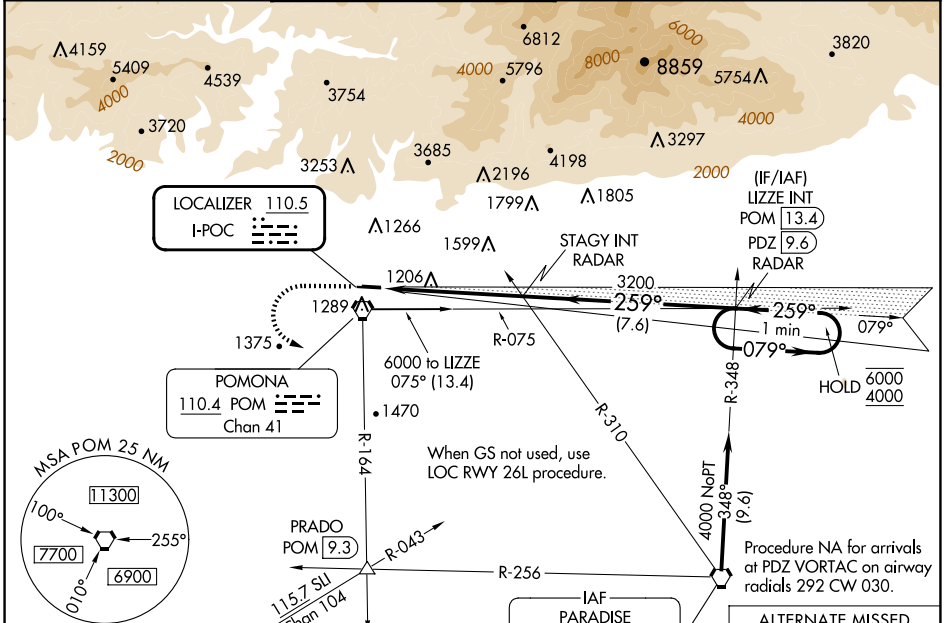
# ILS RWY 26L

BRACKETT FLD (POC)

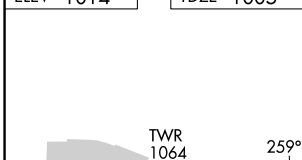
**▼** Rwy 26L helicopter visibility reduction below 3/4 SM NA.  
**▲** When local altimeter setting not received, use Ontario Intl altimeter setting and increase DA to 1364.

**MISSED APPROACH:** Climb to 2100 then climbing left turn to 4000 on POM VORTAC R-164 to PRADO INT/POM 9.3 DME.

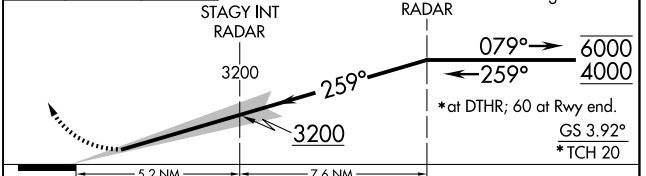
ATIS <b>124.4</b>	SOCAL APP CON <b>125.5 349.0</b>	BRACKETT TOWER* RWY 8R/26L RWY 8L/26R <b>118.2 (CTAF)</b> <b>133.3</b>	GND CON <b>125.0</b>	CLNC DEL <b>121.875</b>	UNICOM <b>122.95</b>
----------------------	-------------------------------------	--	-------------------------	----------------------------	-------------------------



ELEV 1014	TDZE 1005
-----------	-----------



2100	4000	PRADO	VGSI and ILS glidepath not coincident (VGSI Angle 3.76/TCH 18).	LIZZE INT PDZ 9.6 RADAR	One Minute Holding Pattern
↑	POM R-164	△			



CATEGORY	A	B	C	D
S-ILS 26L	1332-1	327 (400-1)		NA

SW-3, 20 MAR 2025 to 17 APR 2025

SW-3, 20 MAR 2025 to 17 APR 2025