

WAAS CH 58022 W22A	APP CRS 223°	Rwy Idg TDZE Apt Elev	4042 172 172
--	------------------------	-----------------------------	---

RNAV (GPS) RWY 22

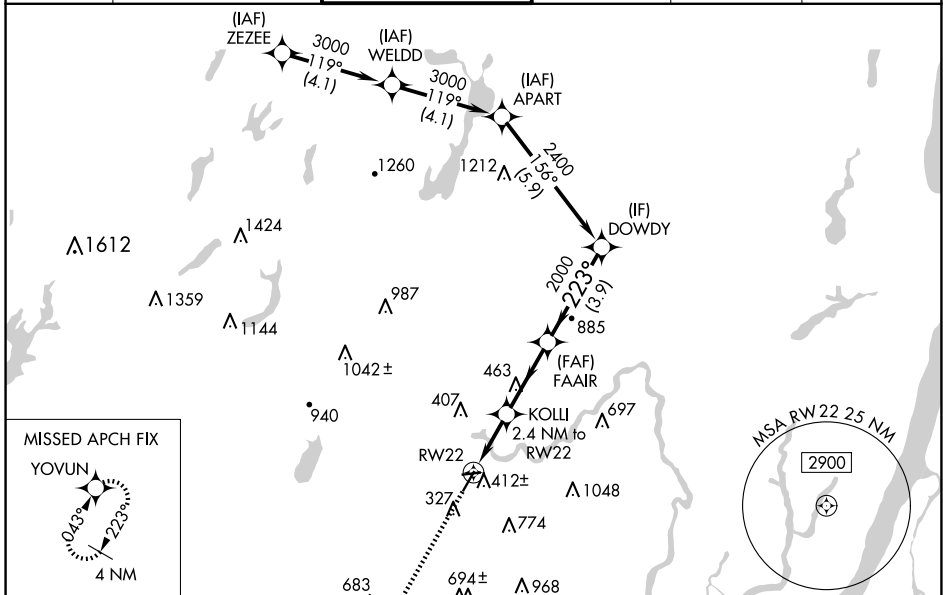
ESSEX COUNTY (CDW)

RNP APCH - GPS.

⚠ Rwy 22 helicopter visibility reduction below 1 SM NA.
⚠ For uncompensated Baro-VNAV systems,
 LNAV/VNAV NA below -15°C or above 54°C.
 Circling Rwy 10, 28 NA at night. Circling NA E of Rwy 4-22.

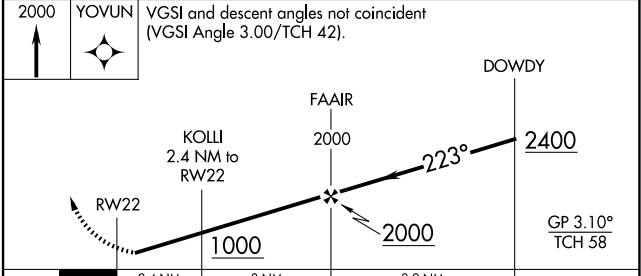
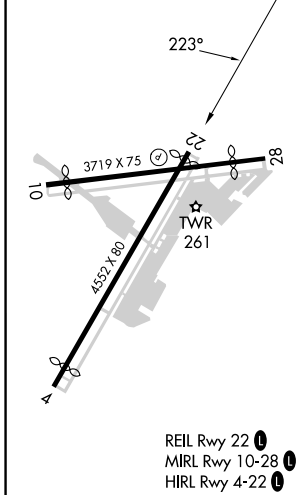
MISSED APPROACH:
 Climb to 2000 direct
 YOYUN and hold.

ATIS 135.5	NEWARK APP CON 127.6 379.9	CALDWELL TOWER ★ 119.8 (CTAF) 0	GND CON 121.9	CLNC DEL 121.1	UNICOM 122.95
----------------------	--------------------------------------	--	-------------------------	--------------------------	-------------------------



ELEV 172	D	TDZE 172
----------	----------	----------

2000 YOYUN VGSI and descent angles not coincident (VGSI Angle 3.00/TCH 42).



CATEGORY	A	B	C	D
LPV DA	459-1	287 (300-1)		NA
LNAV/VNAV DA	610-1 ³ / ₈	438 (500-1 ³ / ₈)		NA
LNAV MDA	680-1	508 (600-1)	680-1 ³ / ₈ 508 (600-1 ³ / ₈)	NA
C CIRCLING	960-1 788 (800-1)	1040-2 868 (900-2)	1100-2 ³ / ₄ 928 (1000-2 ³ / ₄)	NA

NE-2, 20 MAR 2025 to 17 APR 2025

NE-2, 20 MAR 2025 to 17 APR 2025