

PLESS FIVE DEPARTURE

AL-5316 (FAA)

ST LOUIS DOWNTOWN (CPS)
CAHOKIA/ST. LOUIS, ILLINOIS

EC-3, 20 MAR 2025 to 17 APR 2025

TOP ALTITUDE: ASSIGNED BY ATC

ST. LOUIS
117.4 STL
Chan 121

TAKEOFF MINIMUMS

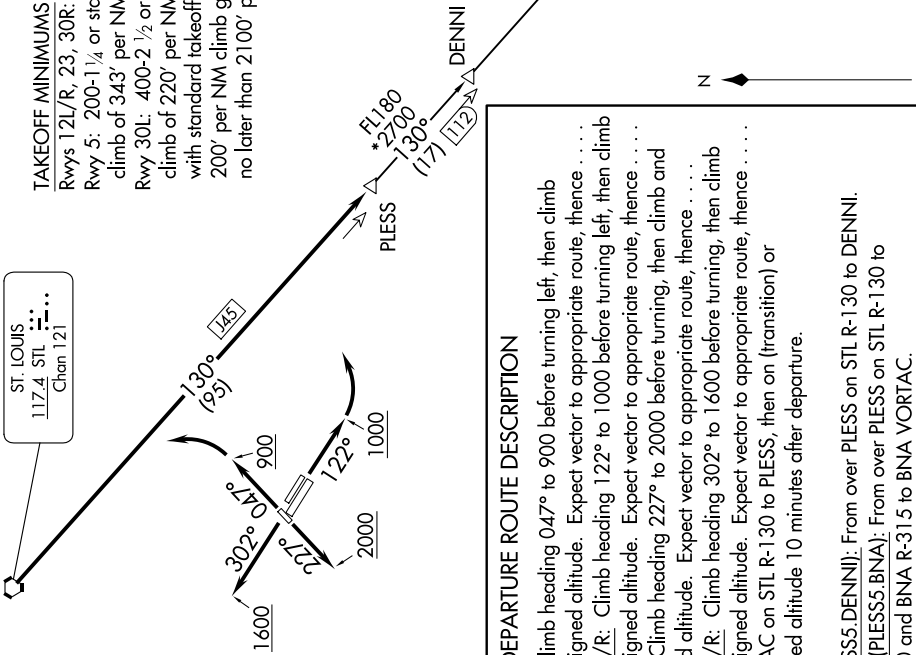
Rwys 12L/R, 23, 30R: Standard.
Rwy 5: 200-1/4 or standard with minimum
climb of 343' per NM to 700.
Rwy 30L: 400-2 1/2 or standard with minimum
climb of 220' per NM to 900, or alternatively,
with standard takeoff minimums and a normal
200' per NM climb gradient; takeoff must occur
no later than 2100' prior to DER.

ATIS
121.45
CUNC DEL
118.275
121.8 (when tower closed)
GND CON
121.8

DOWNTOWN TOWER*
119.925 379.3
ST LOUIS DEP CON
123.7 371.875

POCKET CITY
113.3 PKV
Chan 80

NASHVILLE
114.1 BNA
Chan 88



DEPARTURE ROUTE DESCRIPTION

TAKEOFF RUNWAY 5: Climb heading 047° to 900 before turning left, then climb and maintain 2500 or assigned altitude. Expect vector to appropriate route, thence

TAKEOFF RUNWAYS 12L/R: Climb heading 122° to 1000 before turning left, then climb and maintain 2500 or assigned altitude. Expect vector to appropriate route, thence

TAKEOFF RUNWAY 23: Climb heading 227° to 2000 before turning, then climb and maintain 2500 or assigned altitude. Expect vector to appropriate route, thence

TAKEOFF RUNWAYS 30L/R: Climb heading 302° to 1600 before turning, then climb and maintain 2500 or assigned altitude. Expect vector to appropriate route, thence

. . . . from over STL VORTAC on STL R-130 to PLESS, then on (transition) or (assigned route). Expect filed altitude 10 minutes after departure.

DENNI TRANSITION (PLESS5.DENNI): From over PLESS on STL R-130 to DENNI.

NASHVILLE TRANSITION (PLESS5.BNA): From over PLESS on STL R-130 to DENNI, then on STL R-130 and BNA R-315 to BNA VORTAC.

NOTE: Chart not to scale.

PLESS FIVE DEPARTURE

EC-3, 20 MAR 2025 to 17 APR 2025