

| | | | |
|--|------------------------|---|-------------|
| WAAS CH 70521 W30A | APP CRS 302° | Rwy Idg TDZE 411 Apt Elev 413 | 7002 |
|--|------------------------|---|-------------|

RNAV (GPS) RWY 30L

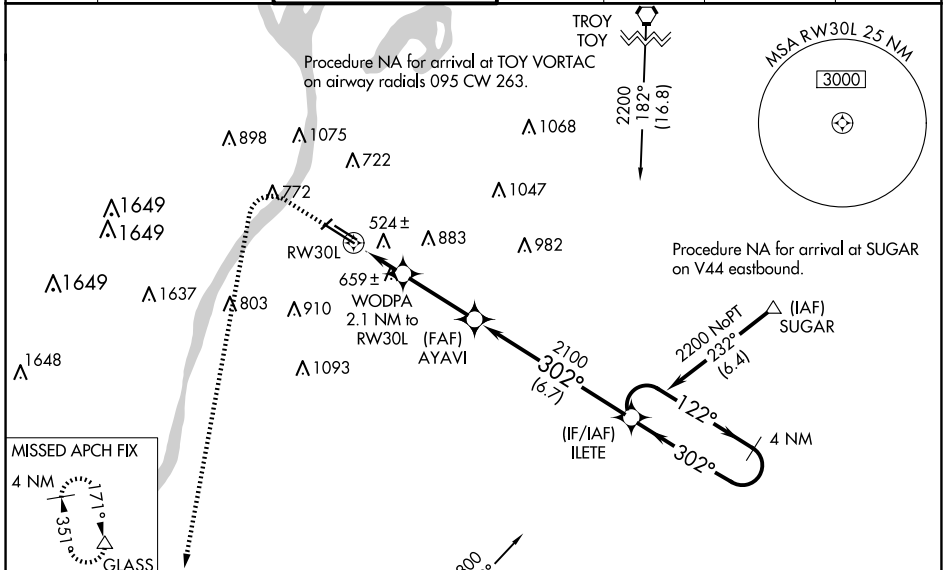
ST LOUIS DOWNTOWN (CPS)

⚠ DME/DME RNP-0.3 NA. When local altimeter setting not received, use St Louis Lambert Intl altimeter setting and increase LPV DA to 674 feet, LNAV/VNAV DA to 890 feet, and all MDA 80 feet; increase LNAV/VNAV all Cats visibility $\frac{1}{4}$ SM, LNAV Cats C/D visibility $\frac{3}{8}$ SM, and Circling Cat C visibility $\frac{1}{4}$ SM. VDP and Baro-VNAV NA with St Louis Lambert Intl altimeter setting. For uncompensated Baro-VNAV systems, LNAV/VNAV NA below -1.5°C (5°F) or above 41°C (105°F). When using St Louis Lambert Intl altimeter setting; for inop MALS, increase LPV all Cats visibility to $\frac{3}{8}$ mile and LNAV Cats C/D visibility to $1\frac{3}{8}$ mile. Night landing: Rwy 5 NA.

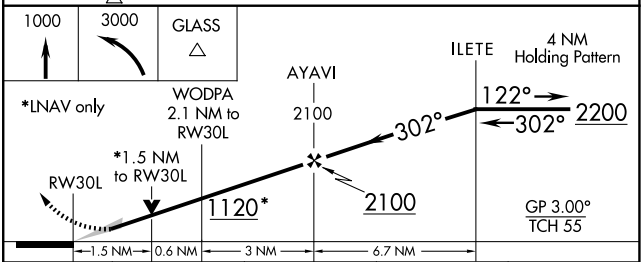
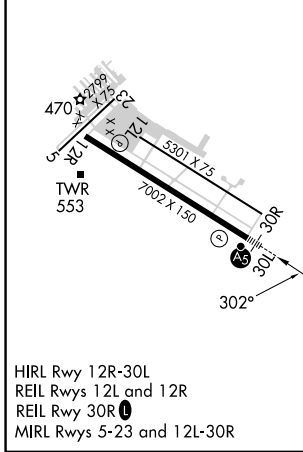


MISSED APPROACH:
Climb to 1000 then climbing left turn to 3000 direct GLASS and hold.

| | | | | | | |
|-----------------------|--|---|-------------------------|----------------------------|---|-------------------------|
| ATIS 121.45 | ST LOUIS APP CON 123.7 371.875 | DOWNTOWN TOWER * 119.925 (CTAF) 0 379.3 | GND CON 121.8 | CLNC DEL 118.275 | CLNC DEL 121.8 (When twr closed) | UNICOM 122.95 |
|-----------------------|--|---|-------------------------|----------------------------|---|-------------------------|



| | | |
|-----------------|----------|-----------------|
| ELEV 413 | D | TDZE 411 |
|-----------------|----------|-----------------|



| CATEGORY | A | B | C | D |
|--------------|----------------------|---------------------------|--|------------------------|
| LPV DA | | 611- $\frac{1}{2}$ | 200 (200- $\frac{1}{2}$) | |
| LNAV/VNAV DA | | 827- $\frac{7}{8}$ | 416 (500- $\frac{7}{8}$) | |
| LNAV MDA | 940- $\frac{1}{2}$ | 529 (600- $\frac{1}{2}$) | 940-1 | 529 (600-1) |
| CIRCLING | 940-1 527 (600-1) | 1120-1 707 (800-1) | 1240-2 $\frac{1}{2}$ 827 (900-2 $\frac{1}{2}$) | 1380-3 967 (1000-3) |

EC-3, 20 MAR 2025 to 17 APR 2025

EC-3, 20 MAR 2025 to 17 APR 2025