

WAAS CH 86211 W23A	APP CRS 232°	Rwy Idg 6001 TDZE 723 Apt Elev 727
--	------------------------	---

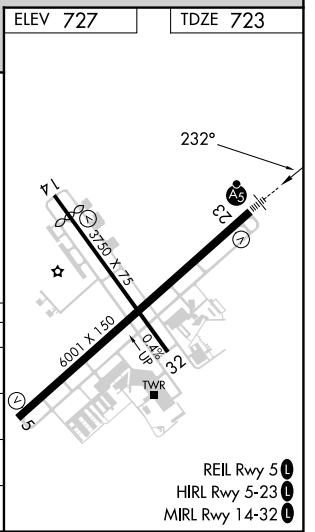
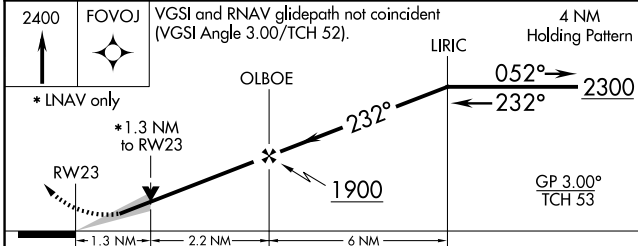
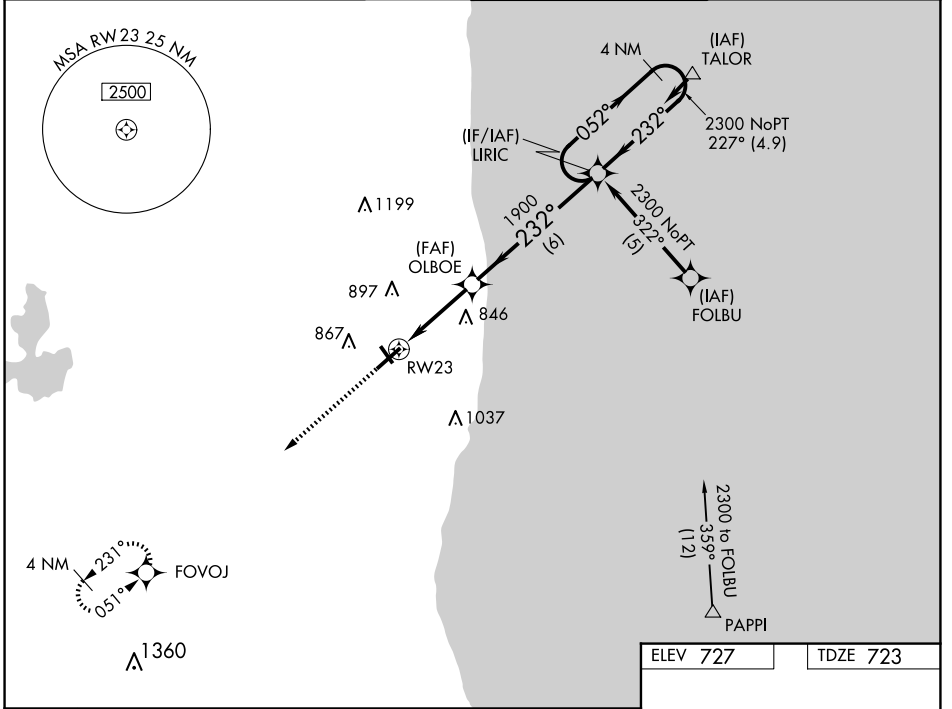
RNAV (GPS) RWY 23

WAUKEGAN NTL (UGN)

⚠ Circling to Rwy 14, 32 NA at night. For uncompensated Baro-VNAV systems, LNAV/VNAV NA below -16° C (4° F) or above 54° C (130° F). DME/DME RNP-0.3 NA. For inoperative ALS, increase LNAV/VNAV all Cats visibility to 3/8 SM.

MALS MISSED APPROACH: Climb to 2400 direct FOVOJ and hold.

ATIS 132.4	CHICAGO APP CON 120.55	WAUKEGAN TOWER ★ 120.05 (CTAF) 0 273.55	GND CON 121.65
----------------------	----------------------------------	---	--------------------------



CATEGORY	A	B	C	D
LPV DA	980-1/2 257 (300-1/2)			
LNAV/VNAV DA	1020-1/2 297 (300-1/2)		1020-3/4 297 (300-3/4)	
LNAV MDA	1160-1/2 437 (500-1/2)		1160-3/4 437 (500-3/4)	
CIRCLING	1220-1 493 (500-1)		1400-2 1/4 673 (700-2 1/4)	

EC-3, 20 MAR 2025 to 17 APR 2025

EC-3, 20 MAR 2025 to 17 APR 2025

- REIL Rwy 5
- HIRL Rwy 5-23
- MIRL Rwy 14-32