

(GABBE3.GABBE) 24193

# GABBE THREE DEPARTURE(RNAV)

AL-5326 (FAA)

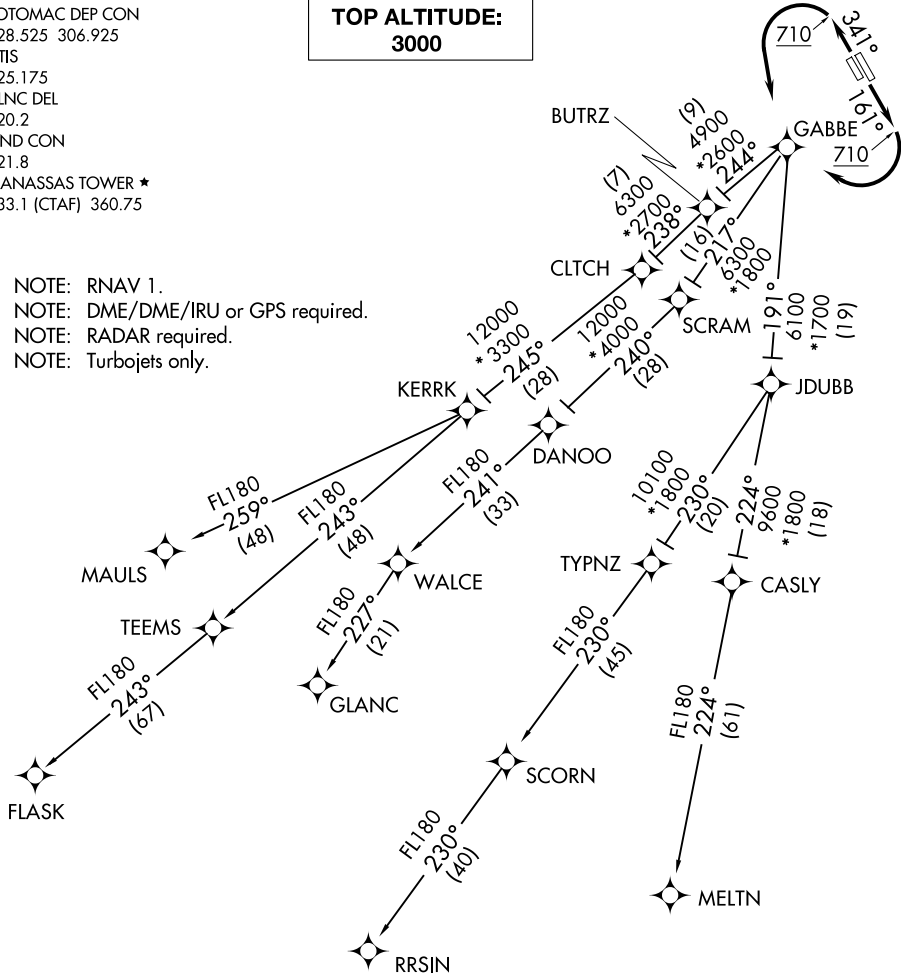
MANASSAS RGNL/HARRY P DAVIS FLD (HEF)

WASHINGTON, DC

POTOMAC DEP CON  
 128.525 306.925  
 ATIS  
 125.175  
 CLNC DEL  
 120.2  
 GND CON  
 121.8  
 MANASSAS TOWER ★  
 133.1 (CTAF) 360.75

**TOP ALTITUDE:  
 3000**

- NOTE: RNAV 1.
- NOTE: DME/DME/IRU or GPS required.
- NOTE: RADAR required.
- NOTE: Turbojets only.



### TAKEOFF MINIMUMS:

Rwys 16L/R, 34L/R: Standard with minimum climb  
 of 500' per NM to 710.

(NARRATIVE ON FOLLOWING PAGE)

NOTE: Chart not to scale.

# GABBE THREE DEPARTURE(RNAV)

(GABBE3.GABBE) 26MAR20

MANASSAS RGNL/HARRY P DAVIS FLD (HEF)  
 WASHINGTON, DC

NE-3, 20 MAR 2025 to 17 APR 2025

NE-3, 20 MAR 2025 to 17 APR 2025



DEPARTURE ROUTE DESCRIPTION

TAKEOFF RWY 16L/R: Climb on heading 161° to 710, then right turn direct GABBE, thence....

TAKEOFF RWY 34L/R: Climb on heading 341° to 710, then left turn direct GABBE, thence....

....on assigned transition. Maintain 3000. Expect clearance to filed altitude within 10 minutes after departure.

- FLASK TRANSITION (GABBE3.FLASK):
- GLANC TRANSITION (GABBE3.GLANC):
- MAULS TRANSITION (GABBE3.MAULS):
- MELTN TRANSITION (GABBE3.MELTN):
- RRSIN TRANSITION (GABBE3.RRSIN):

NE-3, 20 MAR 2025 to 17 APR 2025

NE-3, 20 MAR 2025 to 17 APR 2025