

# HIICH TWO DEPARTURE (RNAV)

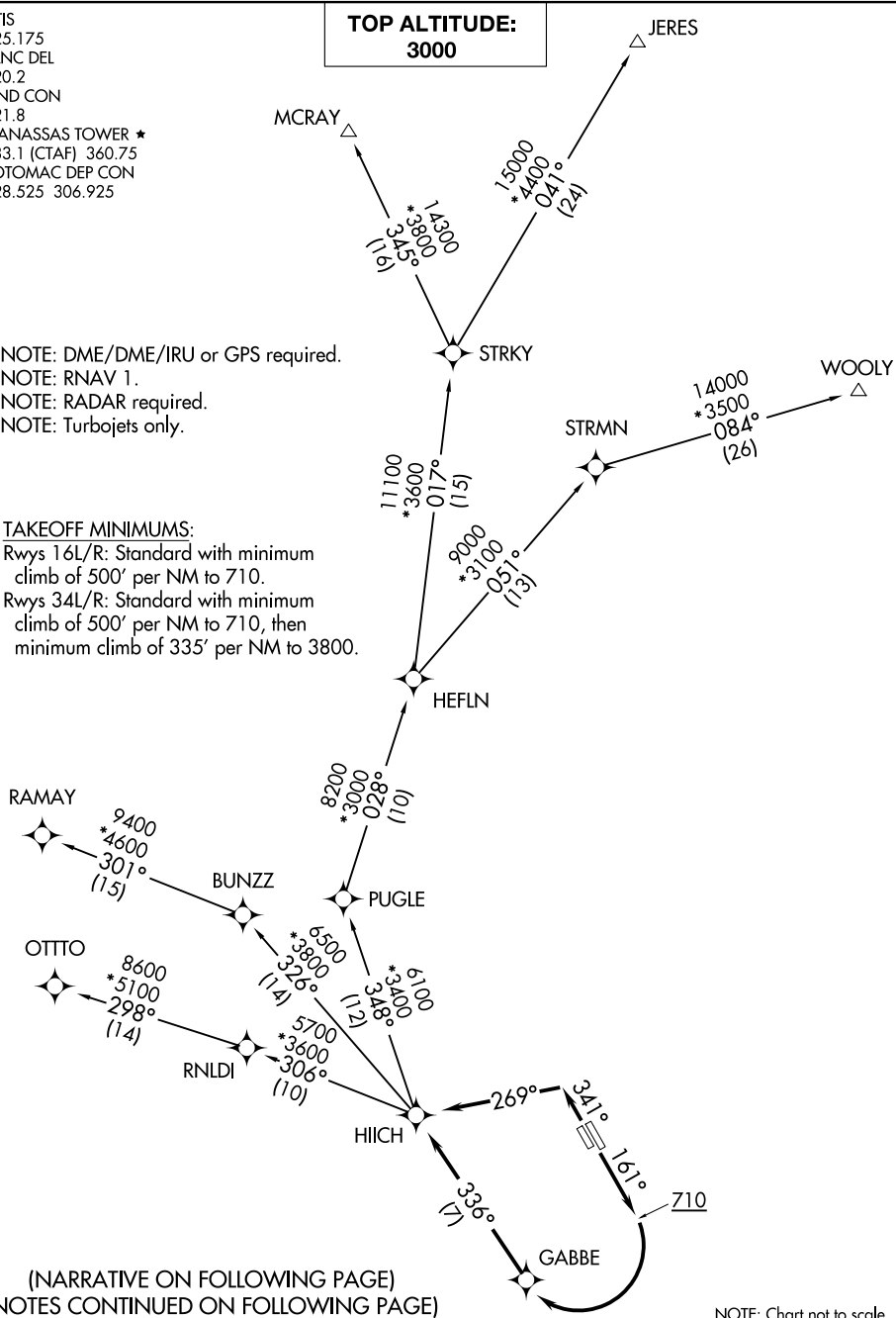
AL-5326

ATIS  
125.175  
CLNC DEL  
120.2  
GND CON  
121.8  
MANASSAS TOWER ★  
133.1 (CTAF) 360.75  
POTOMAC DEP CON  
128.525 306.925

**TOP ALTITUDE:  
3000**

NOTE: DME/DME/IRU or GPS required.  
NOTE: RNAV 1.  
NOTE: RADAR required.  
NOTE: Turbojets only.

**TAKEOFF MINIMUMS:**  
Rwys 16L/R: Standard with minimum  
climb of 500' per NM to 710.  
Rwys 34L/R: Standard with minimum  
climb of 500' per NM to 710, then  
minimum climb of 335' per NM to 3800.



(NARRATIVE ON FOLLOWING PAGE)  
(NOTES CONTINUED ON FOLLOWING PAGE)

NOTE: Chart not to scale.

# HIICH TWO DEPARTURE (RNAV)

NE-3, 20 MAR 2025 to 17 APR 2025

NE-3, 20 MAR 2025 to 17 APR 2025



DEPARTURE ROUTE DESCRIPTION

TAKEOFF RUNWAYS 16L/R: Climb heading 161° to 710, then right turn direct GABBE, then on track 336° to HIICH, thence . . . .

TAKEOFF RUNWAYS 34L/R: Climb heading 341° to intercept course 269° to HIICH, thence . . . .

. . . . on assigned transition. Maintain 3000. Expect clearance to filed altitude within 10 minutes after departure.

JERES TRANSITION (HIICH2.JERES)

MCRAY TRANSITION (HIICH2.MCRAY)

OTTO TRANSITION (HIICH2.OTTO)

RAMAY TRANSITION (HIICH2.RAMAY)

WOOLY TRANSITION (HIICH2.WOOLY)

NE-3, 20 MAR 2025 to 17 APR 2025

NE-3, 20 MAR 2025 to 17 APR 2025