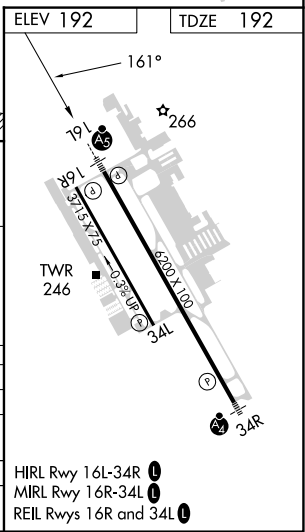
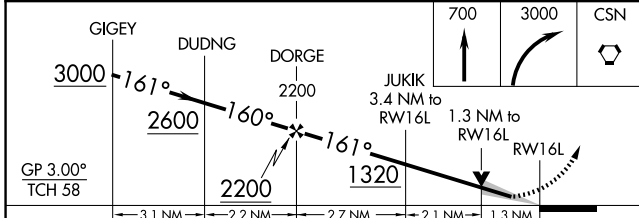
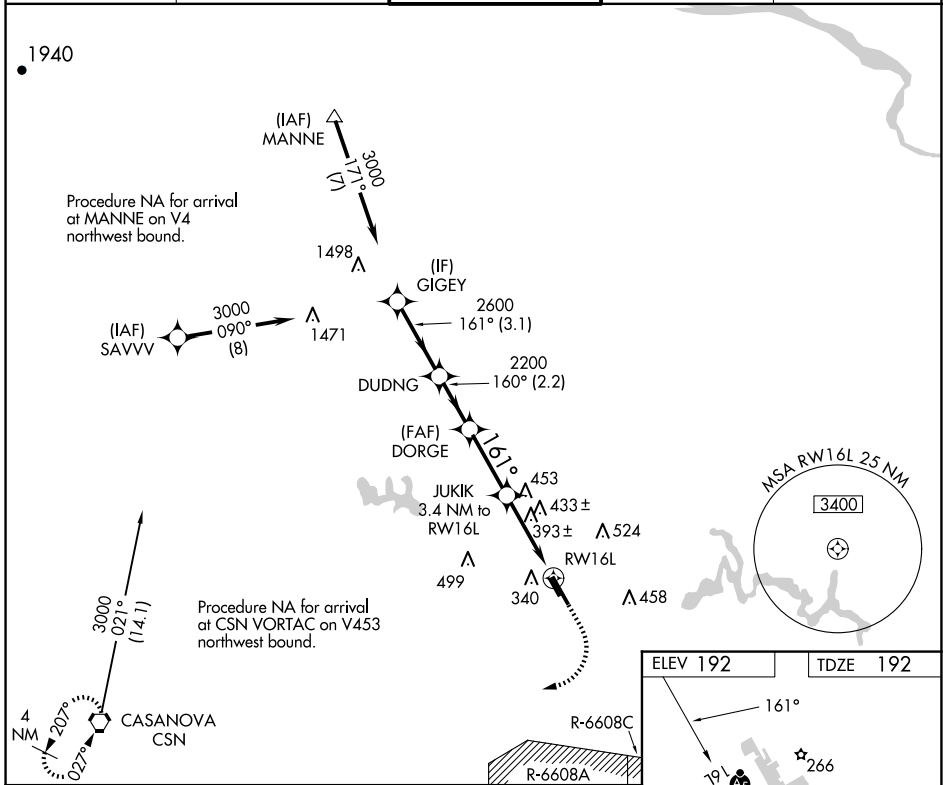


WAAS CH <b>70302</b> <b>W16A</b>	APP CRS <b>161°</b>	Rwy ldg TDZE <b>192</b> Apt Elev <b>192</b>
--	------------------------	---

# RNAV (GPS) RWY 16L

MANASSAS RGNL/HARRY P DAVIS FLD (HEF)

RNP APCH - GPS.		MALSRL	MISSED APPROACH: Climb to 700 then climbing right turn to 3000 direct CSN VORTAC and hold.	
<p>▼ For uncompensated Baro-VNAV systems, LNAV/VNAV NA below -15°C or above 54°C. For inop ALS, increase LNAV Cat C/D visibility to 1½ SM.</p>				
ATIS <b>125.175</b>	POTOMAC APP CON <b>128.525 306.925</b>	MANASSAS TOWER ★ <b>133.1 (CTAF) 0 360.75</b>	GND CON <b>121.8</b>	CLNC DEL <b>120.2</b>



CATEGORY	A	B	C	D
LPV DA		442-½	250 (300-½)	
LNAV/VNAV DA		635-7/8	443 (500-7/8)	
LNAV MDA	660-½	468 (500-½)	660-1	468 (500-1)
Ⓢ CIRCLING	720-1 528 (600-1)	740-1 548 (600-1)	840-1¾ 648 (700-1¾)	880-2¼ 688 (700-2¼)

NE-3, 20 MAR 2025 to 17 APR 2025

NE-3, 20 MAR 2025 to 17 APR 2025