

LOC I-GLR 111.1	APP CRS 096°	Rwy ldg 6579 TDZE 1321 Apt Elev 1328
---------------------------	------------------------	--


ILS or LOC RWY 9

GAYLORD RGNL (G.L.R.)

ADF required. RADAR required for procedure entry.

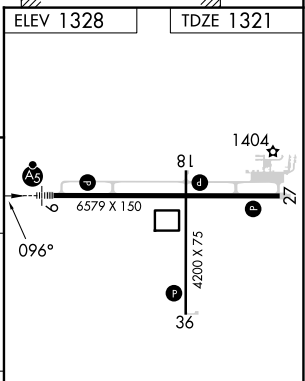
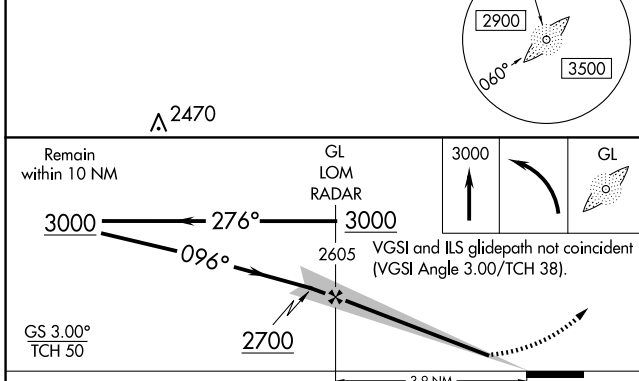
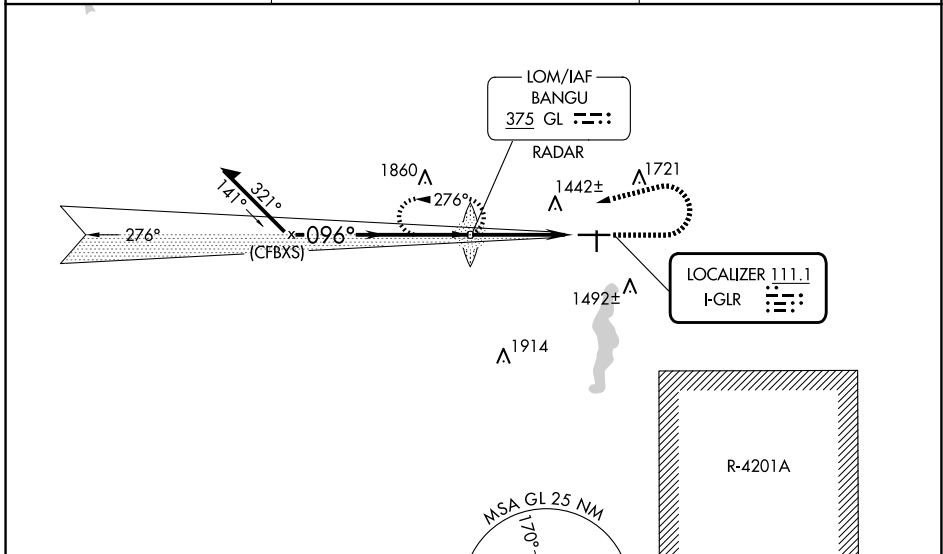
▽ Circling Rwy 18, 36 NA at night. When local altimeter setting not received, use GOV altimeter setting and increase S-ILS 9 DA to 1591 feet; increase all MDAs 80 feet and S-LOC 9 visibility Cat C and D 3/8 SM, and Circling visibility Cat C and D 1/4 SM. For inop ALS when using GOV altimeter setting, increase S-ILS 9 all Cats visibility to 7/8 SM and S-LOC 9 Cats C and D visibility to 1 3/4 SM. For inop ALS, increase S-LOC 9 Cats C and D visibility 3/8 SM.

MALSR



MISSED APPROACH: Climb to 3000 then left turn direct BANGU LOM and hold.

ASOS 118.375	MINNEAPOLIS CENTER 134.6 354.05	UNICOM 122.8 (CTAF) 0
------------------------	---	---------------------------------



CATEGORY	A	B	C	D
S-ILS 9	1521-1/2 200 (200-1/2)			
S-LOC 9	1860-1/2	539 (600-1/2)	1860-1	539 (600-1)
C CIRCLING	1860-1 532 (600-1)	1940-1 612 (700-1)	2040-2 712 (800-2)	2040-2 1/4 712 (800-2 1/4)

HIRL Rwy 9-27	0
MIRL Rwy 18-36	0
REIL Rws 18, 27 and 36	0
FAF to MAP 3.9 NM	
Knots	60 90 120 150 180
Min:Sec	3:54 2:36 1:57 1:34 1:18

EC-1, 20 MAR 2025 to 17 APR 2025

EC-1, 20 MAR 2025 to 17 APR 2025