


WAAS CH <b>97427</b> <b>W09A</b>	APP CRS <b>096°</b>	Rwy Idg TDZE Apt Elev	<b>6579</b> <b>1321</b> <b>1328</b>
--	------------------------	-----------------------------	---

# RNAV (GPS) RWY 9

GAYLORD RGNL (G.L.R.)

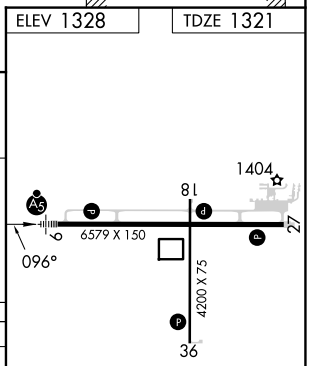
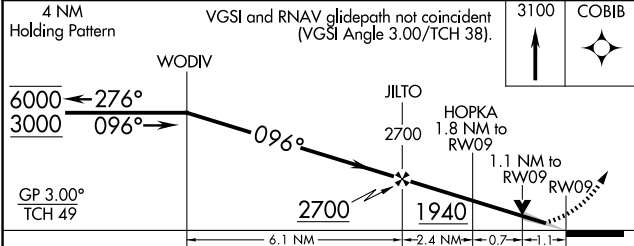
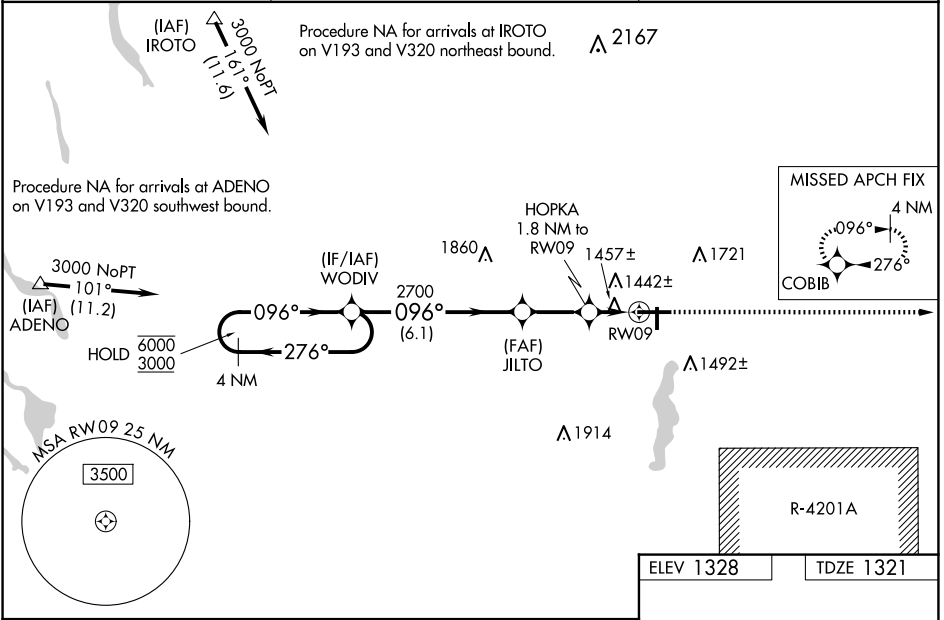
RNP APCH - GPS.

▼ Circling Rwy 18, 36 NA at night. Baro-VNAV and VDP NA when using GOV altimeter setting. For uncompensated Baro-VNAV systems, LNAV/VNAV NA below -21° C or above 54° C.  
 ▲ Inoperative table does not apply to LPV. When local altimeter setting not received, use GOV altimeter setting: increase LPV DA to 1591 feet; increase LNAV/VNAV DA to 1790 feet and all visibilities ½ SM; increase all MDAs 80 feet and LNAV and Circling visibility Cats C and D ½ SM. For inoperative ALS when using GOV altimeter setting, increase LNAV/VNAV visibility all Cats to 1 ½ SM and LNAV visibility Cats C and D to 1 ½ SM.

MALSR 

MISSED APPROACH: Climb to 3100 direct COBIB and hold.

ASOS <b>118.375</b>	MINNEAPOLIS CENTER <b>134.6 354.05</b>	UNICOM <b>122.8 (CTAF) 0</b>
------------------------	---	---------------------------------



CATEGORY	A	B	C	D
LPV DA		1521-¾	200 (200-¾)	
LNAV/VNAV DA		1720-¾	399 (400-¾)	
LNAV MDA		1720-¾	399 (400-¾)	
CIRCLING	1840-1 512 (600-1)	1940-1 612 (700-1)	2040-2 712 (800-2)	2080-2½ 752 (800-2½)

REIL Rwy 18, 27 and 36 **0**

MIRL Rwy 18-36 **0**

HIRL Rwy 9-27 **0**

EC-1, 20 MAR 2025 to 17 APR 2025

EC-1, 20 MAR 2025 to 17 APR 2025