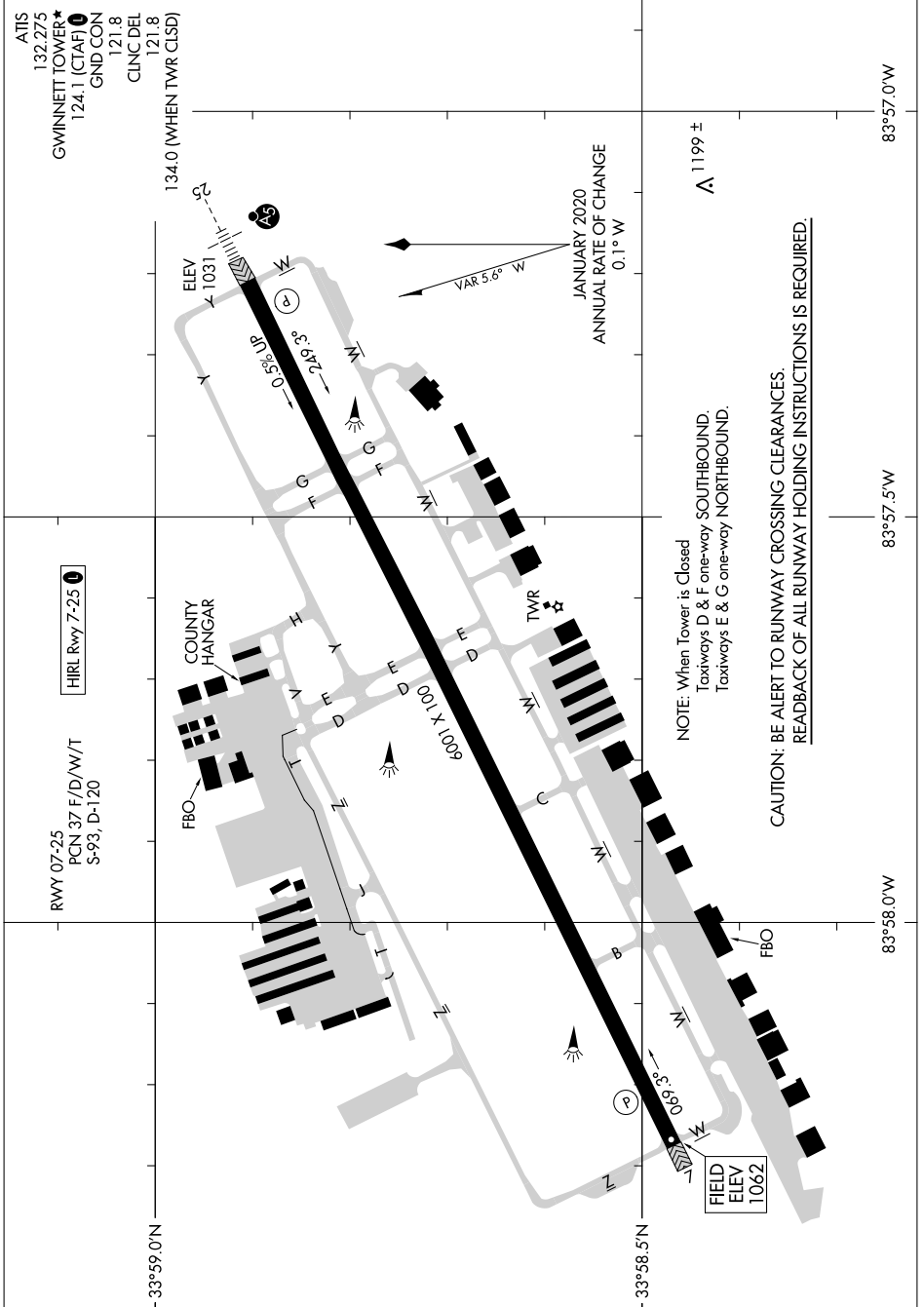


AL-5385 (FAA)

SE-4, 20 MAR 2025 to 17 APR 2025



ATIS 132.275
 GWINNETT TOWER* 124.1 (CTAF)
 GND CON 121.8
 CLNC DEL 121.8
 134.0 (WHEN TWR CLSD)

HIRL Rwy 7-25

RWY 07-25
 PCN 37 F/D/W/T
 S-93, D-120

COUNTY HANGAR

FBO

TWR

FBO

NOTE: When Tower is Closed
 Taxiways D & F one-way SOUTHBOUND.
 Taxiways E & G one-way NORTHBOUND.

CAUTION: BE ALERT TO RUNWAY CROSSING CLEARANCES.
 READBACK OF ALL RUNWAY HOLDING INSTRUCTIONS IS REQUIRED.

▲ 1199 ±

JANUARY 2020
 ANNUAL RATE OF CHANGE
 0.1° W

VAR 5.6° W

ELEV 1031

2.49°

0.58° IR

134.0

33°59.0'N

33°58.5'N

83°58.0'W

83°57.5'W

83°57.0'W

83°56.5'W

83°56.0'W

83°55.5'W

83°55.0'W

83°54.5'W

83°54.0'W

83°53.5'W

83°53.0'W

83°52.5'W

83°52.0'W

83°51.5'W

83°51.0'W

83°50.5'W

83°50.0'W

SE-4, 20 MAR 2025 to 17 APR 2025