

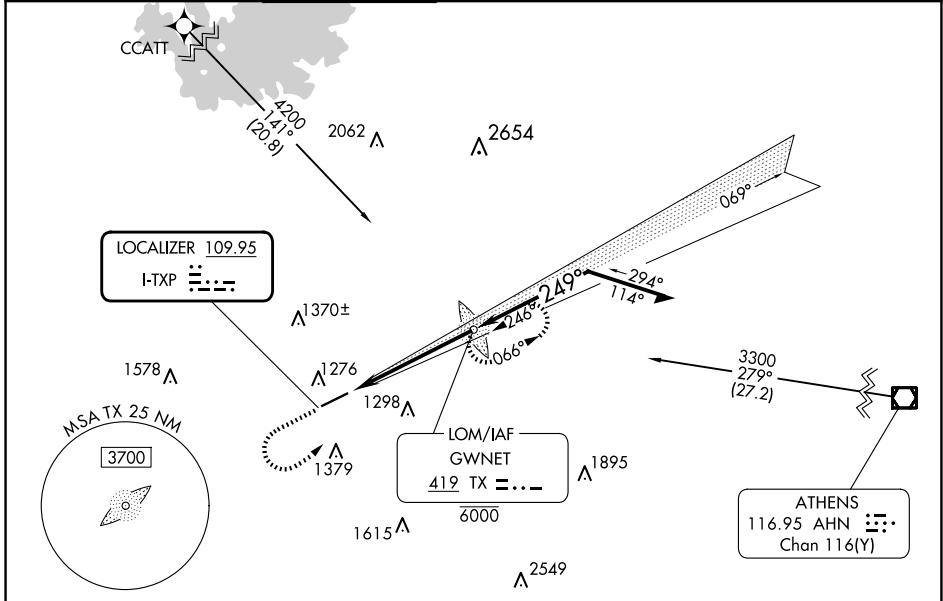
LOC I-TXP 109.95	APP CRS 249°	Rwy Idg TDZE Apt Elev 6001 1039 1062
----------------------------	------------------------	--

ILS or LOC RWY 25

GWINNETT COUNTY/BRISCOE FLD (LZU)

From CCATT: RNAV 1-GPS required.		MALSR 	MISSED APPROACH: Climb to 2400 then climbing left turn to 3100 direct GWINNET LOM and hold.
ADF required.			
Autopilot coupled approach NA below 1700. Inop table does not apply to S-ILS 25.			

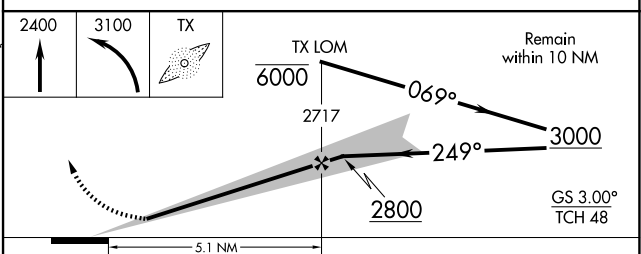
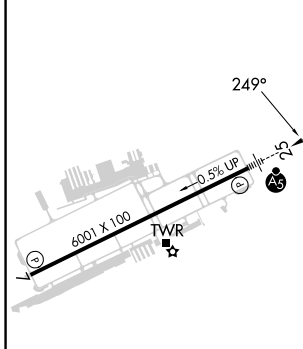
ATIS 132.275	ATLANTA APP CON 126.975 239.275	GWINNETT TOWER * 124.1 (CTAF)	GND CON 121.8	CLNC DEL 121.8	CLNC DEL 134.0 (When twr closed)	UNICOM 123.05
------------------------	---	---	-------------------------	--------------------------	---	-------------------------



SE-4, 20 MAR 2025 to 17 APR 2025

SE-4, 20 MAR 2025 to 17 APR 2025

ELEV 1062	TDZE 1039
-----------	-----------



HIRL Rwy 7-25	FAF to MAP 5.1 NM					
	Knots	60	90	120	150	180
	Min:Sec	5:06	3:24	2:33	2:02	1:42
<input checked="" type="checkbox"/> CIRCLING	1640-1	578 (600-1)	200 (200-3/4)	1500-1	461 (500-1)	638 (700-2)