

LOC/DME I-RVS <b>109.95</b> Chan <b>36 (Y)</b>	APP CRS <b>010°</b>	Rwy Idg TDZE Apt Elev	<b>5101</b> <b>626</b> <b>638</b>
------------------------------------------------------	------------------------	-----------------------------	-----------------------------------------

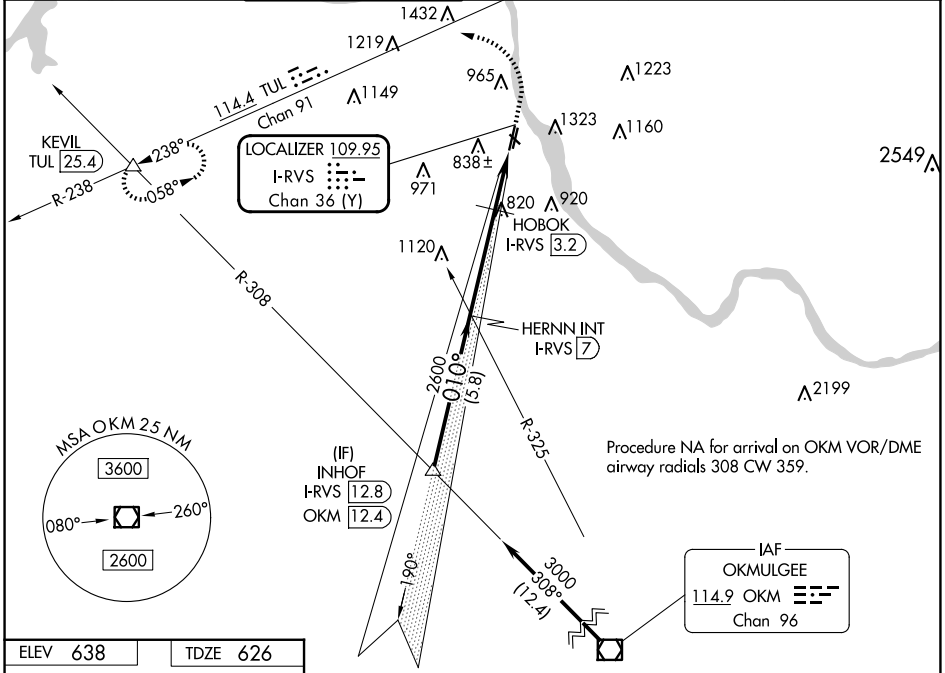
# ILS or LOC RWY 1L

TULSA RIVERSIDE (RVS)

**⚠** Circling NA northeast of Rwsy 31 and 19L.

MISSED APPROACH: Climb to 1500 then climbing left turn to 2600 on heading 280° and TUL VORTAC R-238 to KEVIL INT/TUL 25.4 DME and hold.

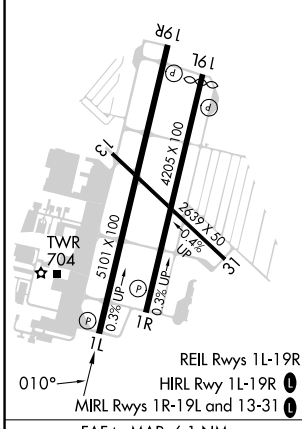
ATIS <b>126.5</b>	TULSA APP CON <b>134.7</b>	RIVERSIDE TOWER * <b>120.3 (CTAF) 0</b>	GND CON <b>121.7</b>	CLNC DEL <b>124.5</b>	UNICOM <b>122.95</b>
----------------------	-------------------------------	--------------------------------------------	-------------------------	--------------------------	-------------------------



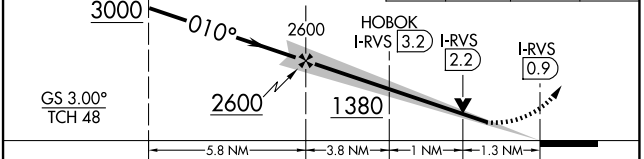
SC-1, 20 MAR 2025 to 17 APR 2025

SC-1, 20 MAR 2025 to 17 APR 2025

ELEV 638	TDZE 626
----------	----------



INHOE I-RVS 12.8	HERNN INT I-RVS 7	1500	2600	TUL R-238	KEVIL
3000	2600	↑	hdg 280°	△	
GS 3.00° TCH 48	2600				



CATEGORY	A	B	C	D
S-ILS 1L	826- <sup>3</sup> / <sub>4</sub>		200 (200- <sup>3</sup> / <sub>4</sub> )	
S-LOC 1L	1380-1 754 (800-1)	1380-1 <sup>1</sup> / <sub>4</sub> 754 (800-1 <sup>1</sup> / <sub>4</sub> )	1380-2	754 (800-2)
<b>CIRCLING</b>	1380-1 742 (800-1)	1380-1 <sup>1</sup> / <sub>4</sub> 742 (800-1 <sup>1</sup> / <sub>4</sub> )	1380-2 <sup>1</sup> / <sub>4</sub> 742 (800-2 <sup>1</sup> / <sub>4</sub> )	1380-2 <sup>1</sup> / <sub>2</sub> 742 (800-2 <sup>1</sup> / <sub>2</sub> )
HOBOK FIX MINIMUMS				
S-LOC 1L	1080-1	454 (500-1)	1080-1 <sup>3</sup> / <sub>8</sub>	454 (500-1 <sup>3</sup> / <sub>8</sub> )
<b>CIRCLING</b>	1260-1 622 (700-1)	1280-1 642 (700-1)	1280-1 <sup>3</sup> / <sub>4</sub> 642 (700-1 <sup>3</sup> / <sub>4</sub> )	1380-2 <sup>1</sup> / <sub>2</sub> 742 (800-2 <sup>1</sup> / <sub>2</sub> )

FAF to MAP 6.1 NM					
Knots	60	90	120	150	180
Min:Sec	6:06	4:04	3:03	2:26	2:02