

WAAS CH <b>81939</b> <b>W19A</b>	APP CRS <b>190°</b>	Rwy Idg TDZE Apt Elev	<b>5101</b> <b>638</b> <b>638</b>
----------------------------------------	------------------------	-----------------------------	-----------------------------------------

# RNAV (GPS) RWY 19R

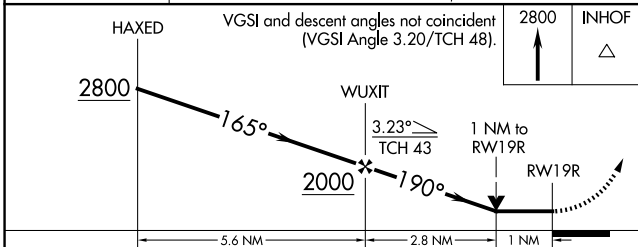
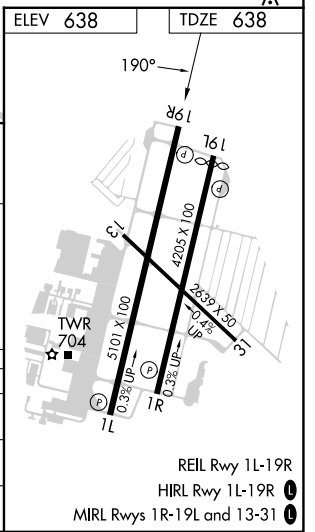
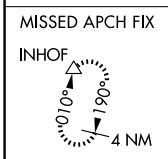
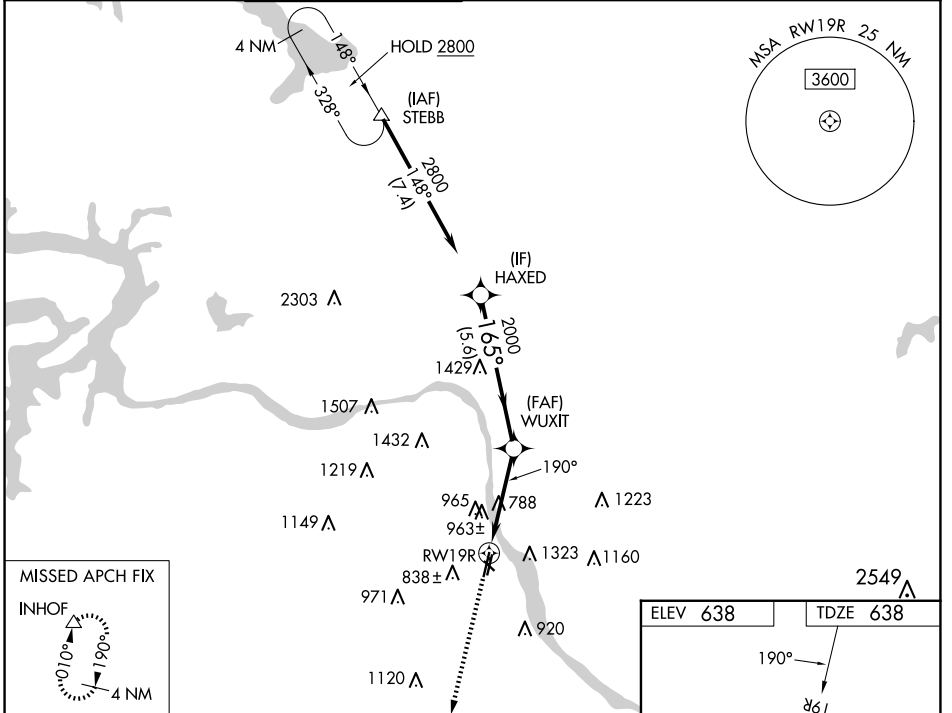
TULSA RIVERSIDE (RVS)

RNP APCH - GPS.

**⚠** Circling NA northeast of Rwy 31 and 19L. Rwy 19R helicopter visibility reduction below ¼ SM NA. VDP NA when using TUL altimeter setting. When local altimeter setting not received, use TUL altimeter setting: increase all MDAs 40 feet and LP visibility Cat C/D ¼ SM and Circling visibility Cat C ¼ SM.

MISSED APPROACH: Climb to 2800 direct INHOF and hold.

ATIS <b>126.5</b>	TULSA APP CON <b>134.7</b>	RIVERSIDE TOWER * <b>120.3</b> (CTAF) <b>0</b>	GND CON <b>121.7</b>	CLNC DEL <b>124.5</b>	UNICOM <b>122.95</b>
----------------------	-------------------------------	---------------------------------------------------	-------------------------	--------------------------	-------------------------



CATEGORY	A	B	C	D
LP MDA	1040-1	402 (500-1)	1040-1 1/8	402 (500-1 1/8)
LNVA MDA	1220-1	582 (600-1)	1220-1 3/4	582 (600-1 3/4)
<b>C</b> CIRCLING	1260-1 622 (700-1)	1280-1 642 (700-1)	1280-1 3/4 642 (700-1 3/4)	1380-2 1/2 742 (800-2 1/2)

SC-1, 20 MAR 2025 to 17 APR 2025

SC-1, 20 MAR 2025 to 17 APR 2025