

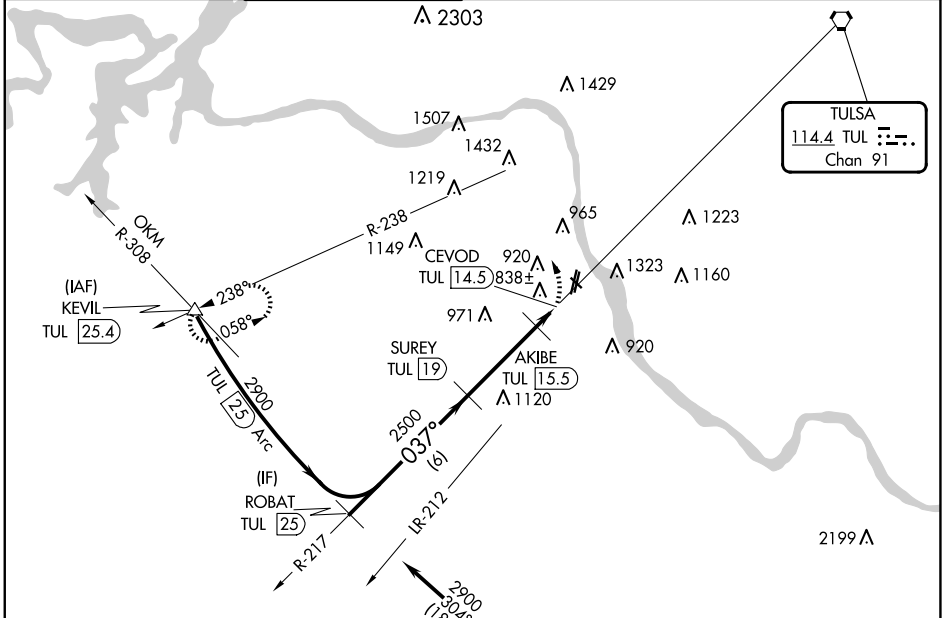
VORTAC TUL 114.4 Chan 91	APP CRS 037°	Rwy Idg TDZE Apt Elev N/A N/A 638
--	------------------------	---

VOR/DME-A
TULSA RIVERSIDE (RVS)

⚠ Circling NA northeast of Rws 31 and 19L. When local altimeter setting not received, use Tulsa Int'l altimeter setting and increase MDA 40 feet; increase Cat C/D visibilities ¼ mile.

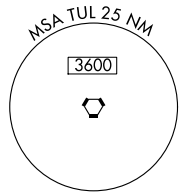
MISSED APPROACH: Climbing left turn to 2900 via heading 280° and TUL R-238 to KEVIL Int/TUL 25.4 DME and hold.

ATIS 126.5	TULSA APP CON 134.7	RIVERSIDE TOWER * 120.3 (CTAF) 0	GND CON 121.7	CLNC DEL 124.5	UNICOM 122.95
----------------------	-------------------------------	---	-------------------------	--------------------------	-------------------------

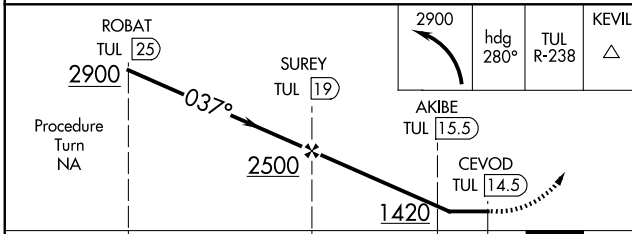
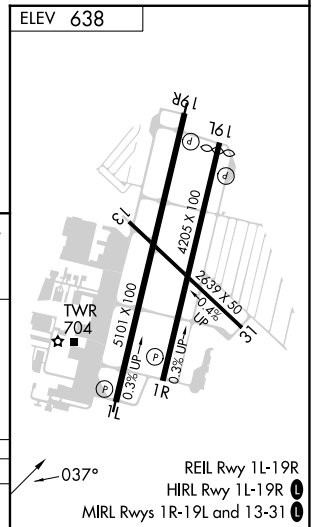


SC-1, 20 MAR 2025 to 17 APR 2025

SC-1, 20 MAR 2025 to 17 APR 2025



IAF OKMULGEE
114.9 OKM
Chan 96



CATEGORY	A	B	C	D
C CIRCLING	1260-1 622 (700-1)	1280-1 642 (700-1)	1280-1 ¾ 642 (700-1 ¾)	1380-2 ½ 742 (800-2 ½)