

SC-5, 20 MAR 2025 to 17 APR 2025

ARRIVAL ROUTE DESCRIPTION

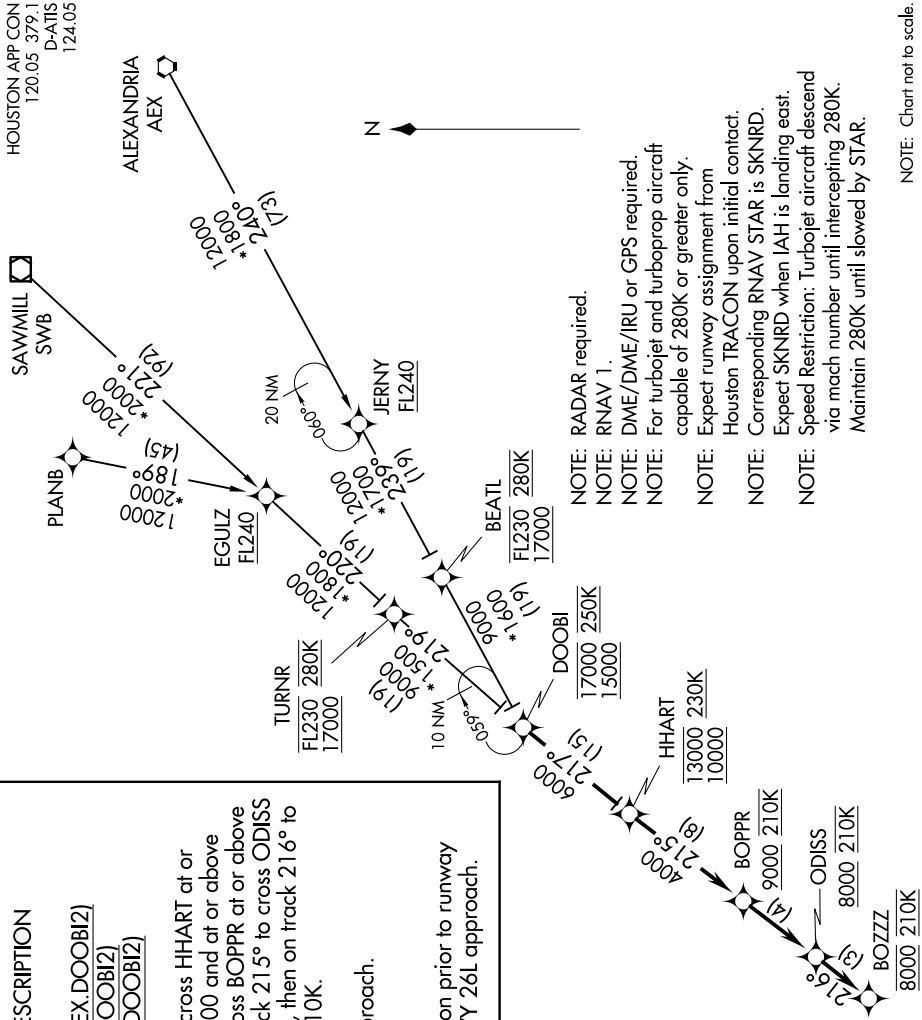
- ALEXANDRIA TRANSITION (AEX.DOOB12)
- PLANB TRANSITION (PLANB.DOOB12)
- SAWMILL TRANSITION (SWB.DOOB12)

From DOOBI on track 217° to cross HHART at or above 10000, at or below 13000 and at or above 230K, then on track 215° to cross BOPPR at or above 9000 and at 210K, then on track 215° to cross ODISS at or above 8000 and at 210K, then on track 216° to cross BOZZZ at 8000 and at 210K.

Expect assigned instrument approach.

LOST COMMUNICATIONS

In the event of lost communication prior to runway assignment, execute the ILS RWY 26L approach.



HOUSTON APP CON  
120.05 379.1  
D-ATIS  
124.05

- NOTE: RADAR required.
- NOTE: RNAV 1.
- NOTE: DME/DME/IRU or GPS required.
- NOTE: For turbojet and turboprop aircraft capable of 280K or greater only.
- NOTE: Expect runway assignment from Houston TRACON upon initial contact.
- NOTE: Corresponding RNAV STAR is SKNRD.
- NOTE: Expect SKNRD when IAH is landing east.
- NOTE: Speed Restriction: Turbojet aircraft descend via mach number until intercepting 280K. Maintain 280K until slowed by STAR.

NOTE: Chart not to scale.

SC-5, 20 MAR 2025 to 17 APR 2025