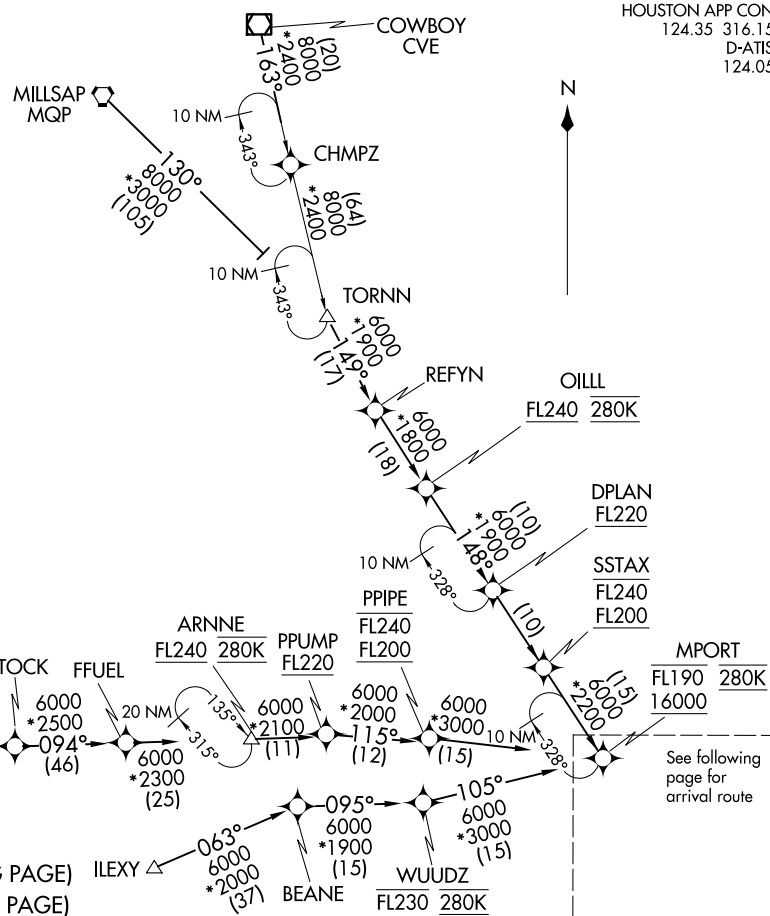


DRLLR FIVE ARRIVAL (RNAV) Transition Routes
 (MPORT, DRLLR5) 26MAY16
 GEORGE BUSH INTCNTL/HOUSTON (IAH)
 HOUSTON, TEXAS

(MPORT, DRLLR5) 21112 AI-5461 (FAA)
 DRLLR FIVE ARRIVAL (RNAV) Transition Routes
 GEORGE BUSH INTCNTL/HOUSTON (IAH)
 HOUSTON, TEXAS

HOUSTON APP CON
 124.35 316.15
 D-ATIS
 124.05



- COWBOY TRANSITION (CVE.DRLLR5):
- DIESEL TRANSITION (DIESEL.DRLLR5):
- ILEXY TRANSITION (ILEXY.DRLLR5): Austin Terminal Area Departures only.
- MILLSAP TRANSITION (MQP.DRLLR5):
- OILL TRANSITION (OILL.DRLLR5):
- TORN TRANSITION (TORN.DRLLR5):

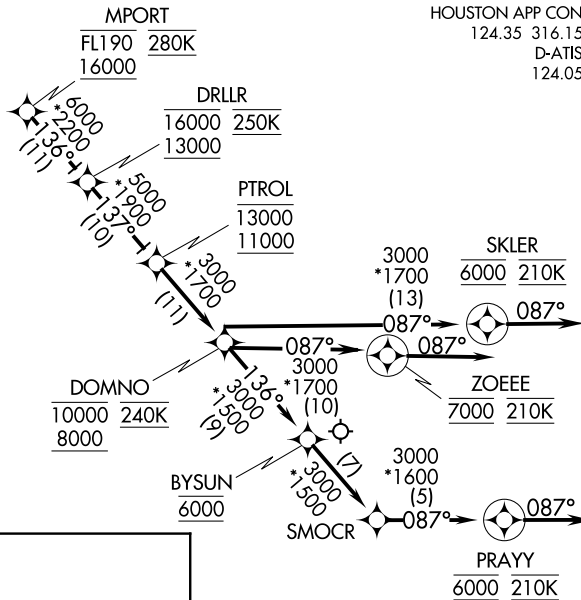
- NOTE: RADAR required.
- NOTE: RNAV 1.
- NOTE: DME/DME/IRU or GPS required.
- NOTE: Turbojet and turboprop aircraft capable of 280K or greater only.
- NOTE: Fly the Runway 26R transition; Houston Approach control may assign a different transition on initial contact.
- NOTE: Corresponding RNAV STAR is GUSHR. Expect GUSHR when IAH is landing east.
- NOTE: Turbojet aircraft descend via mach number until intercepting 280K. Maintain 280K until slowed by the STAR.

(NOTES ON THE FOLLOWING PAGE)
 (NARRATIVE ON FOLLOWING PAGE)

NOTE: Chart not to scale.

DRILLER FIVE ARRIVAL (RNAV) Arrival Routes
 (MPORT, DRLLR5) 26MAY16
 GEORGE BUSH INTCNL/HOUSTON (IAH)
 HOUSTON, TEXAS

- NOTE: RADAR required.
- NOTE: RNAV 1.
- NOTE: DME/DME/IRU or GPS required.
- NOTE: Turbojet and turboprop aircraft capable of 280K or greater only.
- NOTE: Fly the Runway 26R transition; Houston Approach control may assign a different transition on initial contact.
- NOTE: Corresponding RNAV STAR is GUSHR. Expect GUSHR when IAH is landing east.
- NOTE: Turbojet aircraft descend via mach number until intercepting 280K. Maintain 280K until slowed by the STAR.



HOUSTON APP CON
 124.35 316.15
 D-ATIS
 124.05

ARRIVAL ROUTE DESCRIPTION

From MPORT on track 136° to cross DRLLR between 13000 and 16000 and at 250K, then on track 137° to cross PTROL between 11000 and 13000, then on track 137° to cross DOMNO between 8000 and 10000 and at 240K.

LANDING RUNWAY 26L: From DOMNO on track 087° to cross ZOEEE at 7000 and at 210K, then on track 087°. Expect vectors to final approach course.

LANDING RUNWAY 26R: From DOMNO on track 087° to cross SKLER at 6000 and at 210K, then on track 087°. Expect vectors to final approach course.

LANDING RUNWAY 27: From DOMNO on track 136° to cross BYSUN at 6000, then on track 136° to SMOCR, then on track 087° to cross PRAYY at 6000 and at 210K, then on track 087°. Expect vectors to final approach course.

NOTE: Chart not to scale.

(MPORT, DRLLR5) 21112 AI-5461 (FAA)
 DRILLER FIVE ARRIVAL (RNAV) Arrival Routes
 GEORGE BUSH INTCNL/HOUSTON (IAH)
 HOUSTON, TEXAS