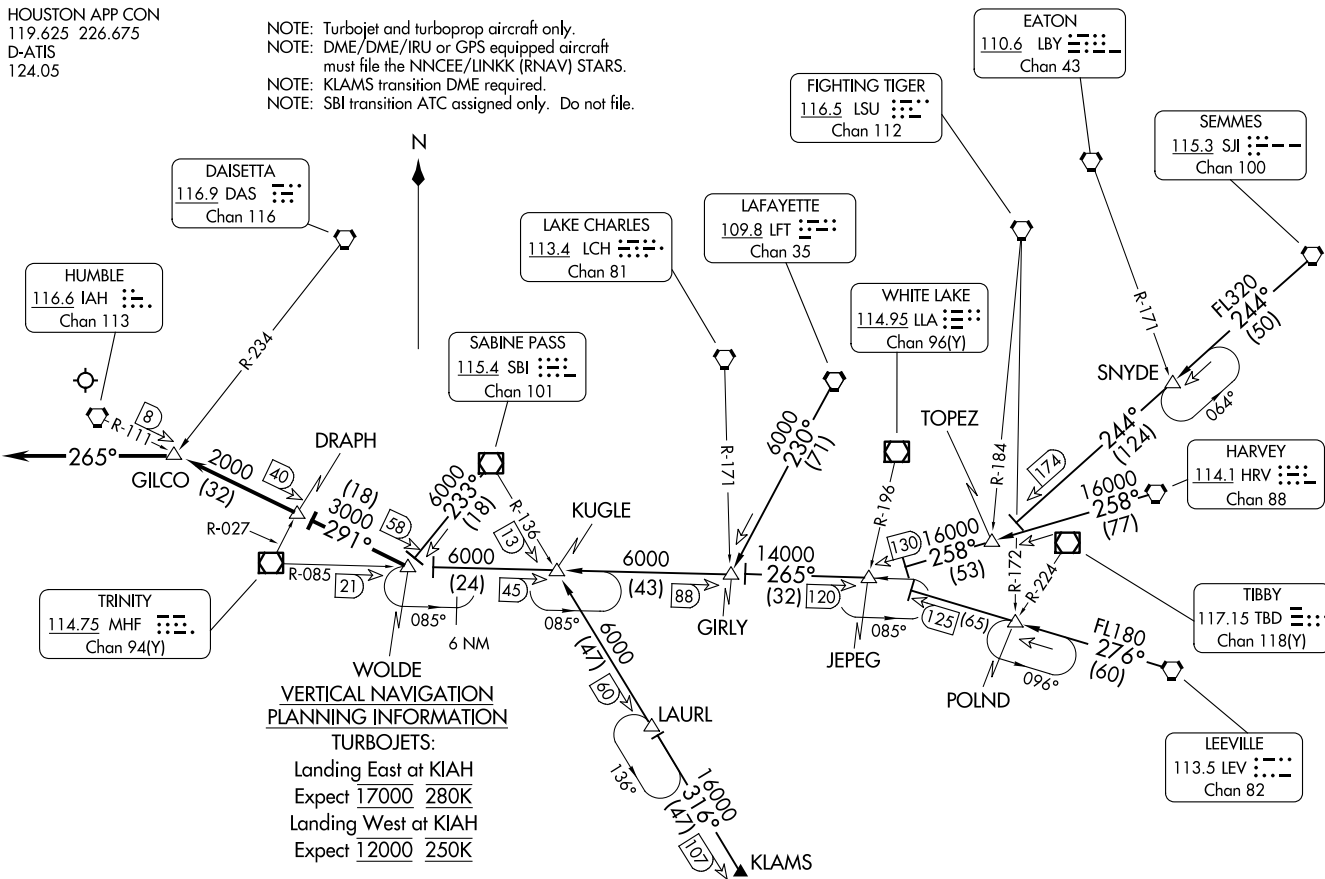


GILCO FIVE ARRIVAL
(WOLDE.GILCO5) 100CTT9

GEORGE BUSH INTCNL/HOUSTON (IAH)
HOUSTON, TEXAS

HOUSTON APP CON
119.625 226.675
D-ATIS
124.05

NOTE: Turbojet and turboprop aircraft only.
NOTE: DME/DME/IRU or GPS equipped aircraft
must file the NNCEE/LINKK (RNAV) STARS.
NOTE: KLAMS transition DME required.
NOTE: SBI transition ATC assigned only. Do not file.



Landing East at KIAH
Expect 17000 280K
Landing West at KIAH
Expect 12000 250K

(CONTINUED ON FOLLOWING PAGE)

NOTE: Chart not to scale.

(WOLDE.GILCO5) 24137
GILCO FIVE ARRIVAL

AL-5461 (FAA)

GEORGE BUSH INTCNL/HOUSTON (IAH)
HOUSTON, TEXAS

ARRIVAL ROUTE DESCRIPTION

HARVEY TRANSITION (HRV.GILCO5): From over HRV VORTAC on HRV R-258 to JEPEG, then on MHF R-085 to WOLDE. Thence

JEPEG TRANSITION (JEPEG.GILCO5): From over JEPEG on MHF R-085 to WOLDE. Thence

KLAMS TRANSITION (KLAMS.GILCO5): From over KLAMS on SBI R-136 to KUGLE, then on MHF R-085 to WOLDE. Thence

LAFAYETTE TRANSITION (LFT.GILCO5): From over LFT VORTAC on LFT R-230 to GIRLY, then on MHF R-085 to WOLDE. Thence

LEEVILLE TRANSITION (LEV.GILCO5): From over LEV VORTAC on LEV R-276 to JEPEG, then on MHF R-085 to WOLDE. Thence

SABINE PASS TRANSITION (SBI.GILCO5): From over SBI VOR/DME on SBI R-233 to WOLDE. Thence

SEMMES TRANSITION (SJI.GILCO5): From SJI VORTAC on SJI R-244 to TOPEZ, then on HRV R-258 to JEPEG, then on MHF R-085 to WOLDE. Thence

. . . .From over WOLDE on IAH R-111 to GILCO.

LANDING RUNWAYS 8L/R, 9:

From GILCO fly heading 265° for vectors to final approach course.

FOR ALL OTHER RUNWAYS:

Expect vectors to final approach course at or prior to GILCO.

SC-5, 20 MAR 2025 to 17 APR 2025

SC-5, 20 MAR 2025 to 17 APR 2025