

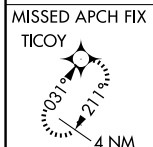
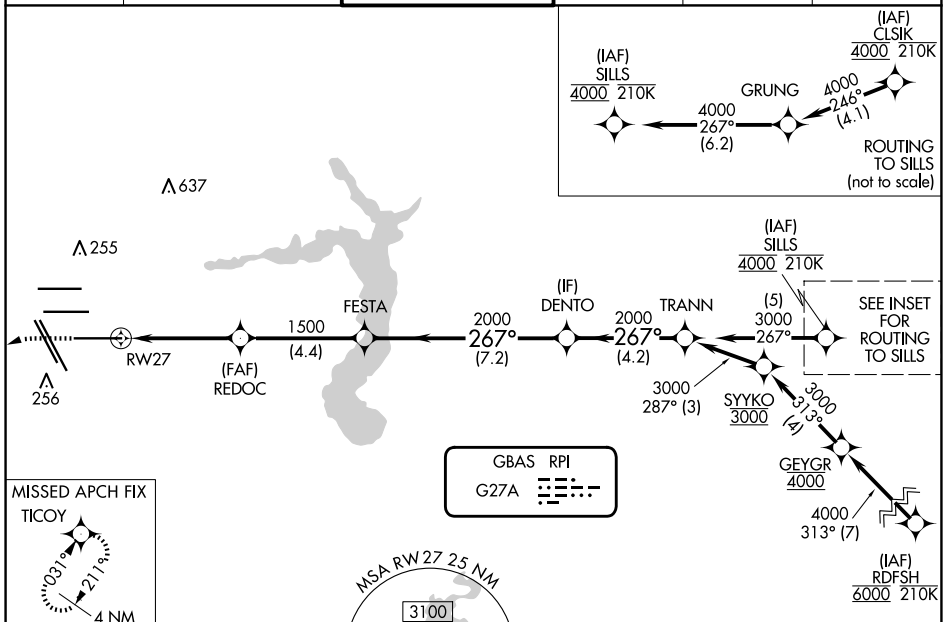
GBAS CH 22306 G27A	APP CRS 267°	Rwy Idg TDZE 86 Apt Elev 96	10000
--	------------------------	---	--------------

GLS RWY 27

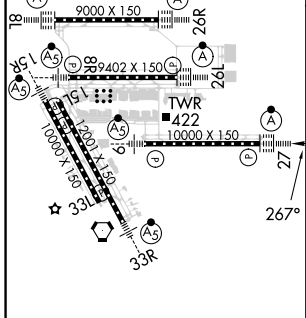
GEORGE BUSH INTCNL/HOUSTON (IAH)

RNP APCH - GPS.		ALSF-2 	MISSED APPROACH: Climb to 560 then climbing left turn to 3100 direct TICOY and hold.
Simultaneous approach authorized. Use of FD or AP required during simultaneous operations. Autopilot coupled approach NA below 286.			

D-ATIS 124.05	HOUSTON APP CON 120.05 379.1 EAST 124.35 316.15 WEST	HOUSTON TOWER 135.15 290.2	GND CON 118.575	CLNC DEL 128.1	CPDLC
-------------------------	--	--------------------------------------	---------------------------	--------------------------	-------



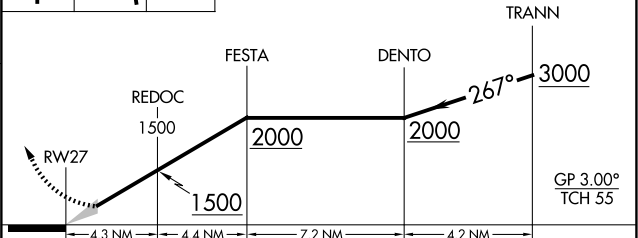
ELEV 96	D	TDZE 86
---------	----------	---------



TDZ/CL Rwy 8R, 8L, 15R, 26R, 26L, 27 and 33L
HIRL all Rwy

560 3100 TICOY

 VGSI and GLS glidepath not coincident (VGSI Angle 3.00/TCH 70).



CATEGORY	A	B	C	D
GLS DA	286/18 200 (200-1/2)			

SC-5, 20 MAR 2025 to 17 APR 2025

SC-5, 20 MAR 2025 to 17 APR 2025