

LOC/DME I-BZU <b>111.55</b> Chan 52 (Y)	APP CRS <b>087°</b>	Rwy Idg TDZE Apt Elev	<b>9000</b> <b>94</b> <b>96</b>
---	------------------------	-----------------------------	---------------------------------------

# ILS RWY 8L (SA CAT I)

## GEORGE BUSH INTCNL/HOUSTON (IAH)

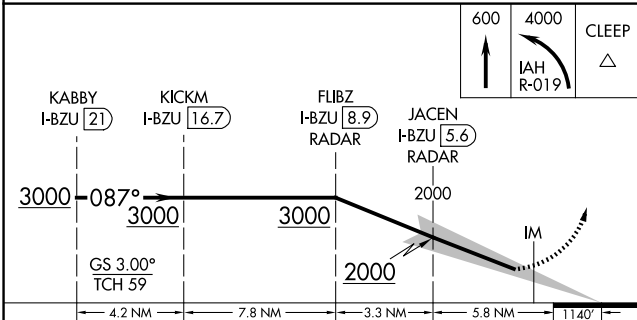
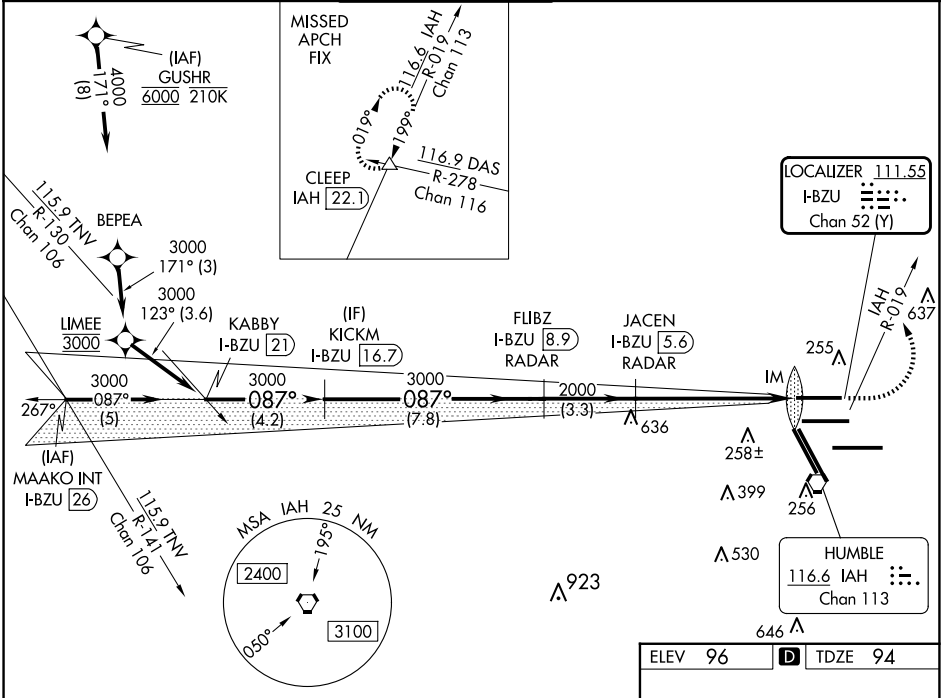
DME required. From GUSHR: RNAV 1-GPS required.

Simultaneous approach authorized with Rwy 8R and Rwy 9. Requires specific OPSPEC, MSPEC, or LOA approval and use of HUD to DH.

ALSF-2

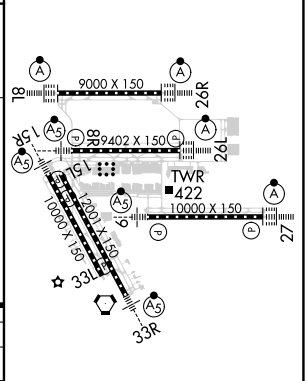
MISSED APPROACH: Climb to 600 then climbing left turn to 4000 on IAH VORTAC R-019 to CLEEP INT/IAH 22.1 DME and hold.

ATIS <b>124.05</b>	HOUSTON APP CON <b>120.05 379.1</b> EAST <b>124.35 316.15</b> WEST	HOUSTON TOWER <b>120.725 290.2</b>	GND CON <b>118.575</b>	CLNC DEL <b>128.1</b>	CPDLC
-----------------------	--	---------------------------------------	---------------------------	--------------------------	-------



CATEGORY	A	B	C	D
S-ILS 8L		RA 158/14	150 DA 244	

ELEV 96	TDZE 94
---------	---------



**SA CATEGORY I ILS - SPECIAL AIRCREW & AIRCRAFT CERTIFICATION REQUIRED**

TDZ/CL Rwy's 8R, 8L, 15R, 26R, 26L, 27 and 33L  
HIRL all Rwy's

SC-5, 20 MAR 2025 to 17 APR 2025

SC-5, 20 MAR 2025 to 17 APR 2025