

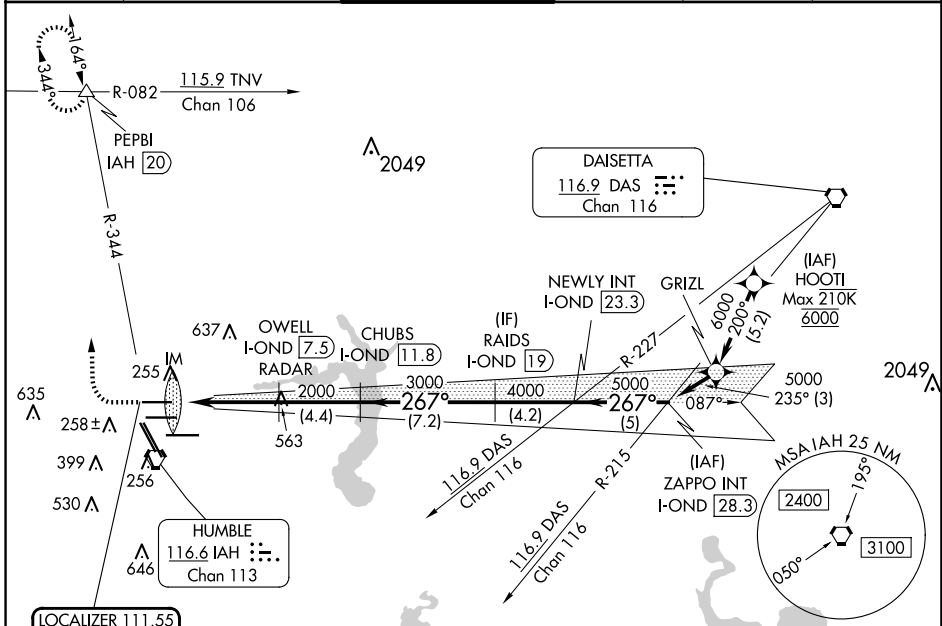
LOC/DME I-OND 111.55 Chan 52 (Y)	APP CRS 267°	Rwy Idg 9000 TDZE 95 Apt Elev 96
--	------------------------	---

ILS or LOC RWY 26R

GEORGE BUSH INTCNL/HOUSTON (IAH)

DME required. From HOO TI: RNAV 1-GPS required.	ALSF-2 	MISSED APPROACH: Climb to 600 then climbing right turn to 3000 on IAH VORTAC R-344 to PEPBI INT/IAH 20 DME and hold.
Simultaneous approach authorized with Rwy 26L and Rwy 27. For inop ALS, increase S-ILS 26R Cat E visibility to RVR 4000, and S-LOC 26R Cat C/D/E visibility to 1 1/8 SM.		

D-ATIS 124.05	HOUSTON APP CON 120.05 379.1 EAST 124.35 316.15 WEST	HOUSTON TOWER 120.725 290.2	GND CON 118.575	CLNC DEL 128.1	CPDLC
-------------------------	--	---------------------------------------	---------------------------	--------------------------	-------

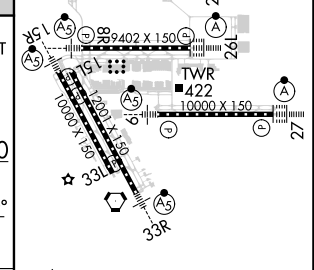
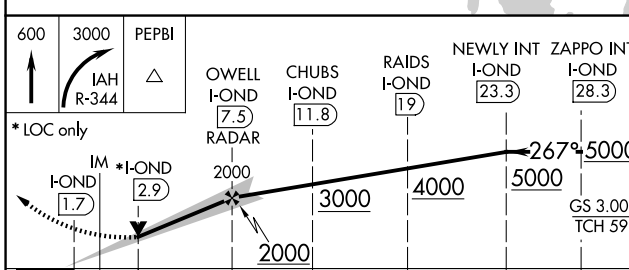


SC-5, 20 MAR 2025 to 17 APR 2025

SC-5, 20 MAR 2025 to 17 APR 2025

LOCALIZER 111.55 I-OND Chan 52 (Y)
--

ELEV 96	D TDZE 95
----------------	-------------------------



TDZ/CL Rws 8R, 8L, 15R, 26R, 26L, 27 and 33L	HIRL all Rws
FAF to MAP 5.8 NM	
Knots	60 90 120 150 180
Min:Seq	5:48 3:52 2:54 2:19 1:56