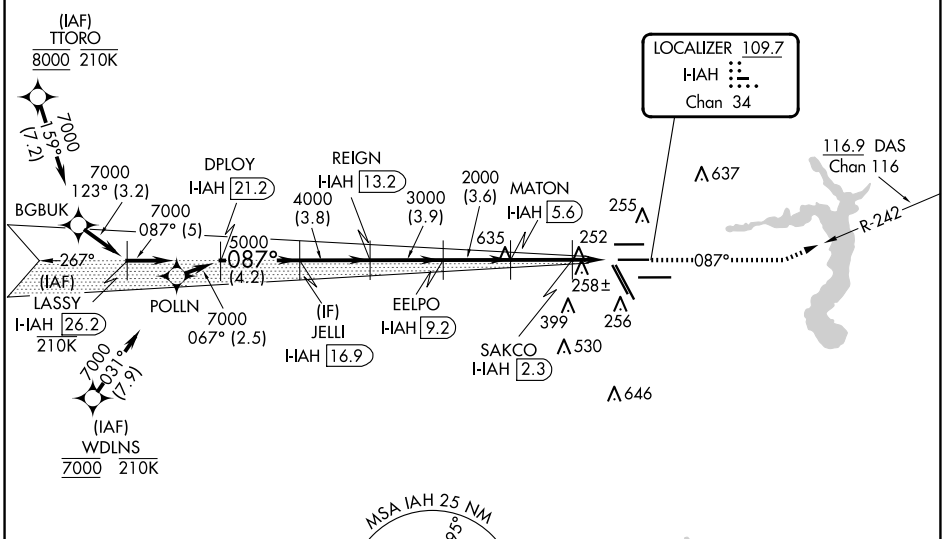


LOC/DME I-IAH 109.7 Chan 34	APP CRS 087°	Rwy Idg 9402 TDZE 95 Apt Elev 96
---	------------------------	---

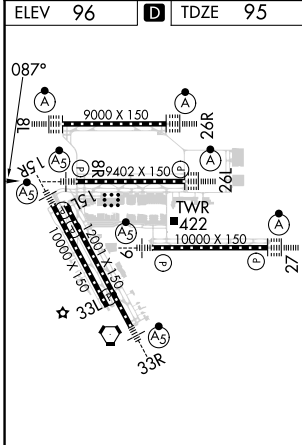
ILS or LOC RWY 8R
GEORGE BUSH INTCNL/HOUSTON (IAH)

RNAV 1-GPS or RADAR required for procedure entry, DME.		MALSR 	MISSED APPROACH: Climb to 3000 on heading 087° and on DAS VORTAC R-242 to DAS VORTAC and hold.
Simultaneous approach authorized. For inop ALS, increase S-LOC 8R Cat C/D/E visibility to 1 1/2 SM. For inop ALS, increase S-ILS 8R Cat E visibility to RVR 4000.			

D-ATIS 124.05	HOUSTON APP CON 120.05 379.1 EAST 124.35 316.15 WEST	HOUSTON TOWER 125.35 290.2	GND CON 118.575	CLNC DEL 128.1	CPDLC A 2049
-------------------------	--	--------------------------------------	---------------------------	--------------------------	-----------------



ELEV 96	D	TDZE 95
---------	----------	---------



TDZ/CL Rwy 8R, 8L, 15R, 26R, 26L, 27 and 33L
HIRL all Rwy

VGSi and ILS glidepath not coincident (VGSi Angle 3.00/TCH 72).		3000	DAS
		↑ hdg 087°	DAS R-242
		*LOC only.	
LASSY I-IAH 26.2	DPLY I-IAH 21.2	JELLI I-IAH 16.9	REIGN I-IAH 13.2
EELPO I-IAH 9.2	MATON I-IAH 5.6	SAKCO I-IAH 2.3	I-IAH DME ANTENNA
7000-087°		087°	
7000		5000	
4000		3000	
2000		*940	
-5 NM		-4.2 NM	
-3.8		-3.9	
-3.6		-3.3 NM	
-1.3 NM		1.2 NM	
CATEGORY	A	B	C
S-ILS 8R	295/18		200 (200-1/2)
S-LOC 8R	560/24	465 (500-1/2)	560/50 465 (500-1)

SC-5, 20 MAR 2025 to 17 APR 2025

SC-5, 20 MAR 2025 to 17 APR 2025