

(JCT1..JCT) 24137

GEORGE BUSH INTCNTL/HOUSTON (IAH)

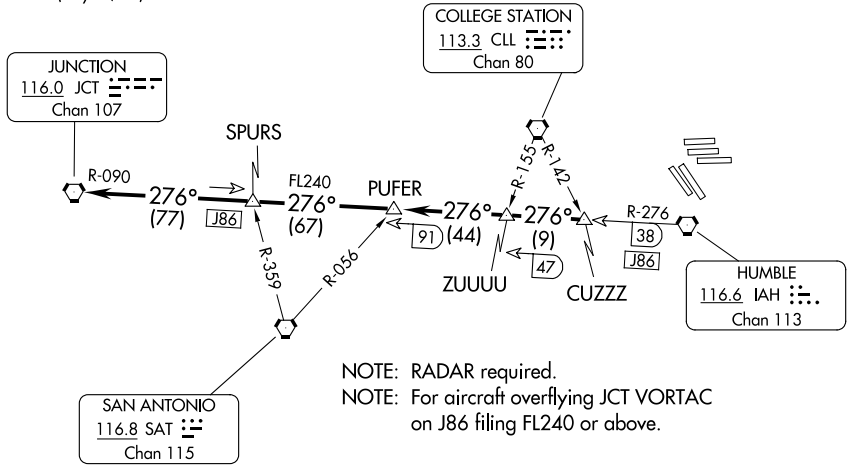
# JUNCTION ONE DEPARTURE

AL-5461 (FAA)

HOUSTON, TEXAS

D-ATIS 124.05  
 CLNC DEL 128.1  
 CPDLC  
 HOUSTON DEP CON  
 126.675 339.8  
 GND CON  
 118.575 (Rwys 8L/R, 26L/R, 9/27)  
 121.7 (Rwys 15L/R, 33L/R)  
 HOUSTON TOWER  
 120.725 290.2 (Rwys 8L/26R)  
 125.35 290.2 (Rwys 8R/26L)  
 127.3 288.25 (Rwys 15L/R, 33L/R)  
 135.15 290.2 (Rwys 9/27)

**TOP ALTITUDE:  
16000**



NOTE: RADAR required.  
 NOTE: For aircraft overflying JCT VORTAC  
 on J86 filing FL240 or above.

### TAKEOFF MINIMUMS

Rwys 8L/R, 9, 15L/R, 26L/R, 27, 33L/R: Standard.

NOTE: Chart not to scale.



### DEPARTURE ROUTE DESCRIPTION

**TAKEOFF ALL RUNWAYS:** Climb on assigned heading for RADAR vectors to CUZZZ INT. Maintain 16000. Expect filed altitude 10 minutes after departure. Thence . . . .

. . . . on IAH R-276 and JCT R-090 to JCT VORTAC.

# JUNCTION ONE DEPARTURE

(JCT1..JCT) 22JUN17

HOUSTON, TEXAS

GEORGE BUSH INTCNTL/HOUSTON (IAH)

SC-5, 20 MAR 2025 to 17 APR 2025

SC-5, 20 MAR 2025 to 17 APR 2025