

RNAV 1 - DME/DME/IRU or GPS.  
RADAR required.

HOUSTON APP CON  
119.625 226.675  
D-ATIS  
124.05

See following page for arrival routes.

LINKK  
FL200 280K  
17000

LINKK  
FL290 280K  
12000  
\*1300  
269°  
(18)

LINKK  
FL290 280K  
12000  
\*1300  
314°  
(18)

LINKK  
FL290 280K  
12000  
\*1300  
315°  
(22)

LINKK  
FL290 280K  
12000  
\*1300  
315°  
(22)

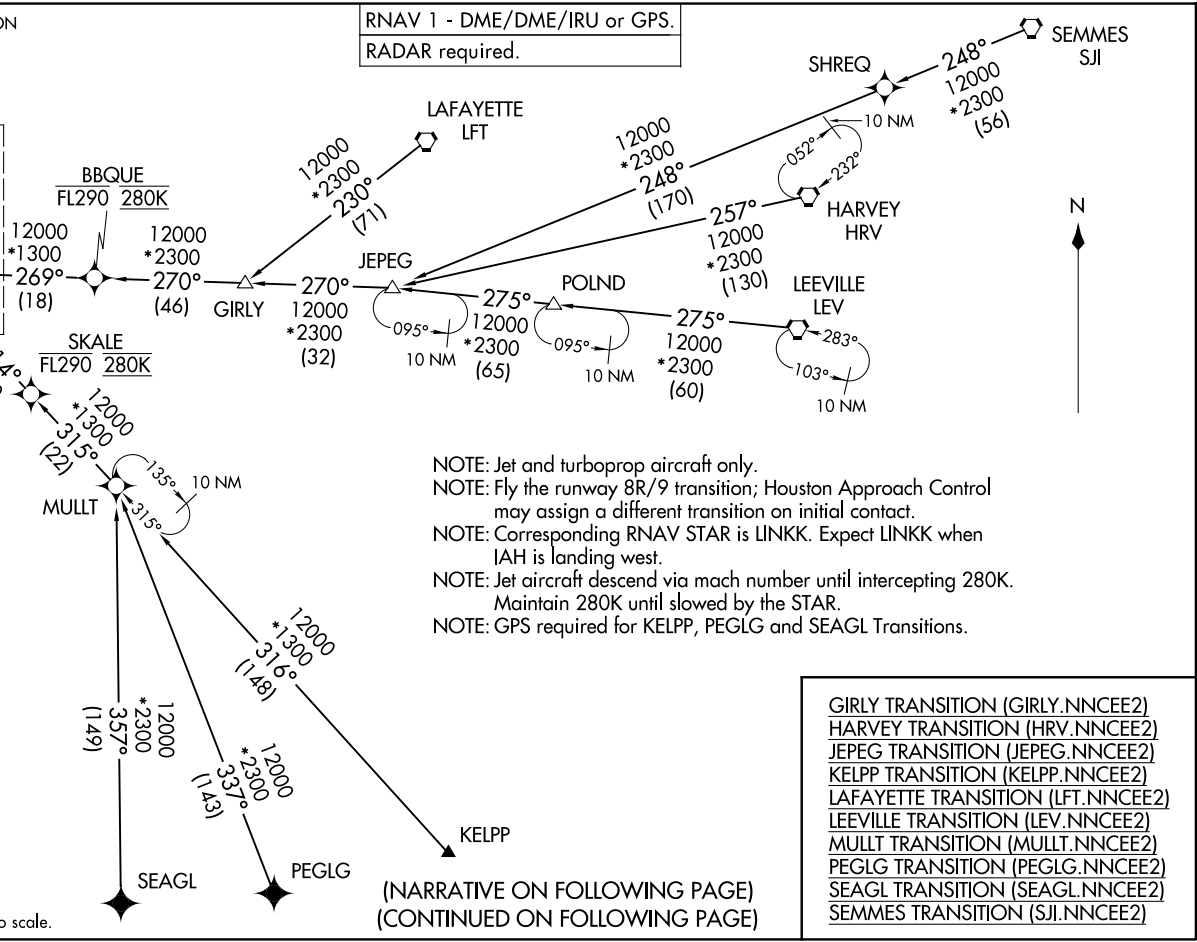
LINKK  
FL290 280K  
12000  
\*1300  
315°  
(22)

LINKK  
FL290 280K  
12000  
\*1300  
315°  
(22)

LINKK  
FL290 280K  
12000  
\*1300  
315°  
(22)

LINKK  
FL290 280K  
12000  
\*1300  
315°  
(22)

NOTE: Chart not to scale.



NOTE: Jet and turboprop aircraft only.  
NOTE: Fly the runway 8R/9 transition; Houston Approach Control may assign a different transition on initial contact.  
NOTE: Corresponding RNAV STAR is LINKK. Expect LINKK when IAH is landing west.  
NOTE: Jet aircraft descend via mach number until intercepting 280K. Maintain 280K until slowed by the STAR.  
NOTE: GPS required for KELPP, PEGLG and SEAGL Transitions.

GIRLY TRANSITION (GIRLY.NNCEE2)  
HARVEY TRANSITION (HRV.NNCEE2)  
JEPEG TRANSITION (JEPEG.NNCEE2)  
KELPP TRANSITION (KELPP.NNCEE2)  
LAFAYETTE TRANSITION (LFT.NNCEE2)  
LEEVILLE TRANSITION (LEV.NNCEE2)  
MULLT TRANSITION (MULLT.NNCEE2)  
PEGLG TRANSITION (PEGLG.NNCEE2)  
SEAGL TRANSITION (SEAGL.NNCEE2)  
SEMMES TRANSITION (SJI.NNCEE2)

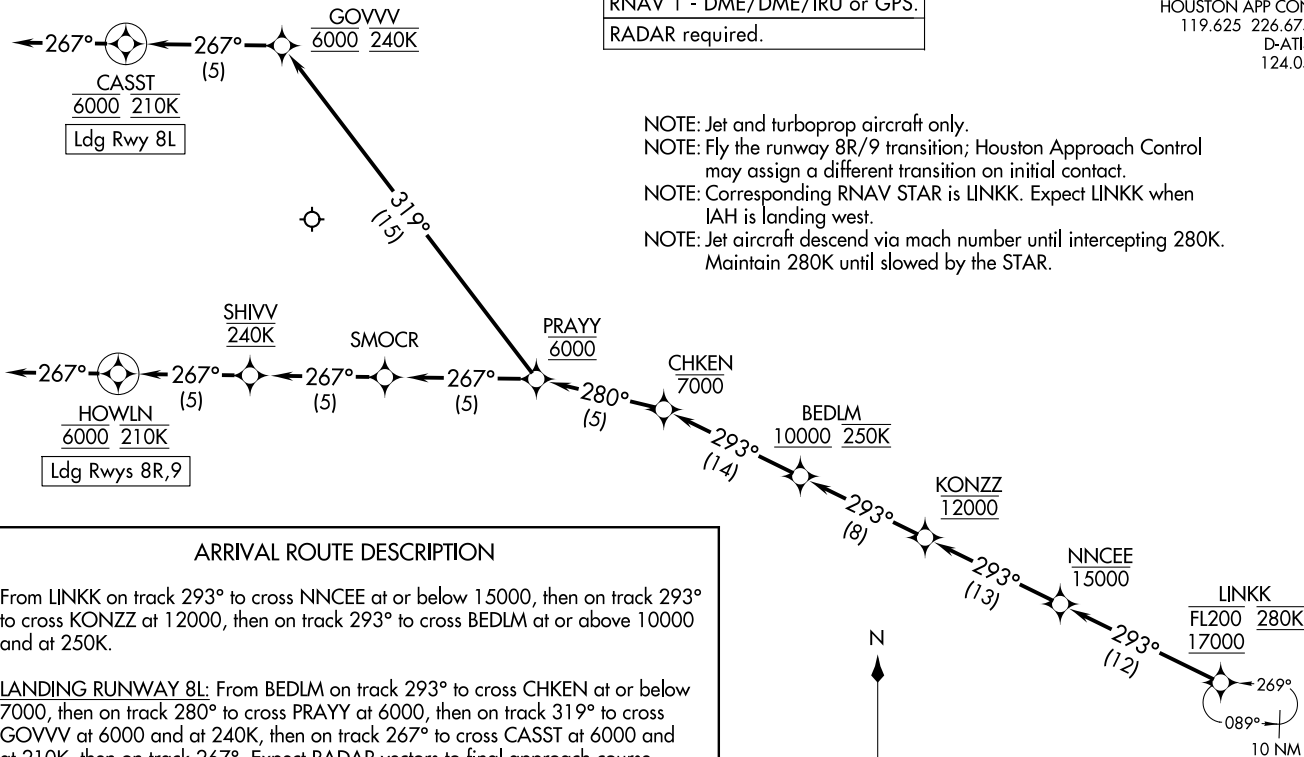
NANCEE TWO ARRIVAL (RNAV) Transition Routes  
(LINKK, NANCEE2) 30NOV23  
HOUSTON, TEXAS  
GEORGE BUSH INTCNL/HOUSTON (IAH)

(LINKK, NANCEE2) 23334  
NANCEE TWO ARRIVAL (RNAV) Transition Routes  
AL-5461 (FAA)  
GEORGE BUSH INTCNL/HOUSTON (IAH)  
HOUSTON, TEXAS

RNAV 1 - DME/DME/IRU or GPS.  
RADAR required.

HOUSTON APP CON  
119.625 226.675  
D-ATIS  
124.05

- NOTE: Jet and turboprop aircraft only.
- NOTE: Fly the runway 8R/9 transition; Houston Approach Control may assign a different transition on initial contact.
- NOTE: Corresponding RNAV STAR is LINKK. Expect LINKK when IAH is landing west.
- NOTE: Jet aircraft descend via mach number until intercepting 280K. Maintain 280K until slowed by the STAR.

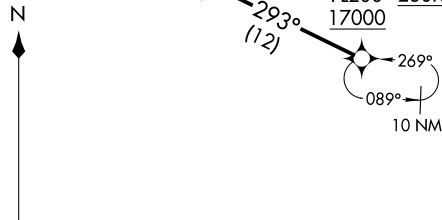


ARRIVAL ROUTE DESCRIPTION

From LINKK on track 293° to cross NNCEE at or below 15000, then on track 293° to cross KONZZ at 12000, then on track 293° to cross BEDLM at or above 10000 and at 250K.

**LANDING RUNWAY 8L:** From BEDLM on track 293° to cross CHKEN at or below 7000, then on track 280° to cross PRAYY at 6000, then on track 319° to cross GOVV at 6000 and at 240K, then on track 267° to cross CASST at 6000 and at 210K, then on track 267°. Expect RADAR vectors to final approach course.

**LANDING RUNWAYS 8R, 9:** From BEDLM on track 293° to cross CHKEN at or below 7000, then on track 280° to cross PRAYY at 6000, then on track 267° to cross SMOCR, then on track 267° to cross SHIVV at 240K, then on track 267° to cross HOWLN at 6000 and at 210K, then on track 267°. Expect RADAR vectors to final approach course.



NOTE: Chart not to scale.

LNKKN>NNCEE2) 23334  
30NOV23

ANNCEE TWO ARRIVAL (RNAV) Arrival Routes

HOUSTON, TEXAS  
GEORGE BUSH INTCONTL/HOUSTON (IAH)

(LINKK>NNCEE2) 23334  
ANNCEE TWO ARRIVAL (RNAV) Arrival Routes

AL-5461 (FAA)  
GEORGE BUSH INTCONTL/HOUSTON (IAH)  
HOUSTON, TEXAS