

PITZZ FIVE DEPARTURE (RNAV)
(PITZZ5, PITZZ) 11 JUL 24

HOUSTON, TEXAS
GEORGE BUSH INTCONTL/HOUSTON (IAH)

HOUSTON DEP CON 126.675 339.8
D-ATIS 124.05
CLNC DEL 128.1
CPDLC
GND CON
118.575 (Rwys 8L/R, 26L/R, 9/27)
121.7 (Rwys 15L/R, 33L/R)
HOUSTON TOWER
120.725 290.2 (Rwys 8L/26R)
125.35 290.2 (Rwys 8R/26L)
127.3 288.25 (Rwys 15L/R, 33L/R)
135.15 290.2 (Rwys 9/27)

RNAV 1 - DME/DME/IRU or GPS required.
RADAR required.
RADAR required for non - GPS equipped aircraft.

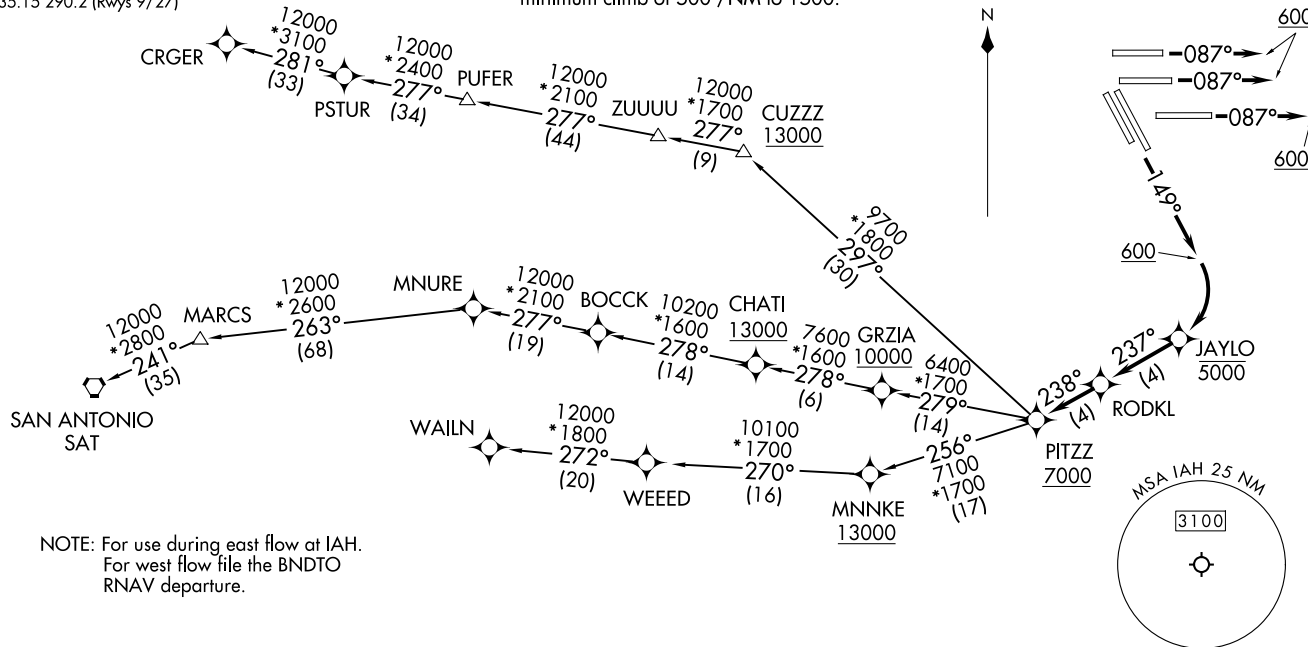
**TOP ALTITUDE:
16000**

(PITZZ5, PITZZ) 25051
PITZZ FIVE DEPARTURE (RNAV)

AL-5461 (FAA)
GEORGE BUSH INTCONTL/HOUSTON (IAH)
HOUSTON, TEXAS

TAKEOFF MINIMUMS

Rwys 8L/R, 9, 15L/R: Standard with minimum climb of 500'/NM to 1500.



NOTE: For use during east flow at IAH.
For west flow file the BNDTO
RNAV departure.

(CONTINUED ON FOLLOWING PAGE)

NOTE: Chart not to scale.



DEPARTURE ROUTE DESCRIPTION

TAKEOFF RUNWAYS 8L/R, 9: Climb heading 087° to 600, expect RADAR vectors to RODKL, thence. . . .

TAKEOFF RUNWAYS 15L/R: Climb heading 149° to 600, then right turn direct to cross JAYLO at or below 5000, then on track 237° to RODKL, thence. . . .

. . . .on track 238° to cross PITZZ at or above 7000, then on (transition).
Maintain 16000. Expect filed altitude 10 minutes after departure.

CRGER TRANSITION (PITZZ5.CRGER)

MNURE TRANSITION (PITZZ5.MNURE)

SAN ANTONIO TRANSITION (PITZZ5.SAT)

WALIN TRANSITION (PITZZ5.WALIN)

SC-5, 20 MAR 2025 to 17 APR 2025

SC-5, 20 MAR 2025 to 17 APR 2025