

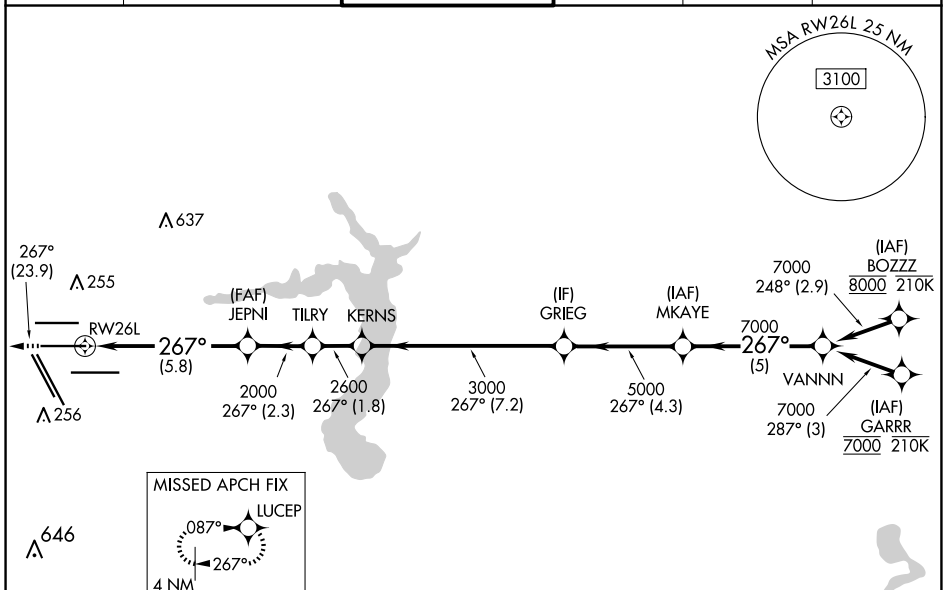
APP CRS	Rwy Idg	<b>9402</b>
<b>267°</b>	TDZE	<b>95</b>
	Apt Elev	<b>96</b>

# RNAV (RNP) Y RWY 26L

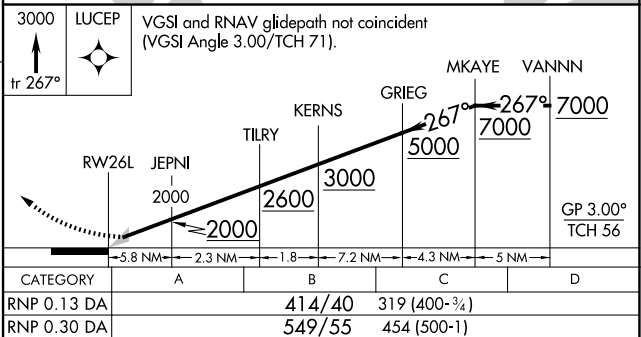
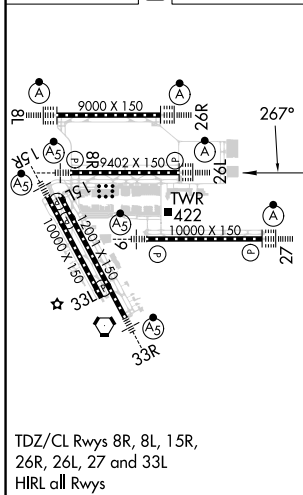
GEORGE BUSH INTCNL/HOUSTON (IAH)

RNP AR APCH - GPS.		ALSF-2 	MISSED APPROACH: Climb to 3000 on track 267° to LUCEP and hold.
For uncompensated Baro-VNAV systems, procedure NA below -3°C or above 54°C. Simultaneous approach authorized. For inop ALS, increase RNP 0.13 all Cats visibility to RVR 5100, and RNP 0.30 all Cats visibility to 1½ SM.			

D-ATIS	HOUSTON APP CON	HOUSTON TOWER	GND CON	CLNC DEL	CPDLC
<b>124.05</b>	<b>120.05 379.1 EAST</b> <b>124.35 316.15 WEST</b>	<b>125.35 290.2</b>	<b>118.575</b>	<b>128.1</b>	



ELEV	96	<b>D</b>	TDZE	95
------	----	----------	------	----



CATEGORY	A	B	C	D
RNP 0.13 DA		414/40	319 (400-¾)	
RNP 0.30 DA		549/55	454 (500-1)	

**AUTHORIZATION REQUIRED**

SC-5, 20 MAR 2025 to 17 APR 2025

SC-5, 20 MAR 2025 to 17 APR 2025