


APP CRS	Rwy Idg	10000
087°	TDZE	91
	Apt Elev	96

RNAV (RNP) Y RWY 9

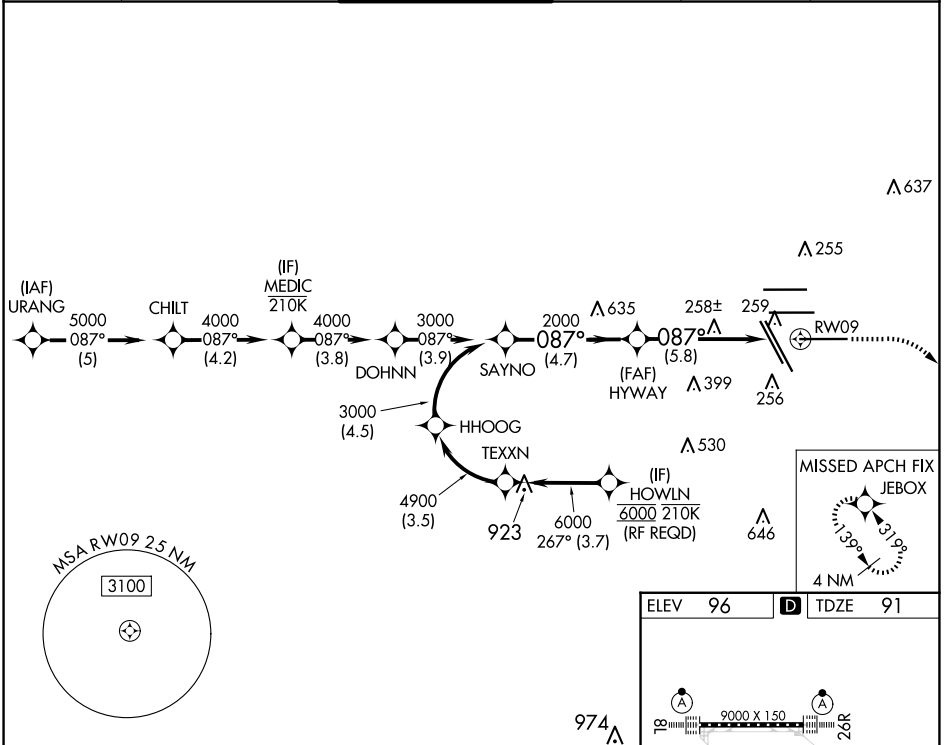
GEORGE BUSH INTCNL/HOUSTON (IAH)

▽ For uncompensated Baro-VNAV systems, procedure NA below -3°C (27°F) or above 54°C (130°F). GPS required. For inop MALS, increase all Cats visibility to 1 $\frac{3}{8}$ mile. Simultaneous approach authorized. Use of FD or AP providing RNAV track guidance required during simultaneous operations.

MALS 

MISSED APPROACH: Climb to 580 then climbing right turn to 3000 direct JEBOX and hold.

D-ATIS	HOUSTON APP CON	HOUSTON TOWER	GND CON	CLNC DEL	CPDLC
124.05	120.05 379.1 EAST 124.35 316.15 WEST	135.15 290.2	118.575	128.1	



SC-5, 20 MAR 2025 to 17 APR 2025

SC-5, 20 MAR 2025 to 17 APR 2025

ELEV 96	D TDZE 91
---------	------------------

VGSI and RNAV glidepath not coincident (VGSI Angle 3.00/TCH 71).

580 3000 JEBOX

SAYNO 3000 087° 2000 HYWAY 2000 RWY09

GP 3.00° TCH 50

4.7 NM 5.8 NM

CATEGORY	A	B	C	D
RNP 0.30 DA		51.6/49	425 (500-1)	

AUTHORIZATION REQUIRED

974 Δ

TDZ/CL Rwwys 8R, 8L, 15R, 26R, 26L, 27 and 33L
HIRL all Rwwys