

WAAS CH 49226 W26D	APP CRS 267°	Rwy Idg TDZE 95 Apt Elev 96	9402
--	------------------------	---	-------------

RNAV (GPS) Z RWY 26L

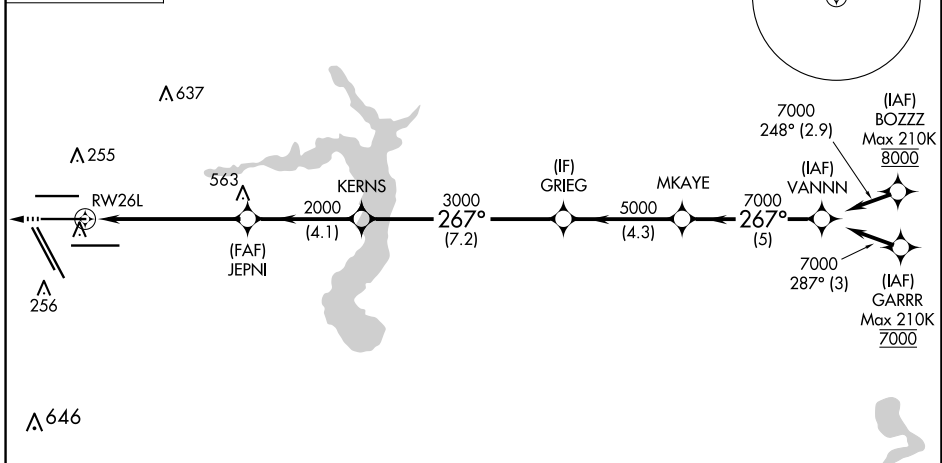
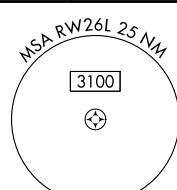
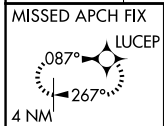
GEORGE BUSH INTCNL/HOUSTON (IAH)

▼ For uncompensated Baro-VNAV systems, LNAV/VNAV NA below -3°C (27°F) or above 54°C (130°F). For inop ALSF, increase LPV Cat E visibility to RVR 4000, LNAV/VNAV Cat E visibility to 1½, and LNAV Cat E visibility to 1¾. DME/DME RNP-0.3 NA. Simultaneous approach authorized with Rwy 26R and Rwy 27. LNAV procedure NA during simultaneous operations. Use of FD or AP providing RNAV track guidance required during simultaneous operations.

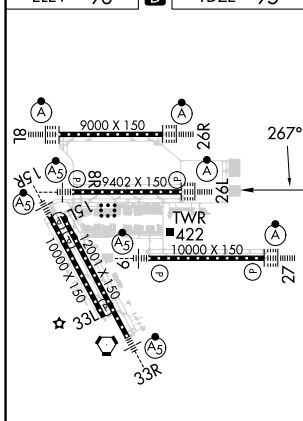
ALSF-2

MISSED APPROACH: Climb to 3000 direct LUCEP and hold.

D-ATIS 124.05	HOUSTON APP CON 120.05 379.1 EAST 124.35 316.15 WEST	HOUSTON TOWER 125.35 290.2	GND CON 118.575	CLNC DEL 128.1	CPDLC
-------------------------	--	--------------------------------------	---------------------------	--------------------------	-------

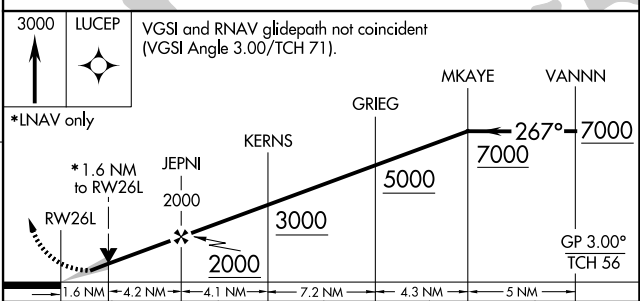


ELEV 96	D	TDZE 95
----------------	----------	----------------



TDZ/CL Rwy 8R, 8L, 15R, 26R, 26L, 27 and 33L
HIRL all Rwy

RADAR REQUIRED



3000 LUCEP	VGSi and RNAV glidepath not coincident (VGSi Angle 3.00/TCH 71).				
*LNAV only	*1.6 NM to RW26L				
2000	2000	3000	5000	7000	7000
1.6 NM	4.2 NM	4.1 NM	7.2 NM	4.3 NM	5 NM
CATEGORY	A	B	C	D	E
LPV DA	295/18		200 (200-½)		
LNAV/VNAV DA	586/60		491 (500-1¼)		
LNAV MDA	680/24	585 (600-½)	680-1¼	585 (600-1¼)	

SC-5, 20 MAR 2025 to 17 APR 2025

SC-5, 20 MAR 2025 to 17 APR 2025